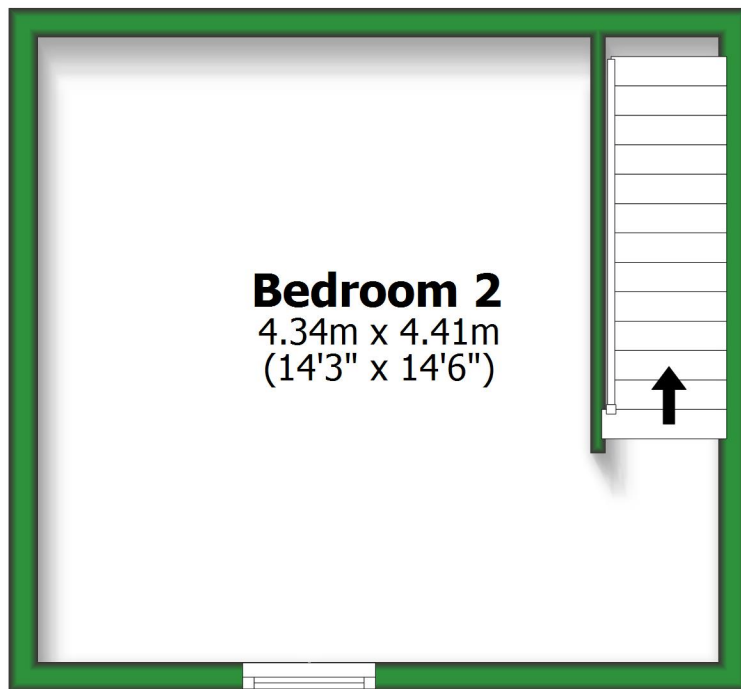


## Basement

Approx. 20.5 sq. metres (221.0 sq. feet)

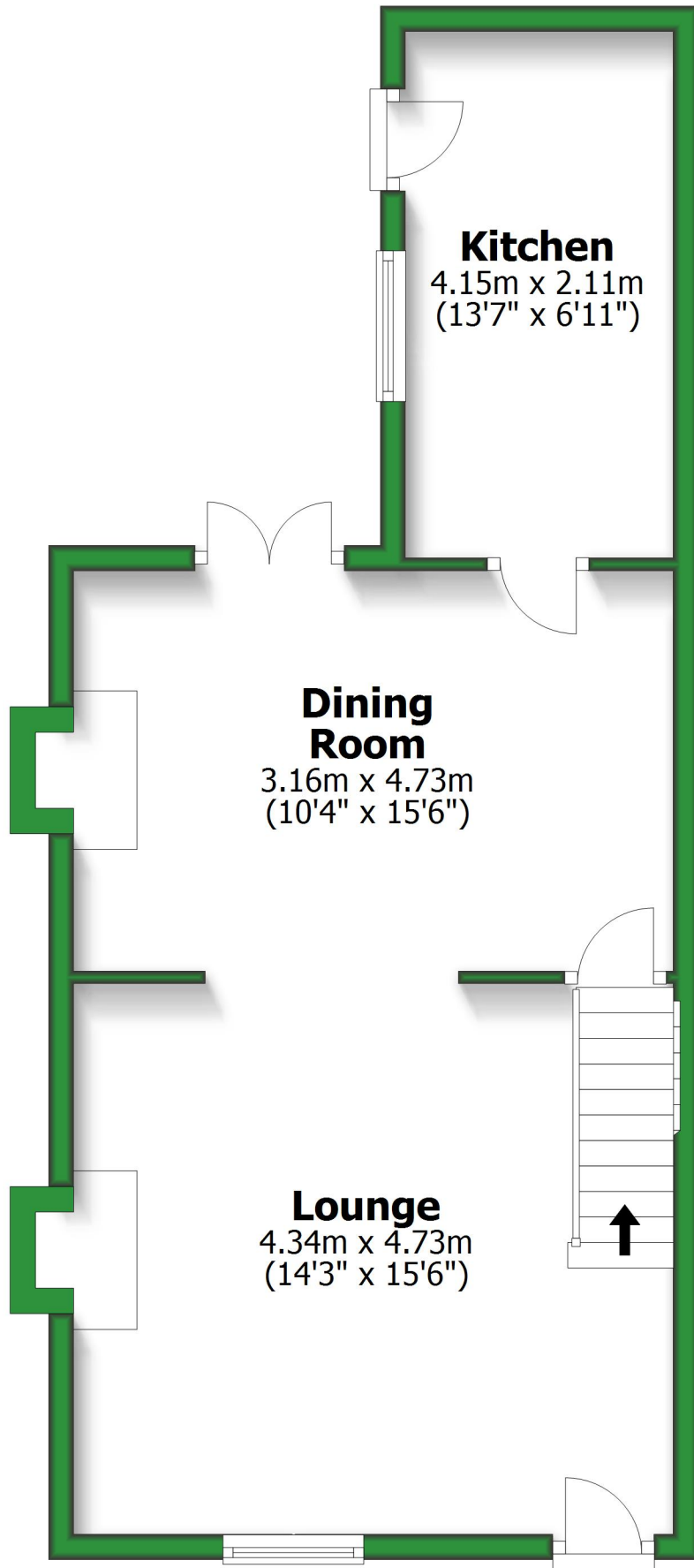


Total area: approx. 101.6 sq. metres (1093.1 sq. feet)

For illustrative purposes only. Not to scale. All sizes are approximate.  
Plan produced using PlanUp.

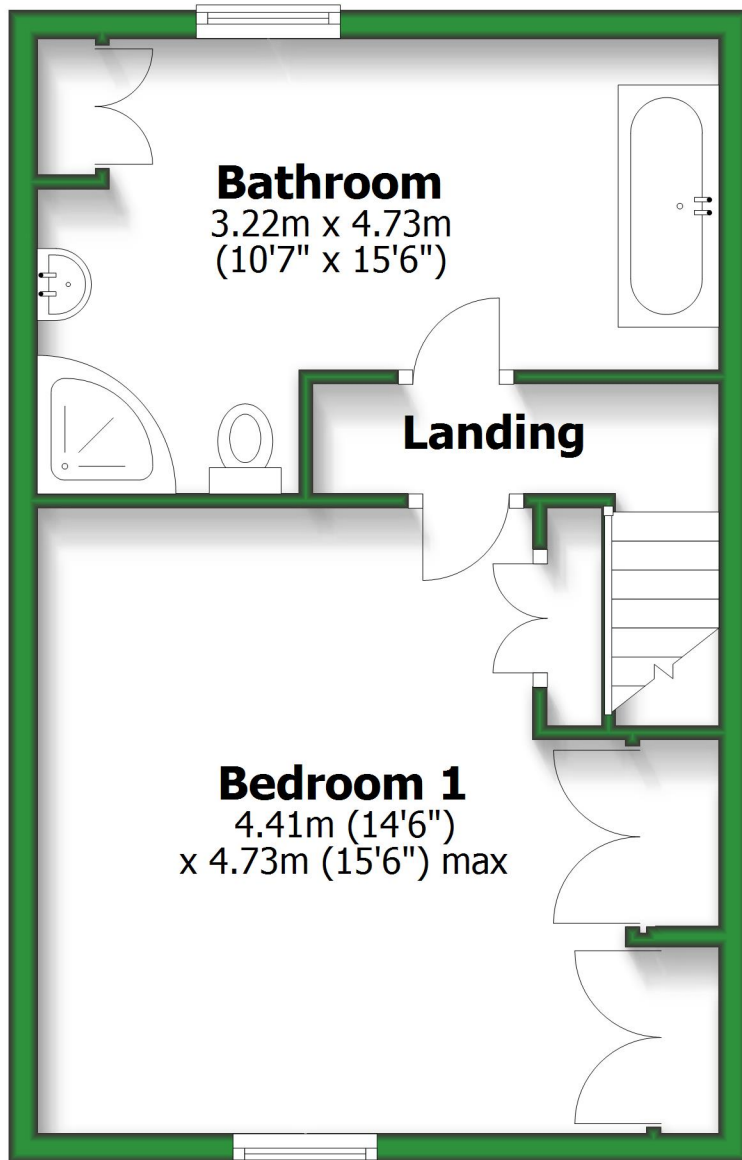
# Ground Floor

Approx. 44.9 sq. metres (483.5 sq. feet)



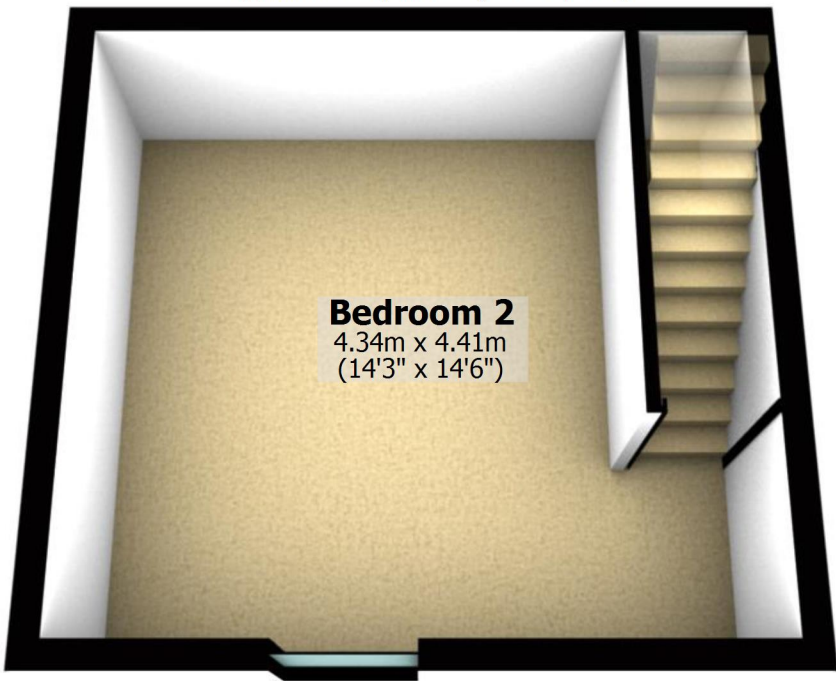
## First Floor

Approx. 36.1 sq. metres (388.7 sq. feet)



## Basement

Approx. 20.5 sq. metres (221.0 sq. feet)



### Bedroom 2

4.34m x 4.41m  
(14'3" x 14'6")

Total area: approx. 101.6 sq. metres (1093.1 sq. feet)

For illustrative purposes only. Not to scale. All sizes are approximate.

Plan produced using PlanUp.

# Ground Floor

Approx. 44.9 sq. metres (483.5 sq. feet)

## Kitchen

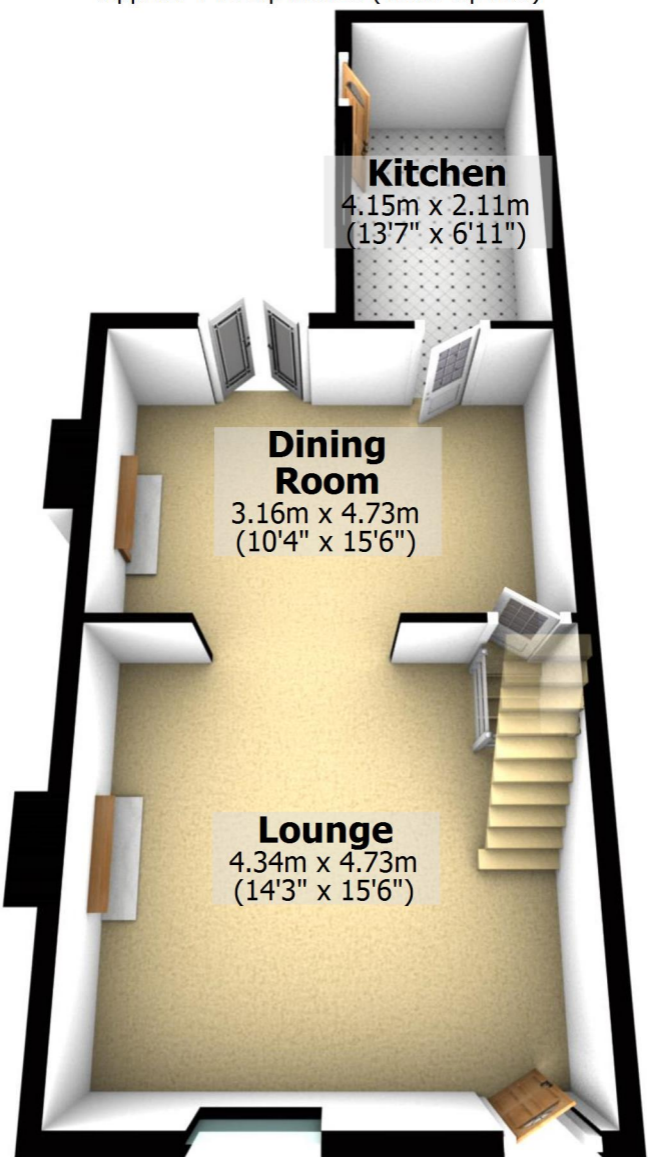
4.15m x 2.11m  
(13'7" x 6'11")

## Dining Room

3.16m x 4.73m  
(10'4" x 15'6")

## Lounge

4.34m x 4.73m  
(14'3" x 15'6")



## First Floor

Approx. 36.1 sq. metres (388.7 sq. feet)

