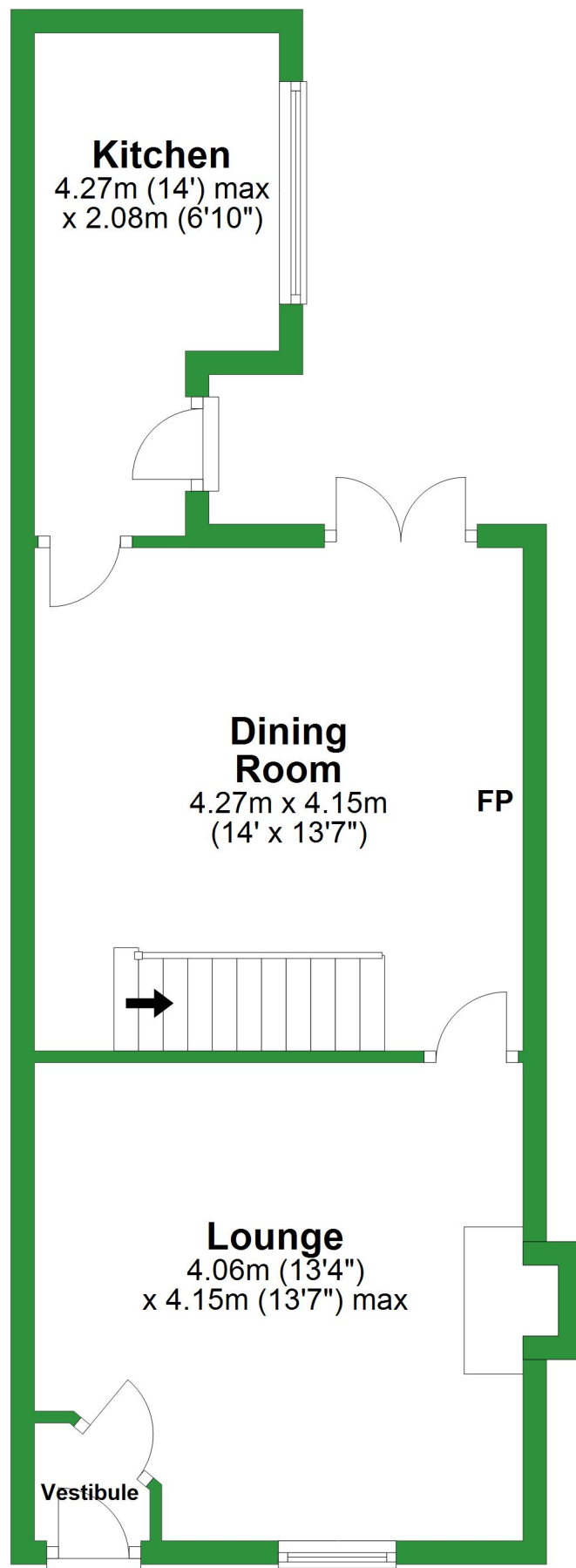


# Ground Floor

Approx. 42.7 sq. metres (460.0 sq. feet)

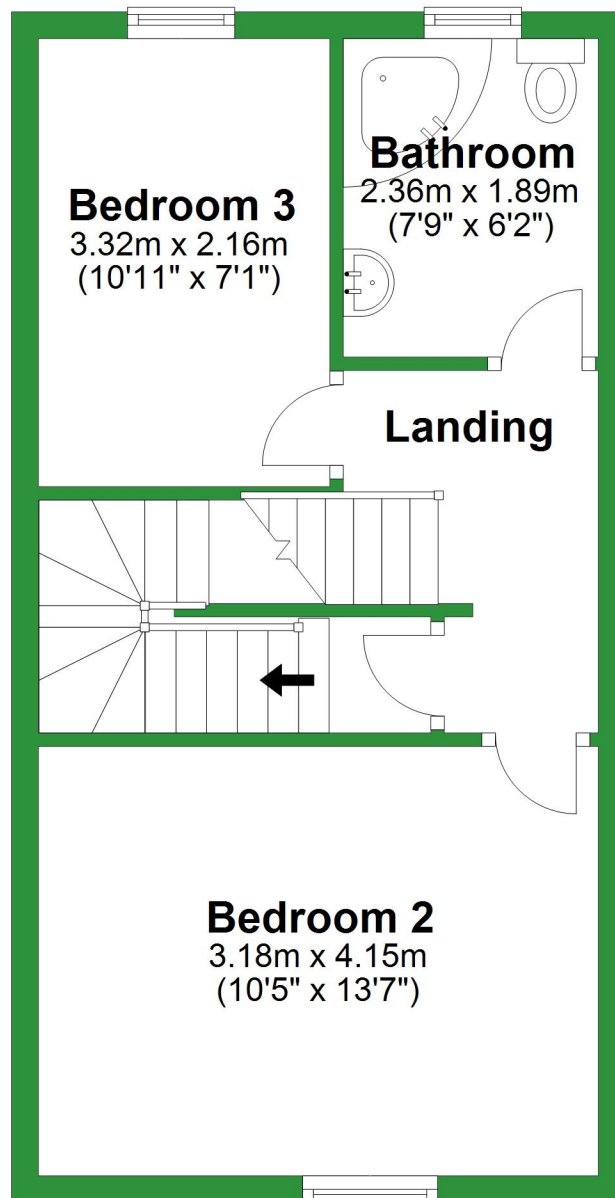


Total area: approx. 101.2 sq. metres (1088.9 sq. feet)

For illustrative purposes only. Not to scale. All sizes are approximate.  
Plan produced using PlanUp.

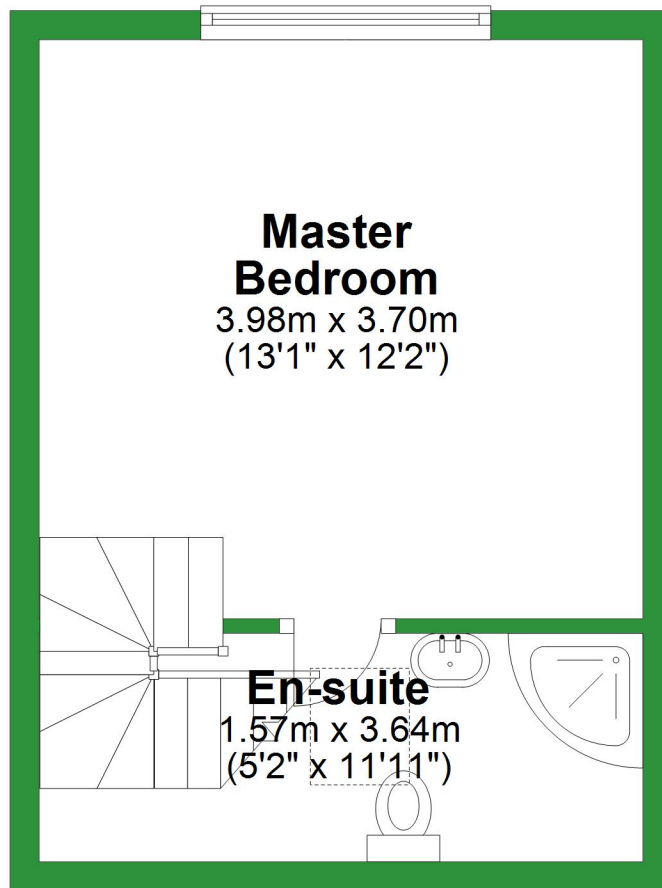
## First Floor

Approx. 35.0 sq. metres (376.5 sq. feet)



## Second Floor

Approx. 23.4 sq. metres (252.4 sq. feet)



# Ground Floor

Approx. 42.7 sq. metres (460.0 sq. feet)

## Kitchen

4.27m (14') max  
x 2.08m (6'10")

## Dining Room

4.27m x 4.15m  
(14' x 13'7")

## Lounge

4.06m (13'4")  
x 4.15m (13'7") max

Vestibule

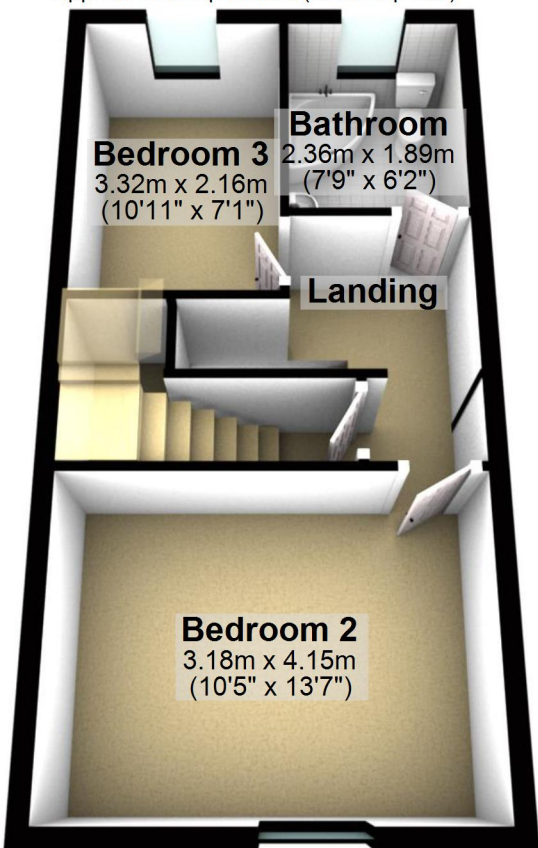
Total area: approx. 101.2 sq. metres (1088.9 sq. feet)

For illustrative purposes only. Not to scale. All sizes are approximate.

Plan produced using PlanUp.

## First Floor

Approx. 35.0 sq. metres (376.5 sq. feet)



## Second Floor

Approx. 23.4 sq. metres (252.4 sq. feet)

### Master Bedroom

3.98m x 3.70m  
(13'1" x 12'2")

### En-suite

1.57m x 3.64m  
(5'2" x 11'11")

