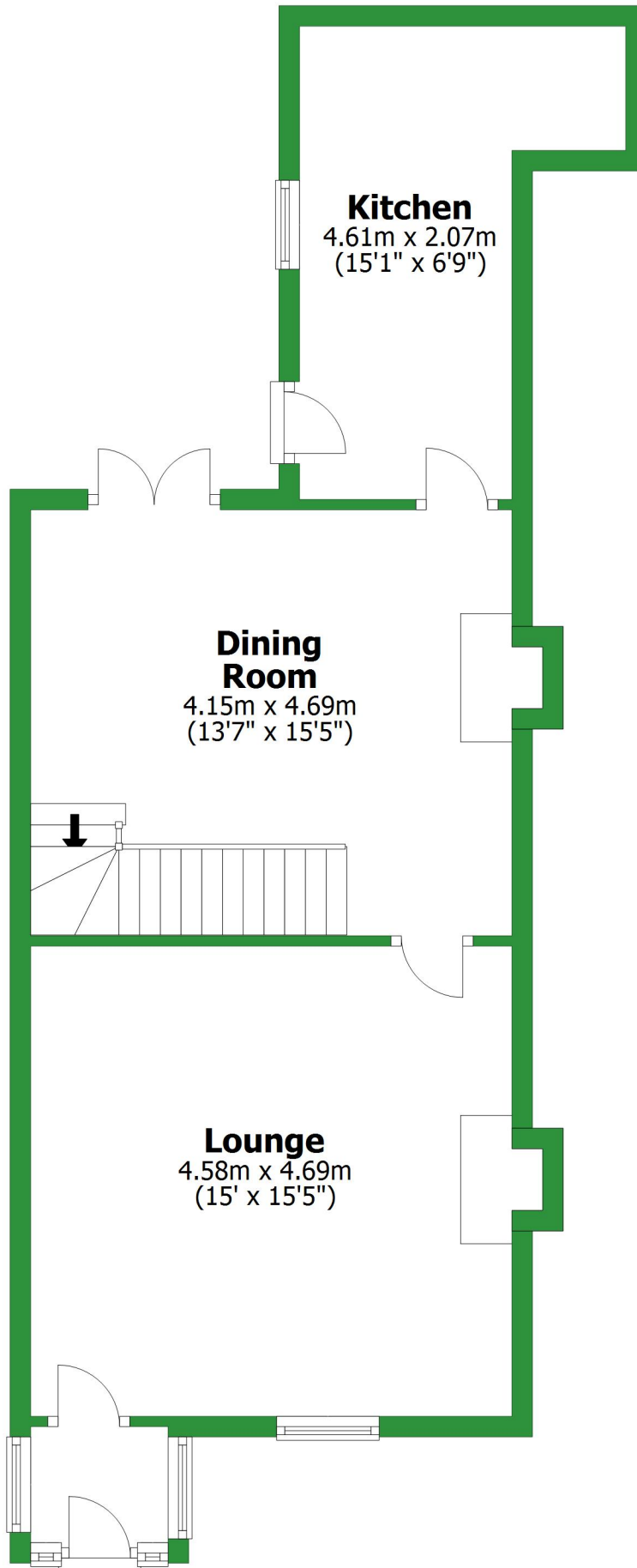


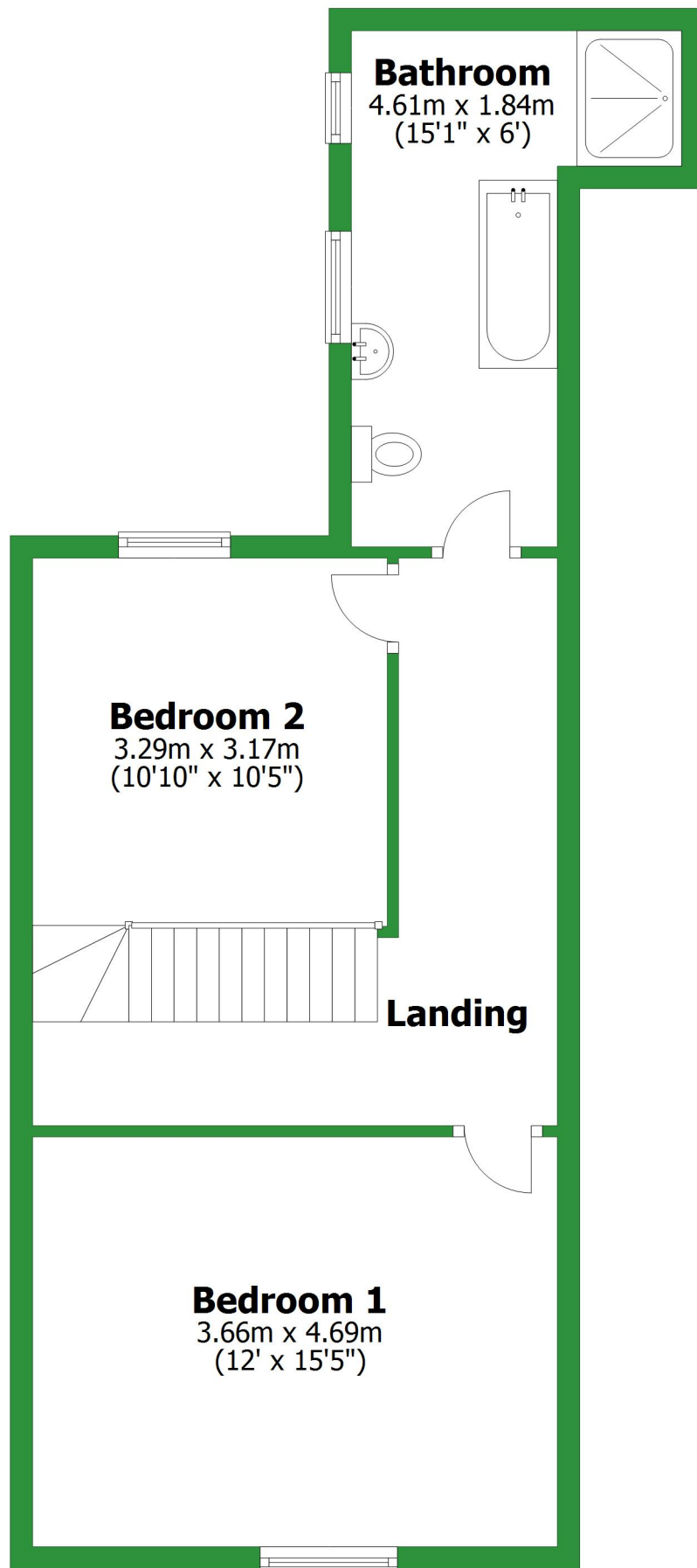
Ground Floor

Approx. 54.2 sq. metres (582.9 sq. feet)



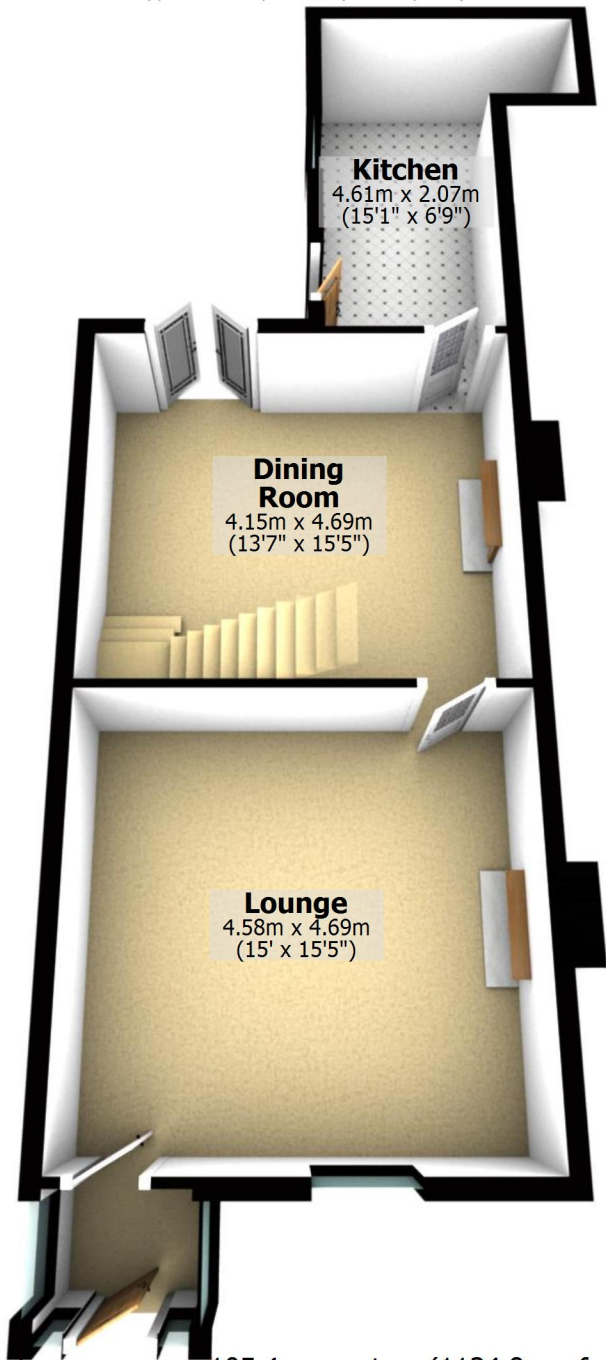
Total area: approx. 105.4 sq. metres (1134.8 sq. feet)

For illustrative purposes only. Not to scale. All sizes are approximate.
Plan produced using PlanUp.



Ground Floor

Approx. 54.2 sq. metres (582.9 sq. feet)



Kitchen

4.61m x 2.07m
(15'1" x 6'9")

Dining Room

4.15m x 4.69m
(13'7" x 15'5")

Lounge

4.58m x 4.69m
(15' x 15'5")

Total area: approx. 105.4 sq. metres (1134.8 sq. feet)

For illustrative purposes only. Not to scale. All sizes are approximate.

Plan produced using PlanUp.

First Floor

Approx. 51.3 sq. metres (551.9 sq. feet)

Bathroom

4.61m x 1.84m
(15'1" x 6')

Bedroom 2

3.29m x 3.17m
(10'10" x 10'5")

Landing

Bedroom 1

3.66m x 4.69m
(12' x 15'5")

