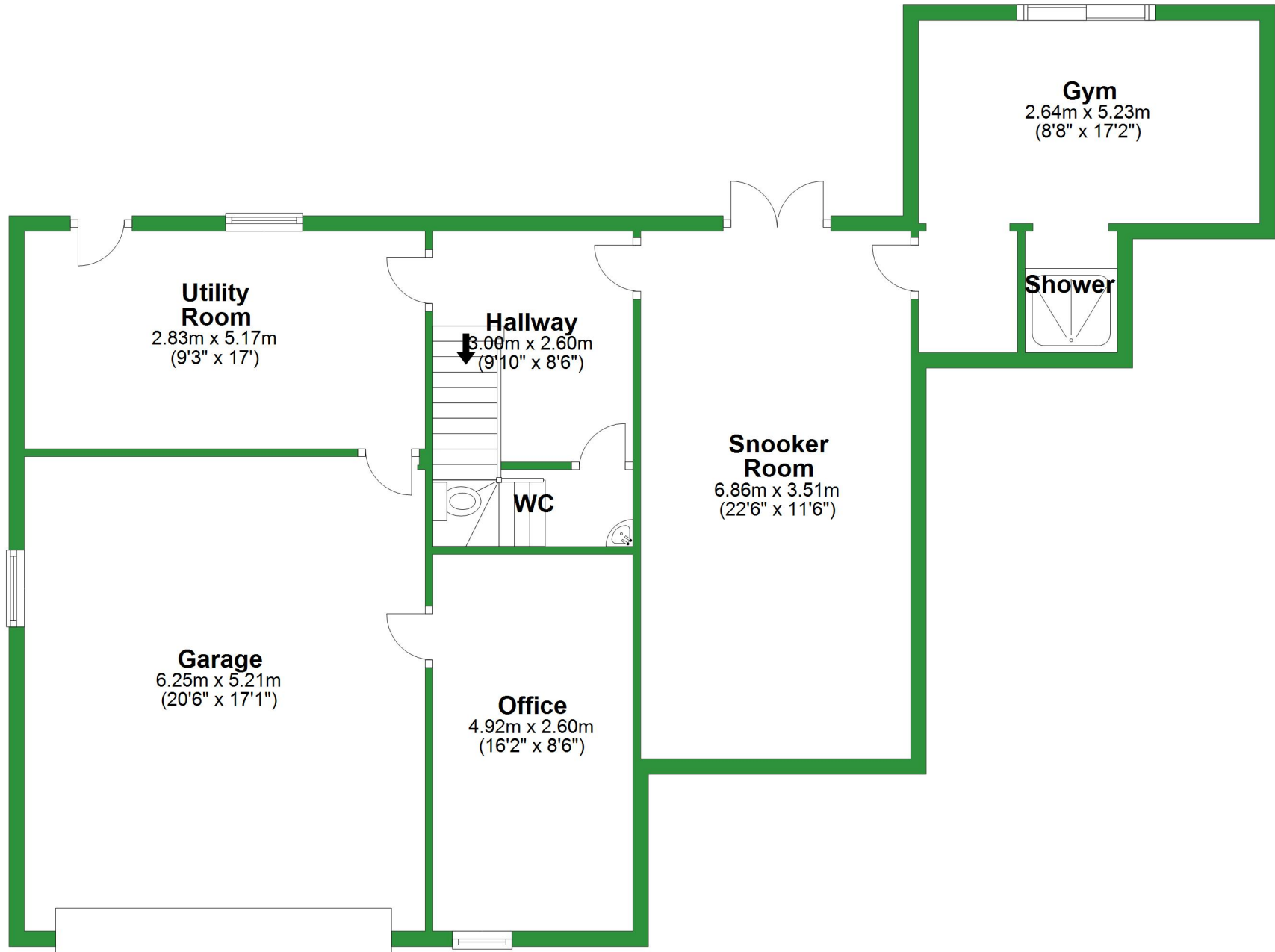


Lower Ground Floor

Approx. 112.9 sq. metres (1215.1 sq. feet)

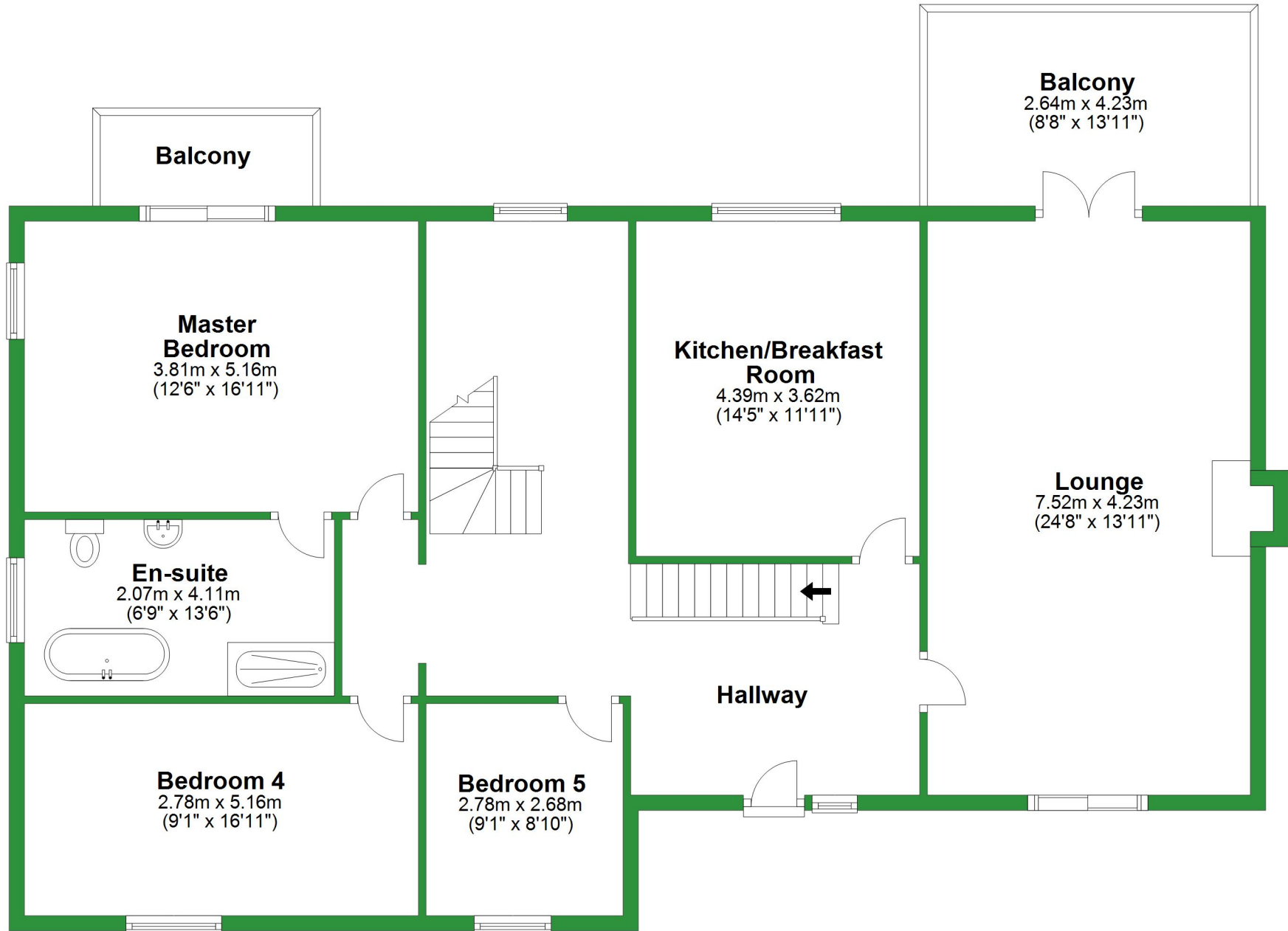


Total area: approx. 341.6 sq. metres (3676.9 sq. feet)

For illustrative purposes only. Not to scale. All sizes are approximate.
Plan produced using PlanUp.

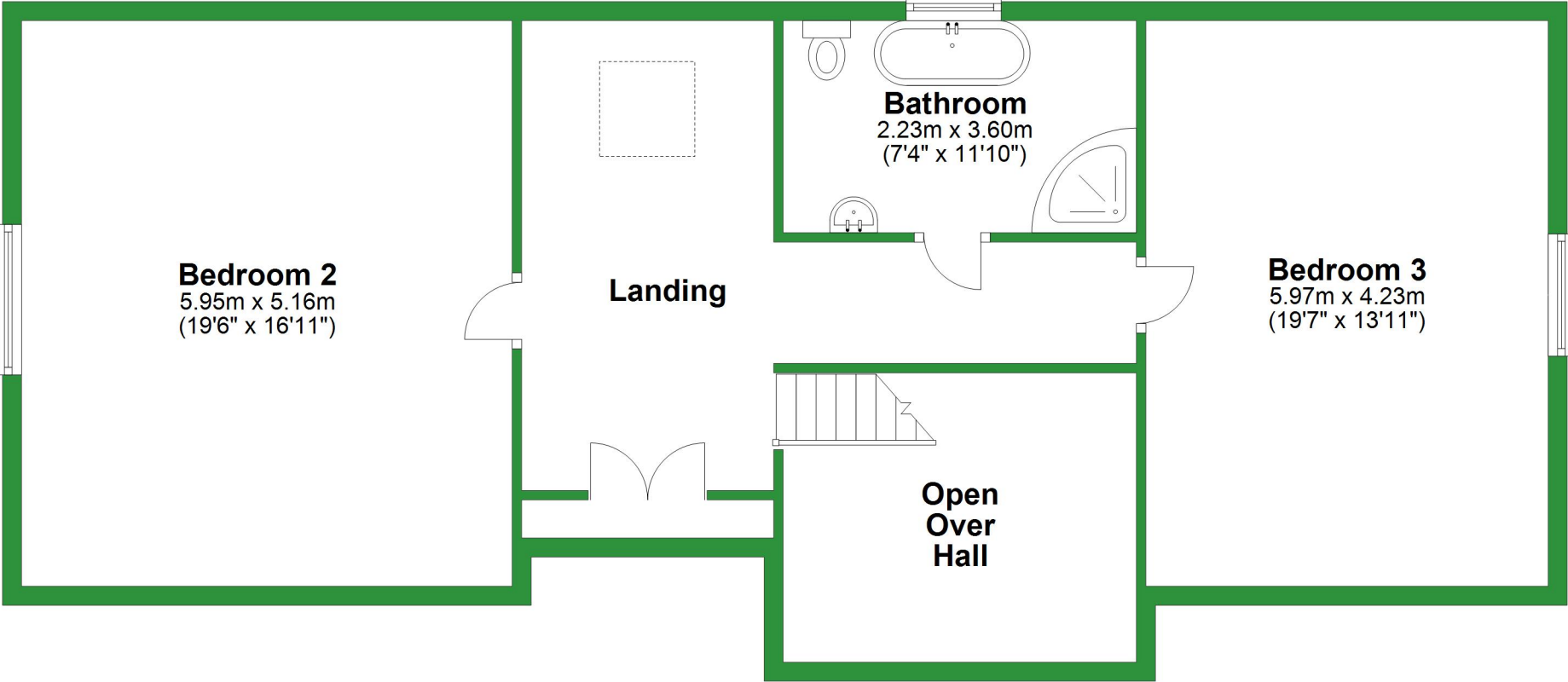
Ground Floor

Approx. 131.8 sq. metres (1419.0 sq. feet)



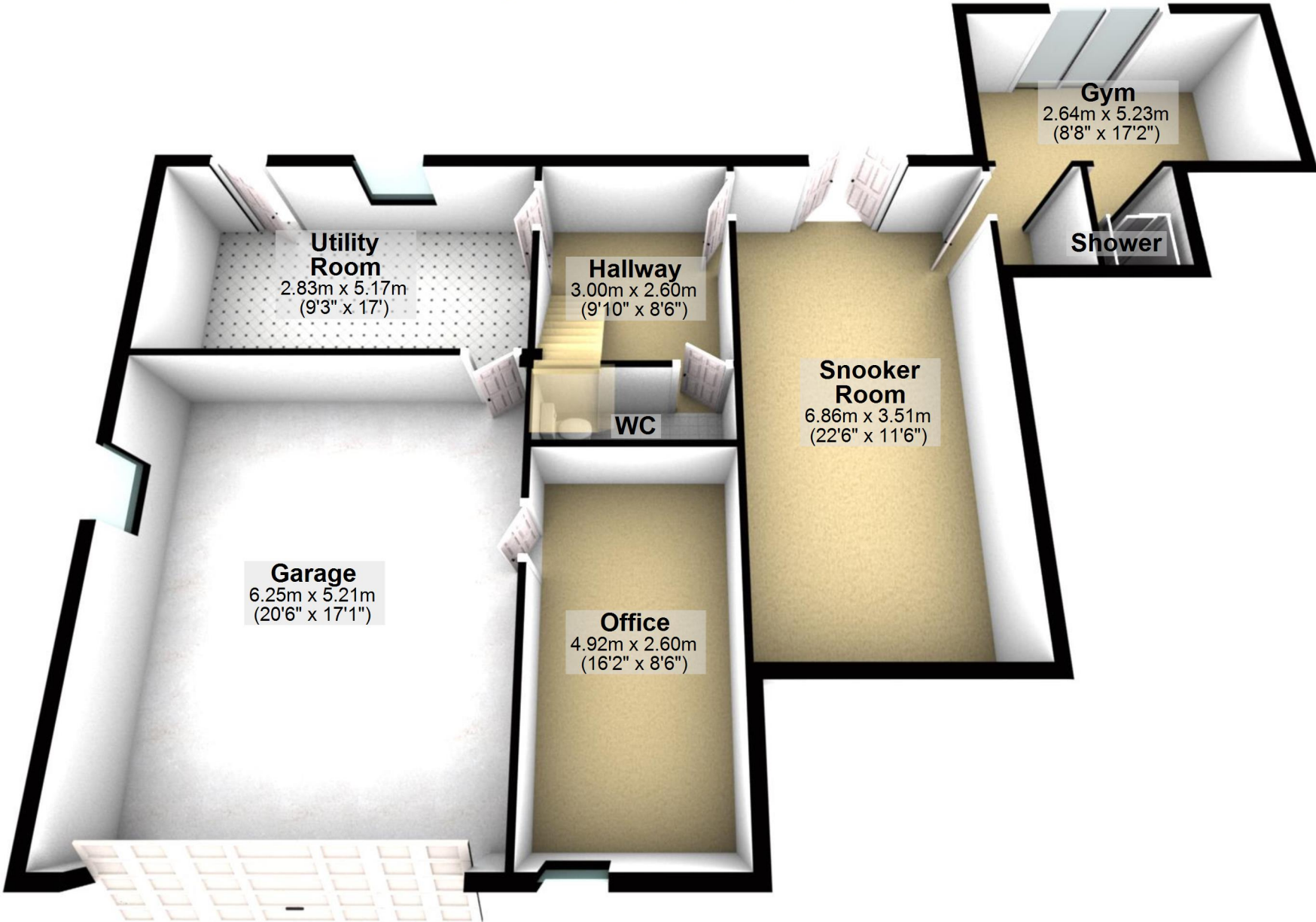
First Floor

Approx. 96.9 sq. metres (1042.7 sq. feet)



Lower Ground Floor

Approx. 112.9 sq. metres (1215.1 sq. feet)

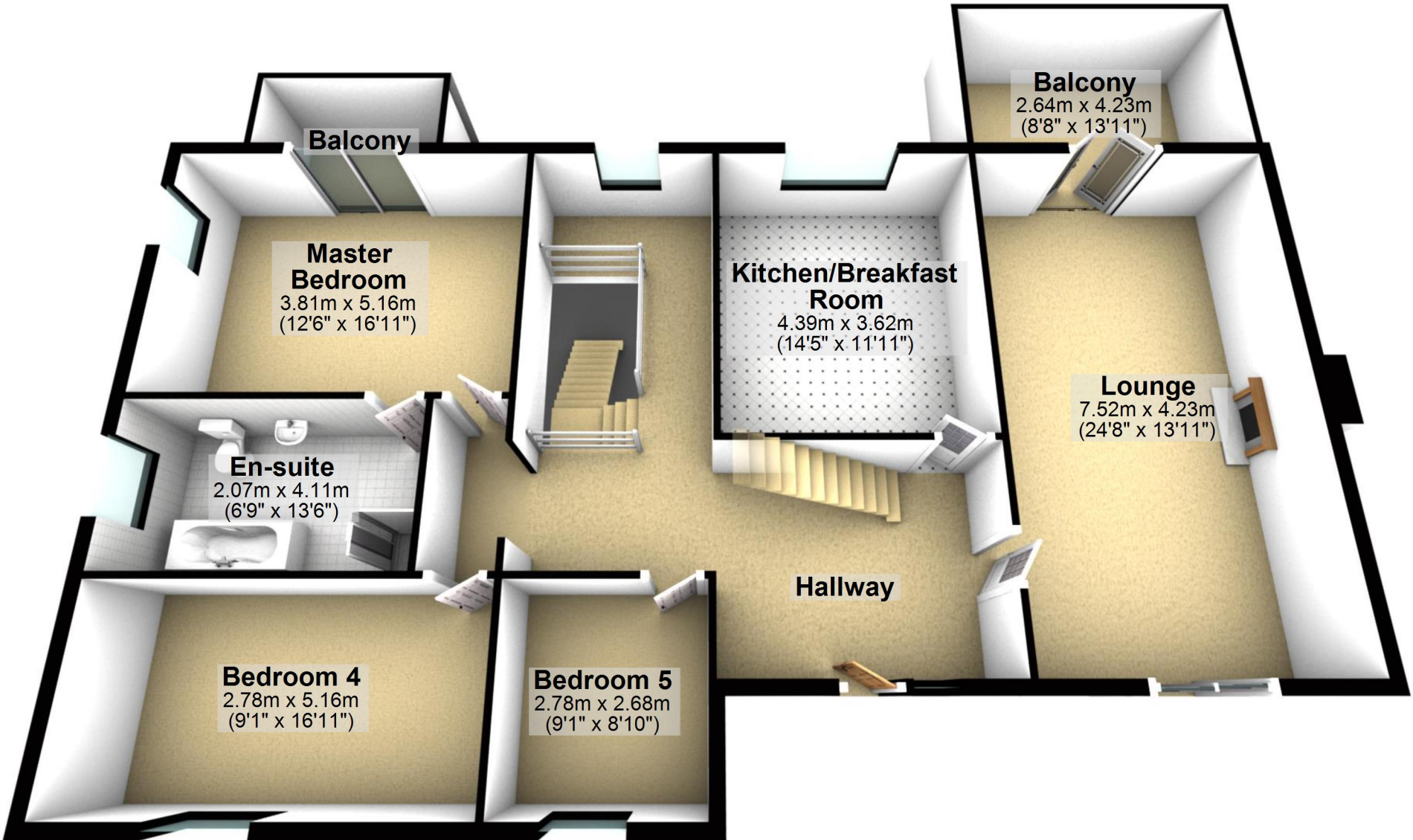


Total area: approx. 341.6 sq. metres (3676.9 sq. feet)

For illustrative purposes only. Not to scale. All sizes are approximate.
Plan produced using PlanUp.

Ground Floor

Approx. 131.8 sq. metres (1419.0 sq. feet)



First Floor

Approx. 96.9 sq. metres (1042.7 sq. feet)

