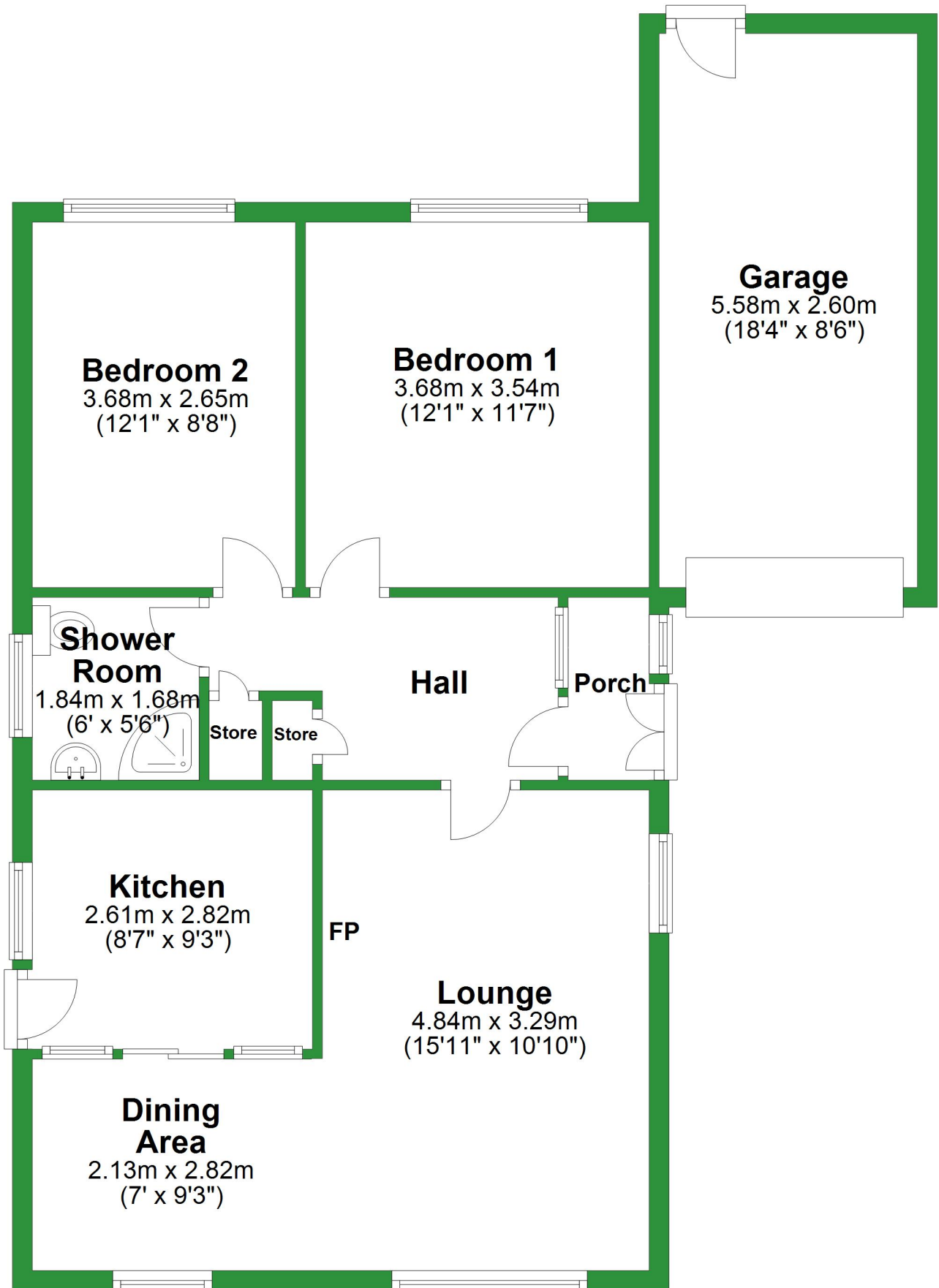


# Ground Floor

Approx. 80.5 sq. metres (866.0 sq. feet)

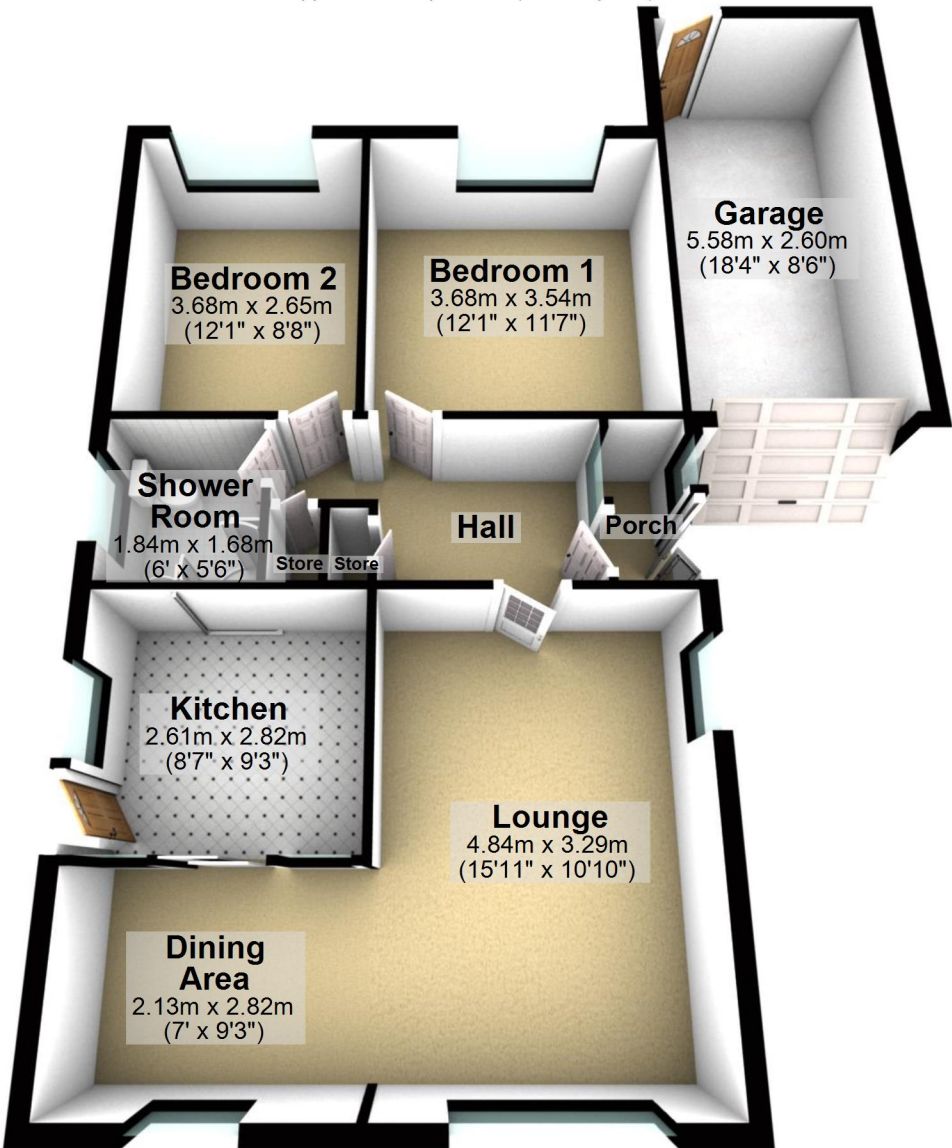


Total area: approx. 80.5 sq. metres (866.0 sq. feet)

For illustrative purposes only. Not to scale. All sizes are approximate.  
Plan produced using PlanUp.

# Ground Floor

Approx. 80.5 sq. metres (866.0 sq. feet)



Total area: approx. 80.5 sq. metres (866.0 sq. feet)

For illustrative purposes only. Not to scale. All sizes are approximate.  
Plan produced using PlanUp.