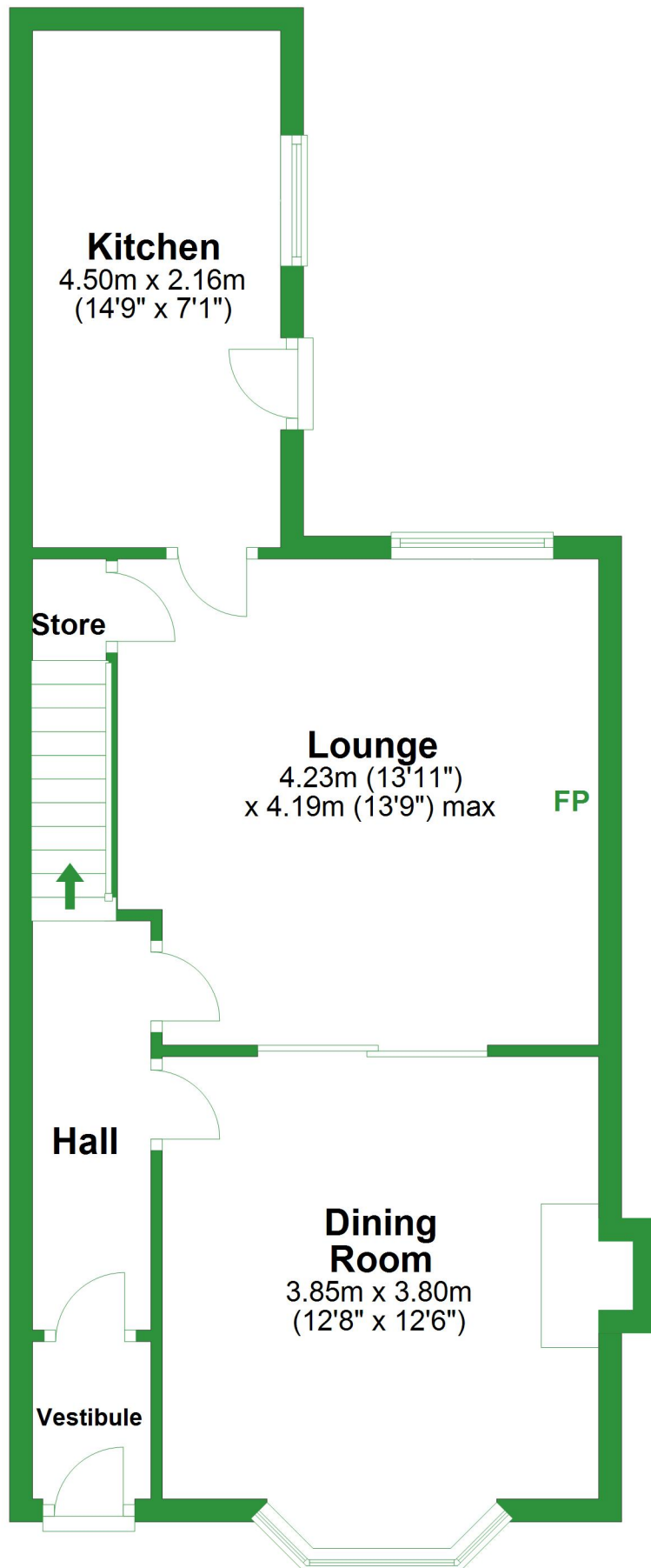


Ground Floor

Approx. 50.5 sq. metres (543.8 sq. feet)

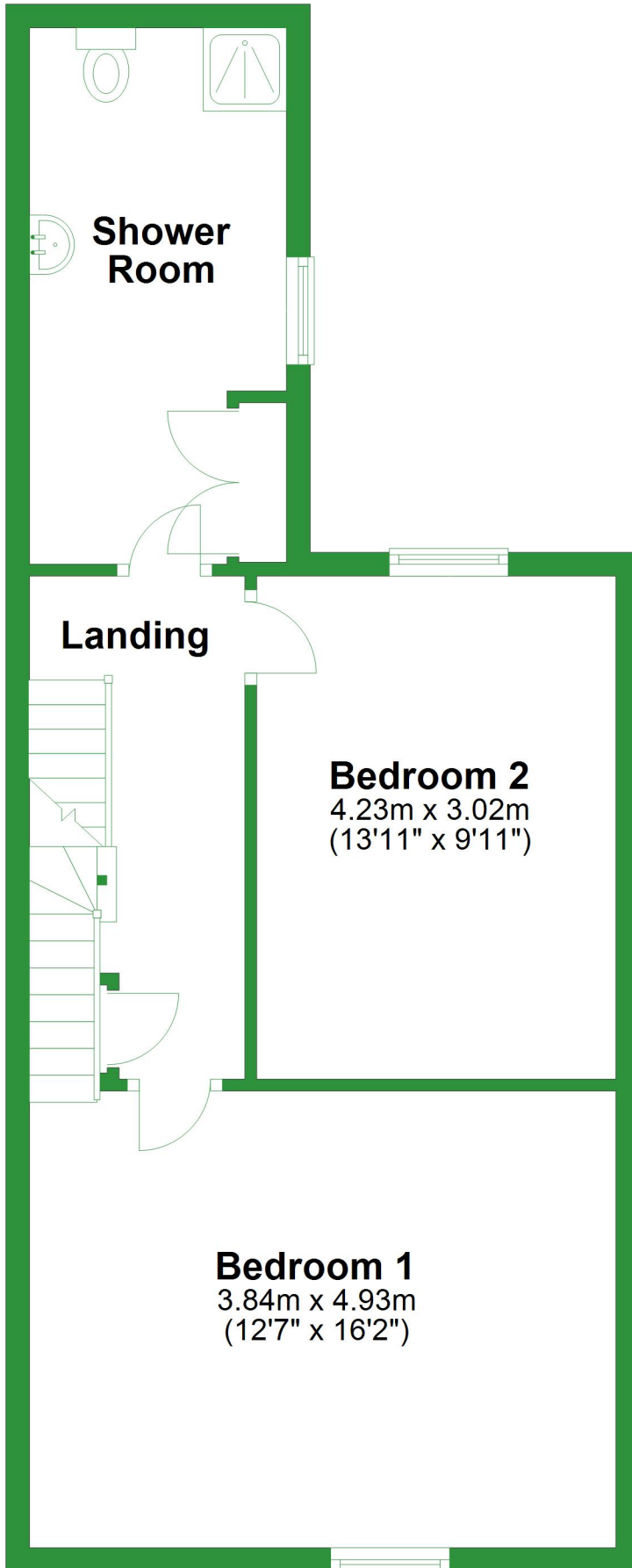


Total area: approx. 126.4 sq. metres (1361.0 sq. feet)

For illustrative purposes only. Not to scale. All sizes are approximate.
Plan produced using PlanUp.

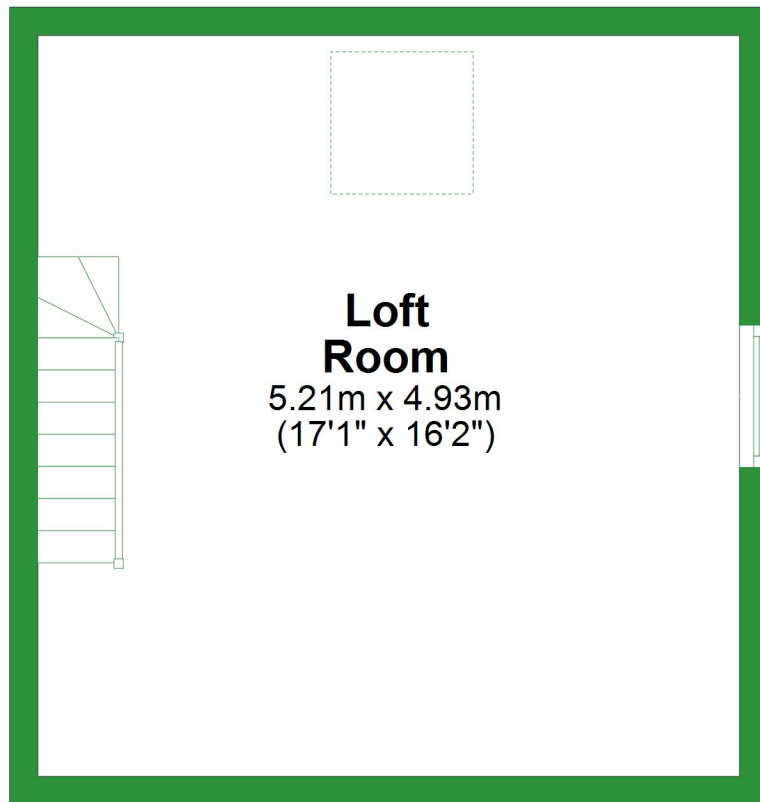
First Floor

Approx. 50.2 sq. metres (540.7 sq. feet)



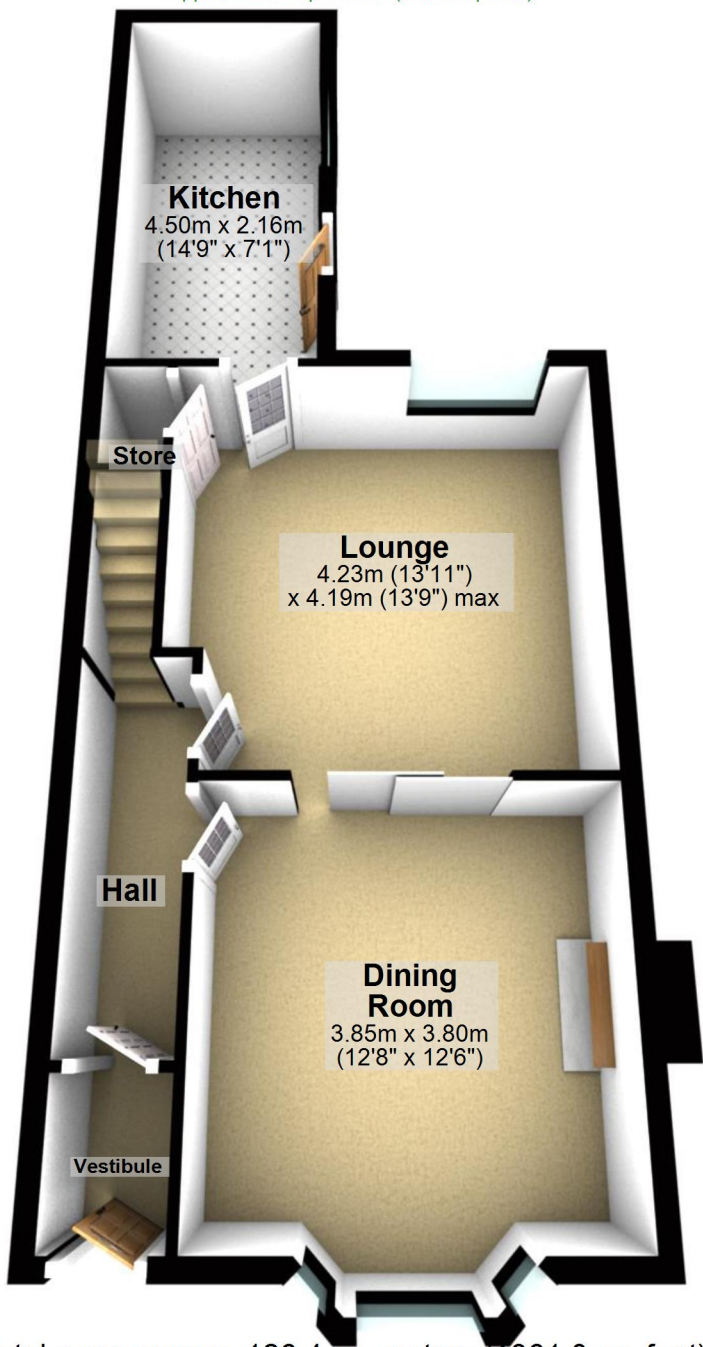
Second Floor

Approx. 25.7 sq. metres (276.5 sq. feet)



Ground Floor

Approx. 50.5 sq. metres (543.8 sq. feet)



Total area: approx. 126.4 sq. metres (1361.0 sq. feet)

For illustrative purposes only. Not to scale. All sizes are approximate.

Plan produced using PlanUp.

First Floor

Approx. 50.2 sq. metres (540.7 sq. feet)



Shower Room

A 3D perspective floor plan of the first floor. The layout includes a shower room at the top, a central landing with a staircase, and two bedrooms. The shower room contains a toilet, a sink, and a shower. The landing has a staircase with a metal handrail. Bedroom 2 is a rectangular room with a window. Bedroom 1 is a larger rectangular room with a window. The walls are white, and the floors are light-colored. The overall style is clean and modern.

Landing

Bedroom 2
4.23m x 3.02m
(13'11" x 9'11")

Bedroom 1
3.84m x 4.93m
(12'7" x 16'2")

Second Floor

Approx. 25.7 sq. metres (276.5 sq. feet)

