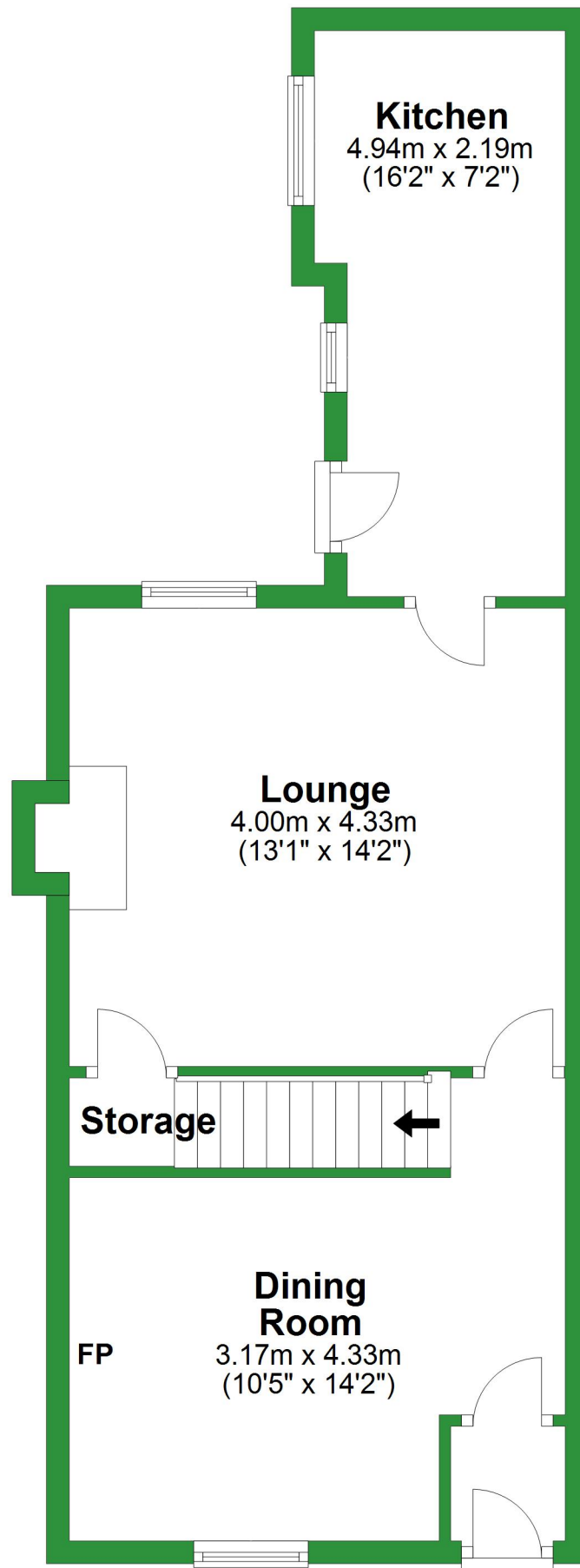


# Ground Floor

Approx. 43.1 sq. metres (463.5 sq. feet)

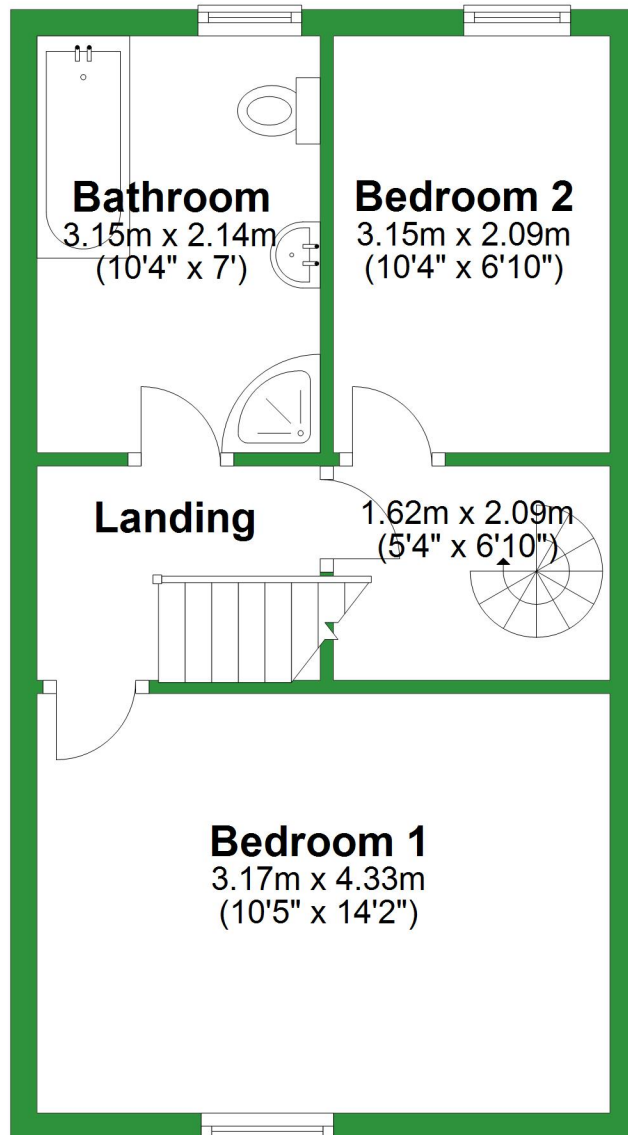


Total area: approx. 95.1 sq. metres (1023.9 sq. feet)

For illustrative purposes only. Not to scale. All sizes are approximate.  
Plan produced using PlanUp.

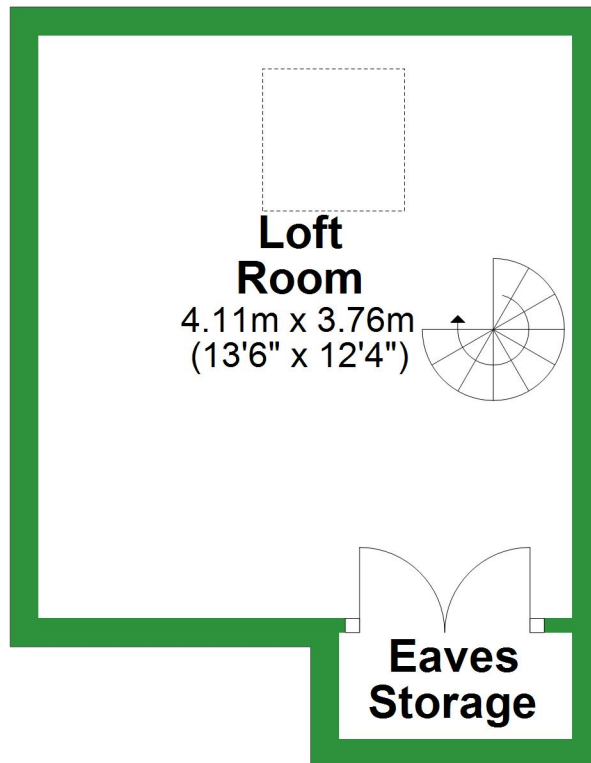
# First Floor

Approx. 35.2 sq. metres (379.4 sq. feet)



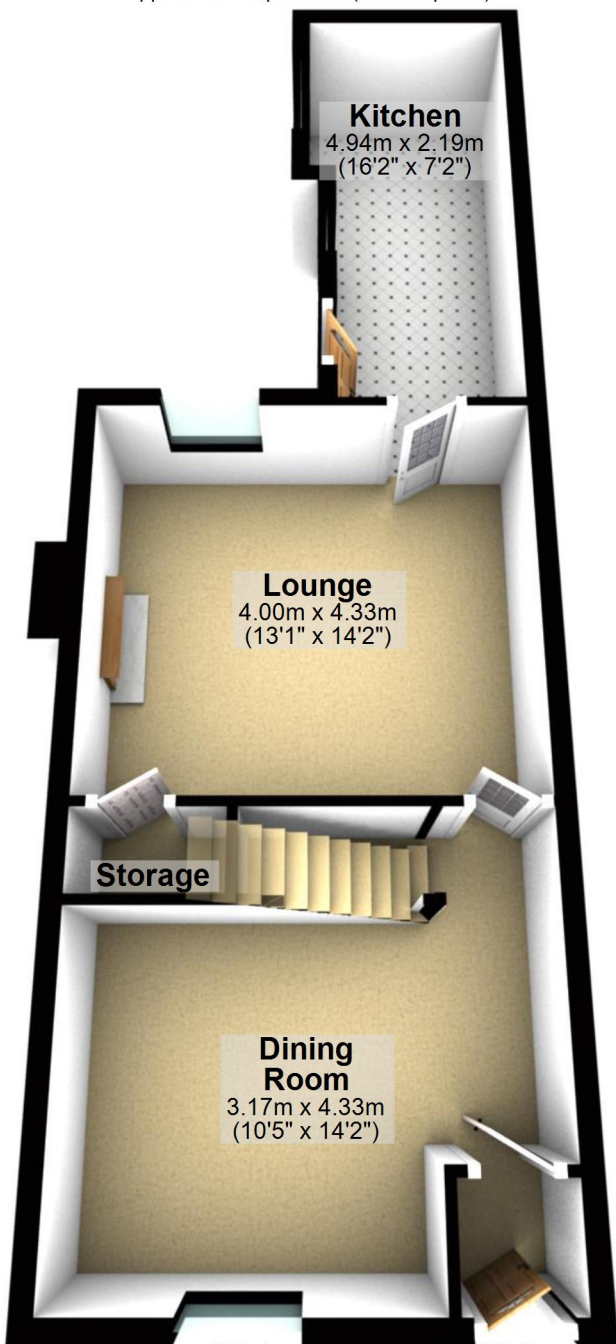
## Second Floor

Approx. 16.8 sq. metres (181.1 sq. feet)



# Ground Floor

Approx. 43.1 sq. metres (463.5 sq. feet)



## Kitchen

4.94m x 2.19m  
(16'2" x 7'2")

## Lounge

4.00m x 4.33m  
(13'1" x 14'2")

## Storage

## Dining Room

3.17m x 4.33m  
(10'5" x 14'2")

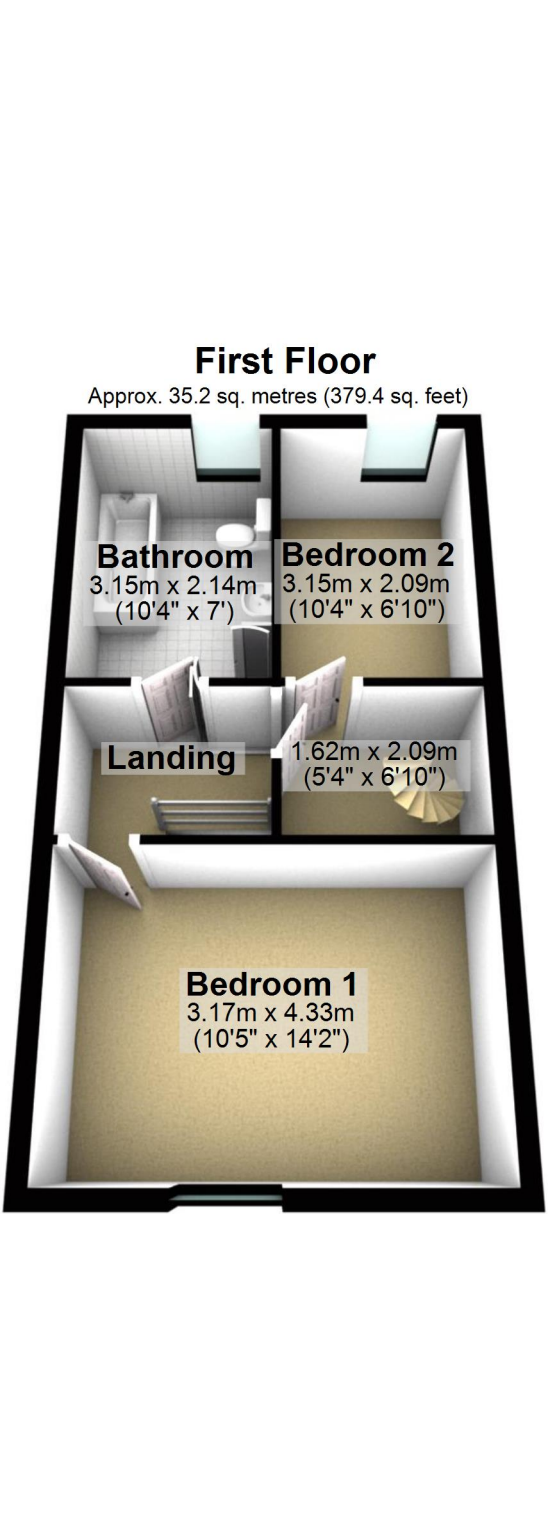
Total area: approx. 95.1 sq. metres (1023.9 sq. feet)

For illustrative purposes only. Not to scale. All sizes are approximate.

Plan produced using PlanUp.

## First Floor

Approx. 35.2 sq. metres (379.4 sq. feet)



**Bathroom**  
3.15m x 2.14m  
(10'4" x 7')

**Bedroom 2**  
3.15m x 2.09m  
(10'4" x 6'10")

**Landing**

1.62m x 2.09m  
(5'4" x 6'10")

**Bedroom 1**  
3.17m x 4.33m  
(10'5" x 14'2")

## Second Floor

Approx. 16.8 sq. metres (181.1 sq. feet)

