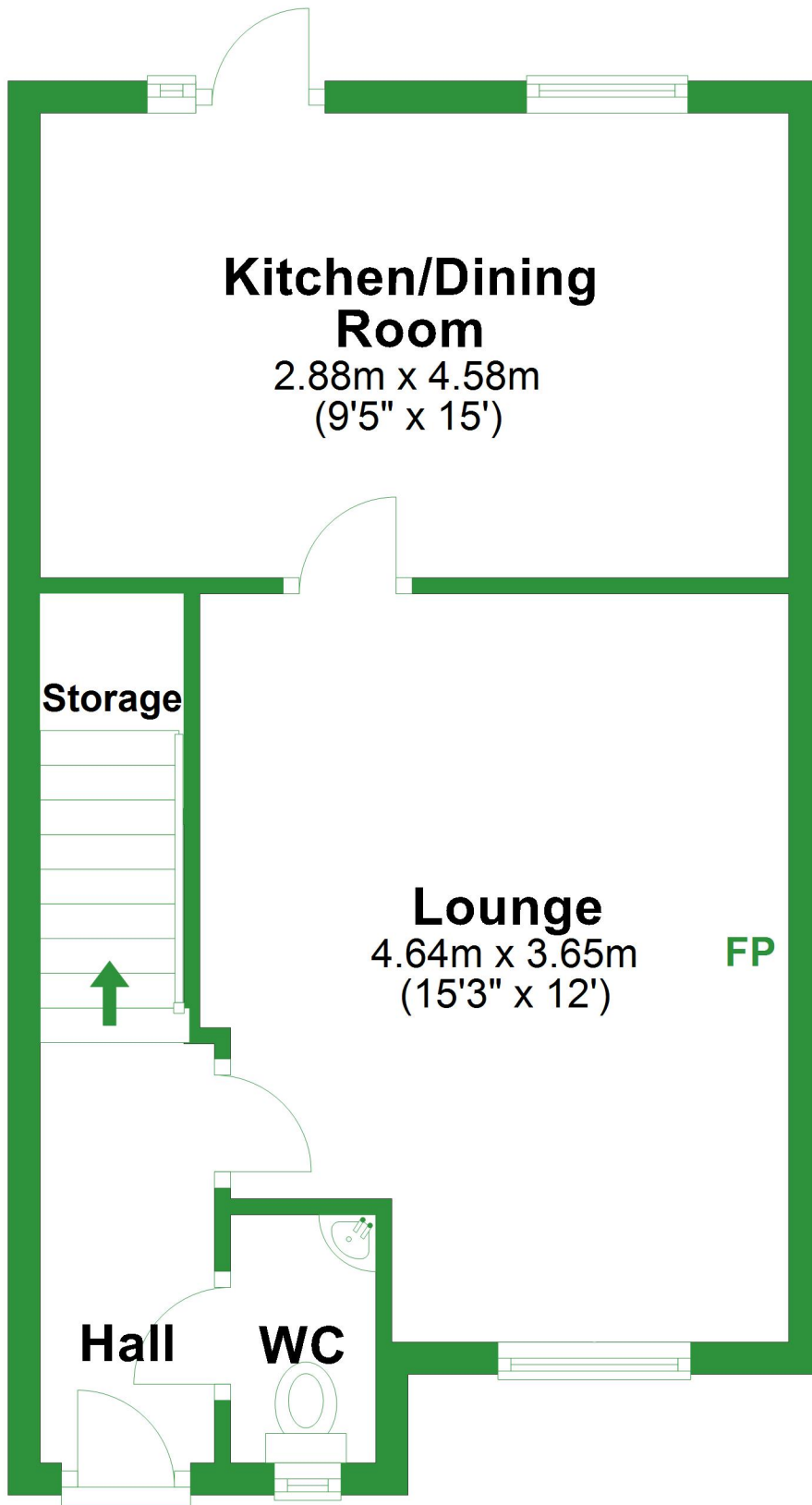


Ground Floor

Approx. 36.9 sq. metres (397.5 sq. feet)



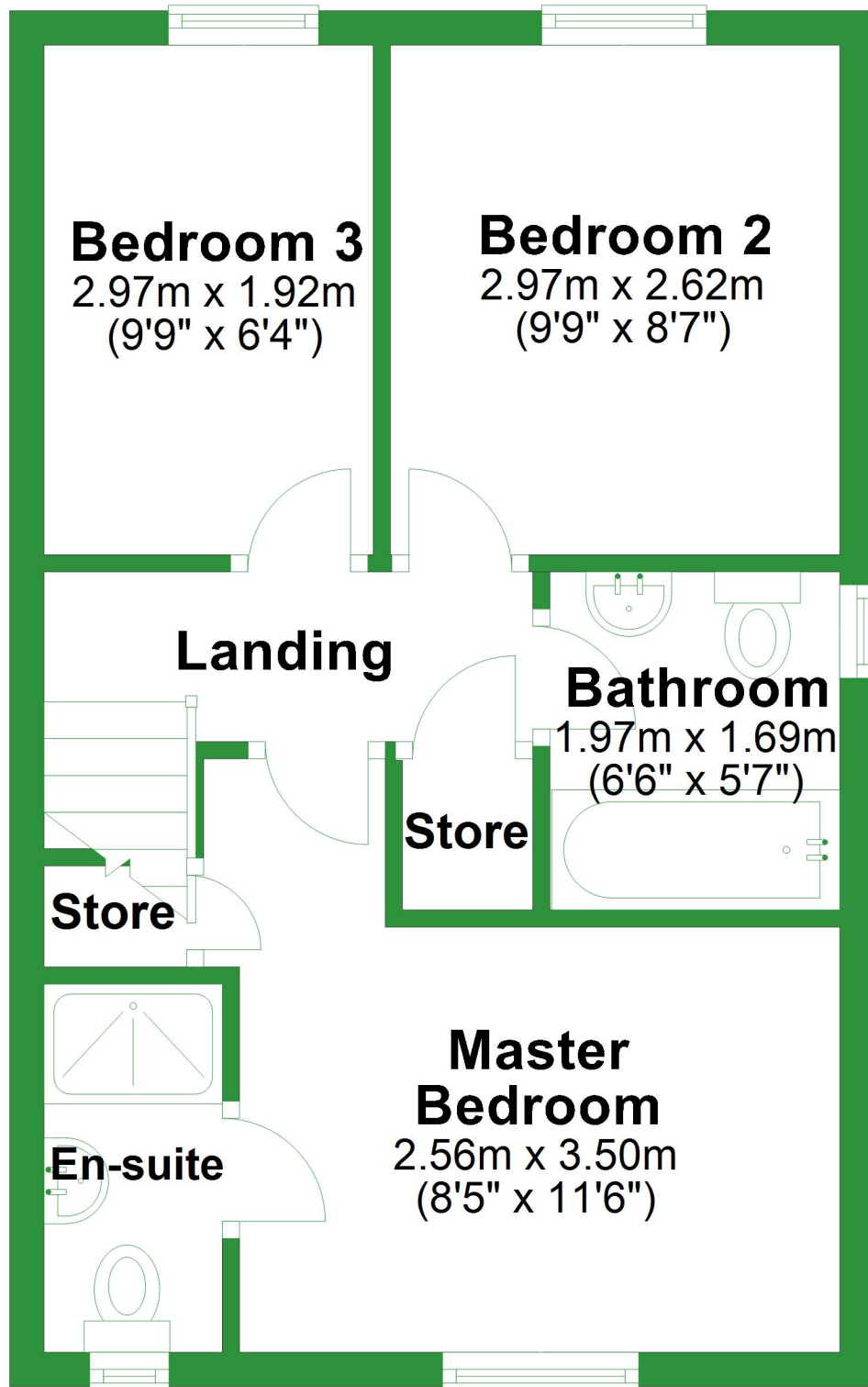
Total area: approx. 71.6 sq. metres (771.0 sq. feet)

For illustrative purposes only. Not to scale. All sizes are approximate.

Plan produced using PlanUp.

First Floor

Approx. 34.7 sq. metres (373.5 sq. feet)



Ground Floor

Approx. 36.9 sq. metres (397.5 sq. feet)

Kitchen/Dining Room

2.88m x 4.58m
(9'5" x 15')

Storage

Lounge

4.64m x 3.65m
(15'3" x 12')

Hall

WC

Total area: approx. 71.6 sq. metres (771.0 sq. feet)

For illustrative purposes only. Not to scale. All sizes are approximate.

Plan produced using PlanUp.

First Floor

Approx. 34.7 sq. metres (373.5 sq. feet)

Bedroom 3

2.97m x 1.92m
(9'9" x 6'4")

Bedroom 2

2.97m x 2.62m
(9'9" x 8'7")

Landing

Bathroom

1.97m x 1.69m
(6'6" x 5'7")

Store

Store

En-suite

**Master
Bedroom**

2.56m x 3.50m
(8'5" x 11'6")

