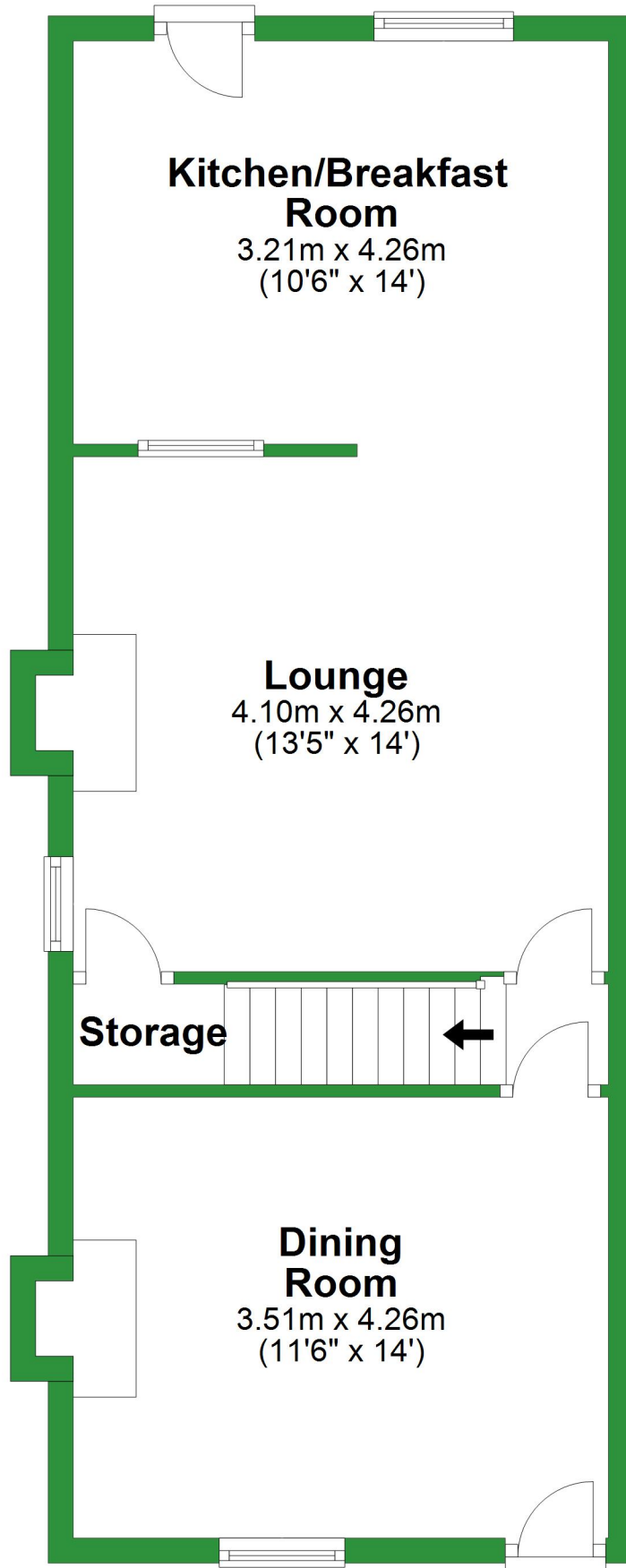


Ground Floor

Approx. 50.8 sq. metres (546.6 sq. feet)

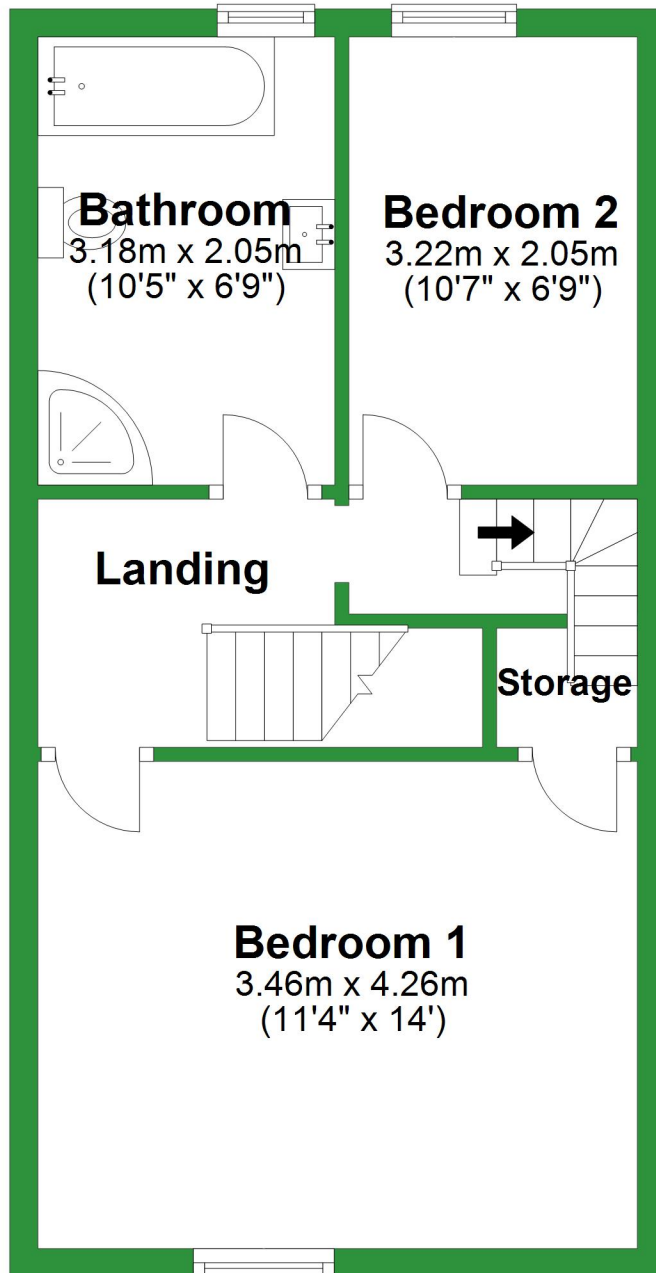


Total area: approx. 99.2 sq. metres (1067.5 sq. feet)

For illustrative purposes only. Not to scale. All sizes are approximate.
Plan produced using PlanUp.

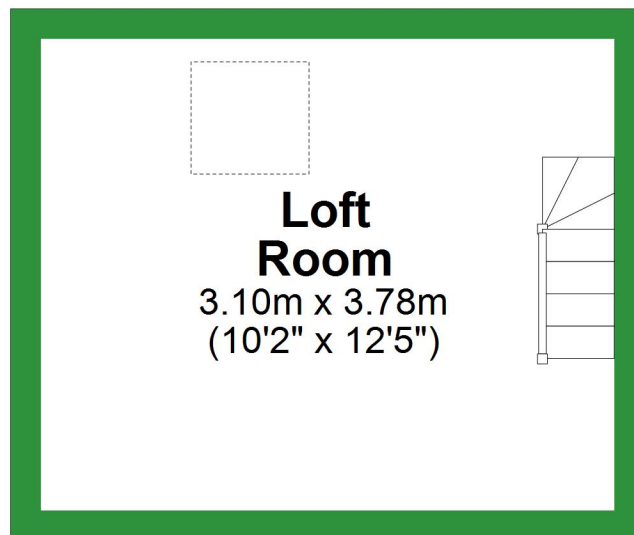
First Floor

Approx. 36.7 sq. metres (394.8 sq. feet)



Second Floor

Approx. 11.7 sq. metres (126.1 sq. feet)



Ground Floor

Approx. 50.8 sq. metres (546.6 sq. feet)

Kitchen/Breakfast Room

3.21m x 4.26m
(10'6" x 14')

Lounge

4.10m x 4.26m
(13'5" x 14')

Storage

Dining Room

3.51m x 4.26m
(11'6" x 14')

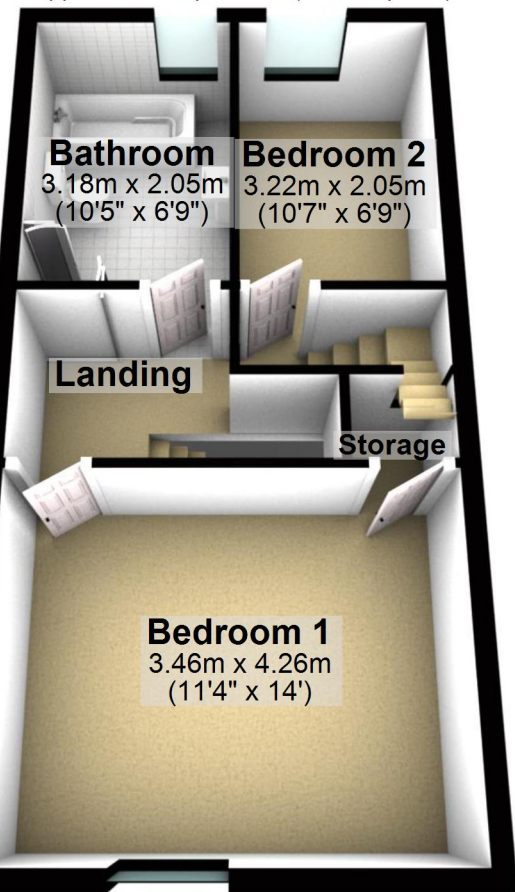
Total area: approx. 99.2 sq. metres (1067.5 sq. feet)

For illustrative purposes only. Not to scale. All sizes are approximate.

Plan produced using PlanUp.

First Floor

Approx. 36.7 sq. metres (394.8 sq. feet)



Second Floor

Approx. 11.7 sq. metres (126.1 sq. feet)

A 3D architectural rendering of a loft room. The room has a light-colored carpeted floor and white walls. A staircase with a white railing is visible on the right side, leading up to a higher level. The room is framed by a thick black border.

Loft Room

3.10m x 3.78m
(10'2" x 12'5")