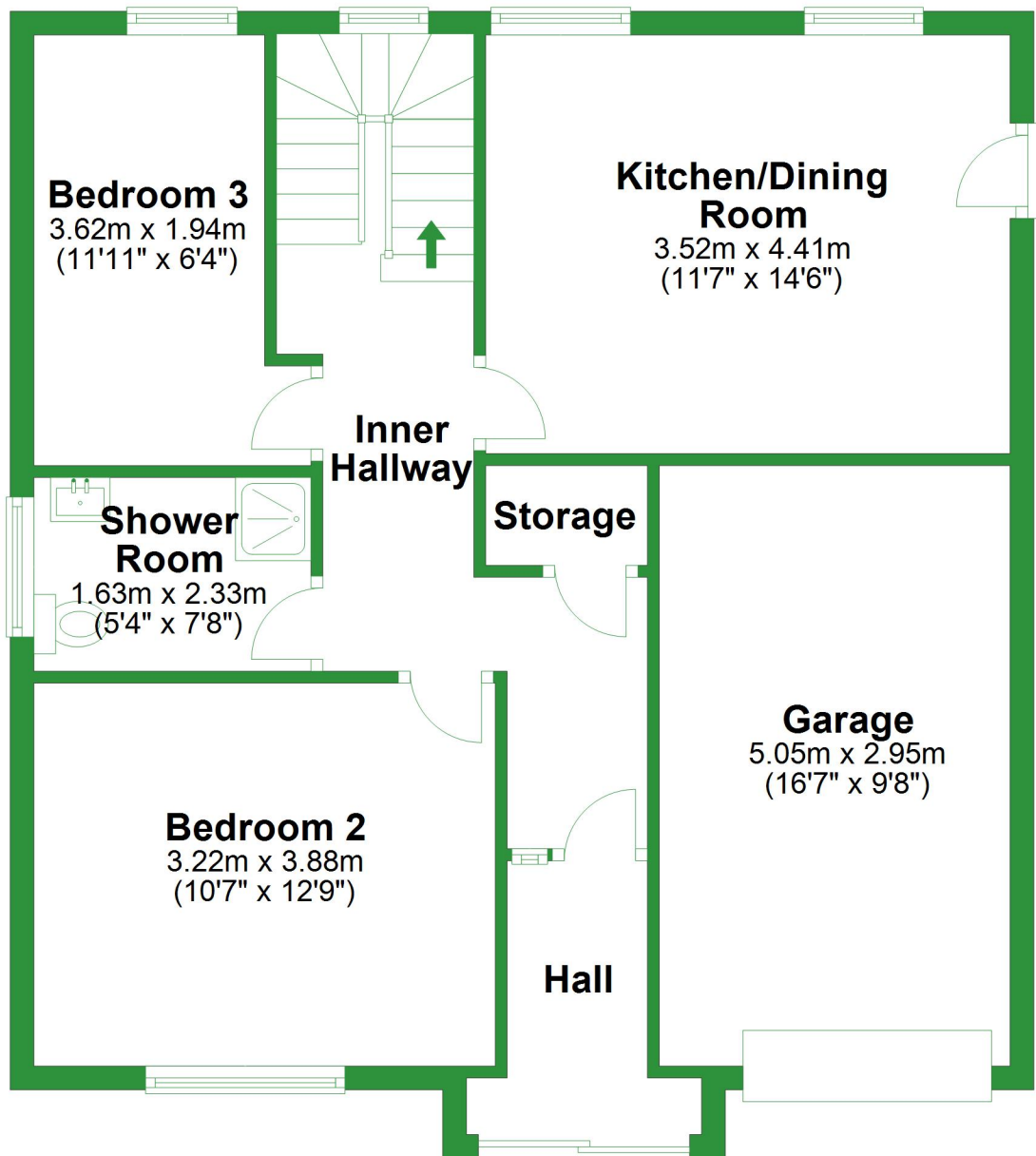


# Ground Floor

Approx. 72.3 sq. metres (778.4 sq. feet)



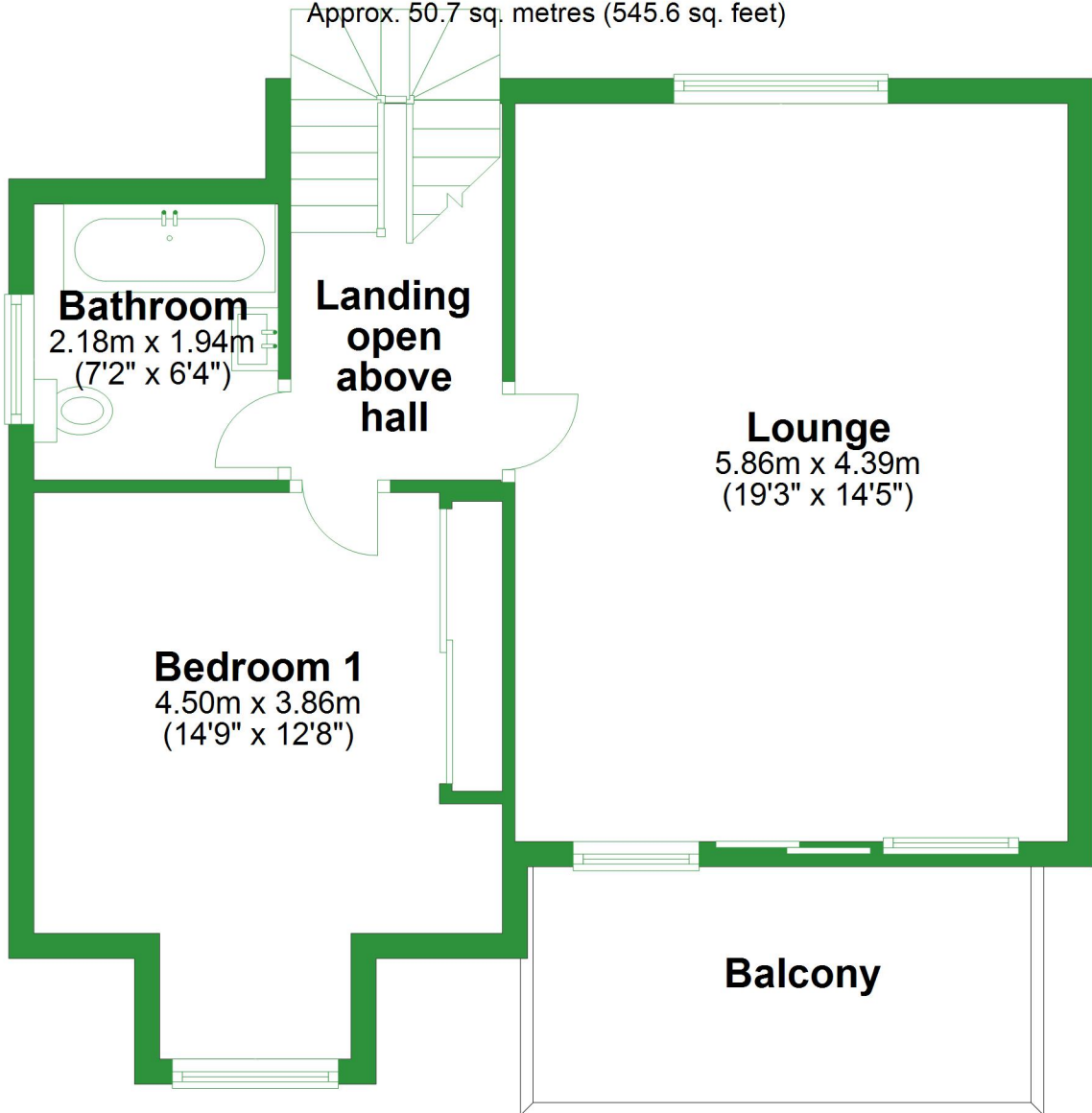
Total area: approx. 123.0 sq. metres (1324.1 sq. feet)

For illustrative purposes only. Not to scale. All sizes are approximate.

Plan produced using PlanUp.

# First Floor

Approx. 50.7 sq. metres (545.6 sq. feet)



**Bathroom**

2.18m x 1.94m  
(7'2" x 6'4")

**Landing  
open  
above  
hall**

**Lounge**  
5.86m x 4.39m  
(19'3" x 14'5")

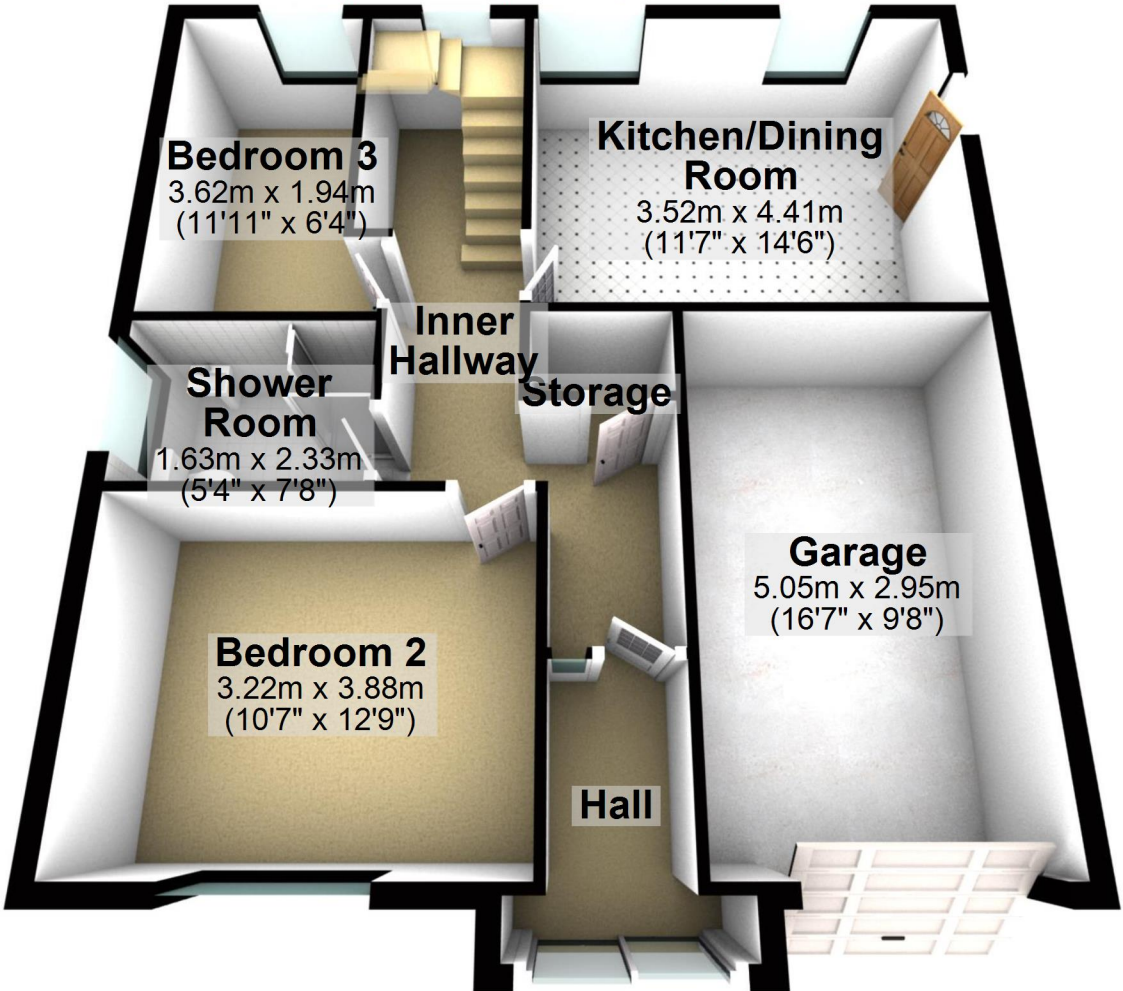
**Bedroom 1**

4.50m x 3.86m  
(14'9" x 12'8")

**Balcony**

## Ground Floor

Approx. 72.3 sq. metres (778.4 sq. feet)



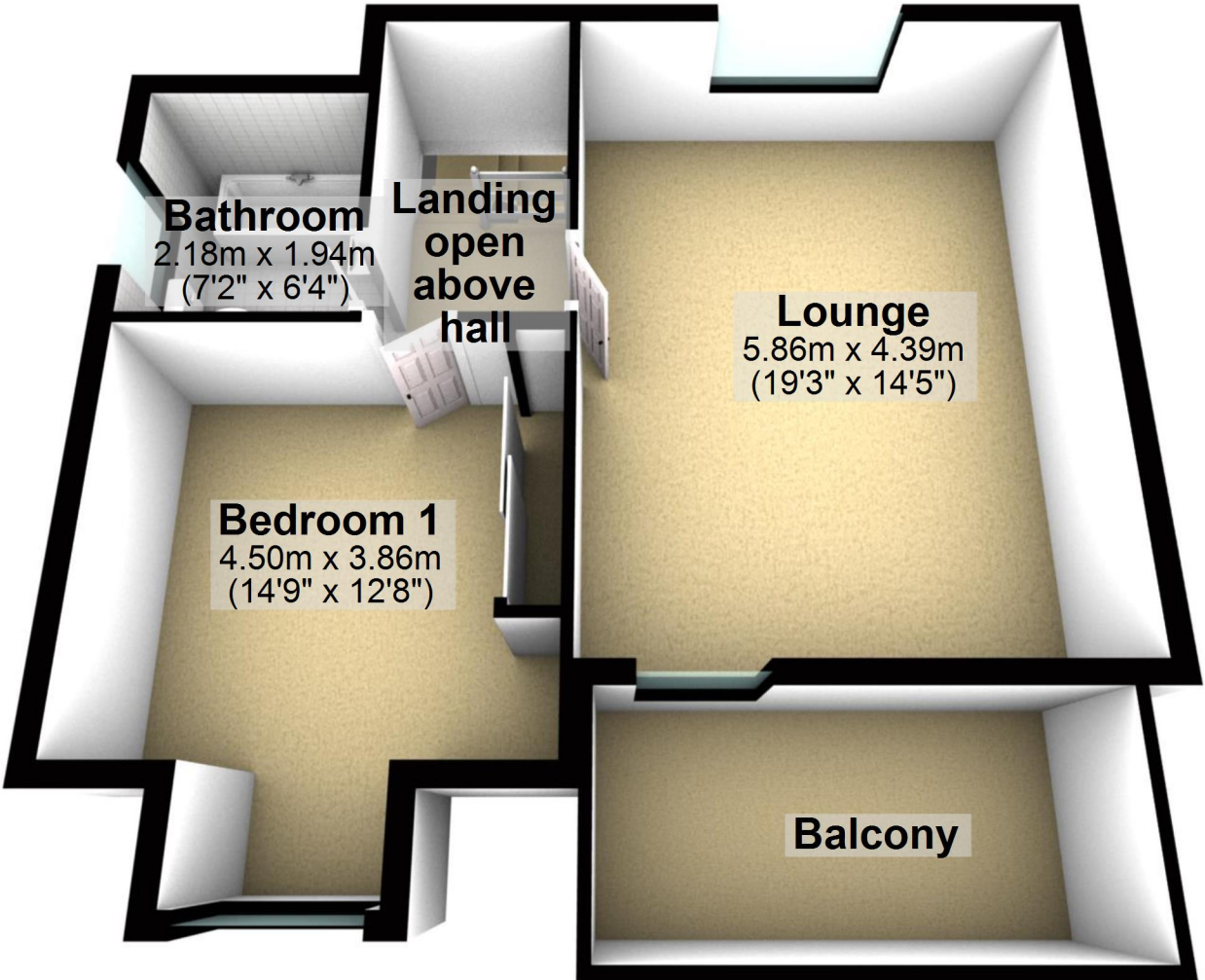
Total area: approx. 123.0 sq. metres (1324.1 sq. feet)

For illustrative purposes only. Not to scale. All sizes are approximate.

Plan produced using PlanUp.

# First Floor

Approx. 50.7 sq. metres (545.6 sq. feet)



**Bathroom**  
2.18m x 1.94m  
(7'2" x 6'4")

**Landing  
open  
above  
hall**

**Lounge**  
5.86m x 4.39m  
(19'3" x 14'5")

**Bedroom 1**  
4.50m x 3.86m  
(14'9" x 12'8")

**Balcony**