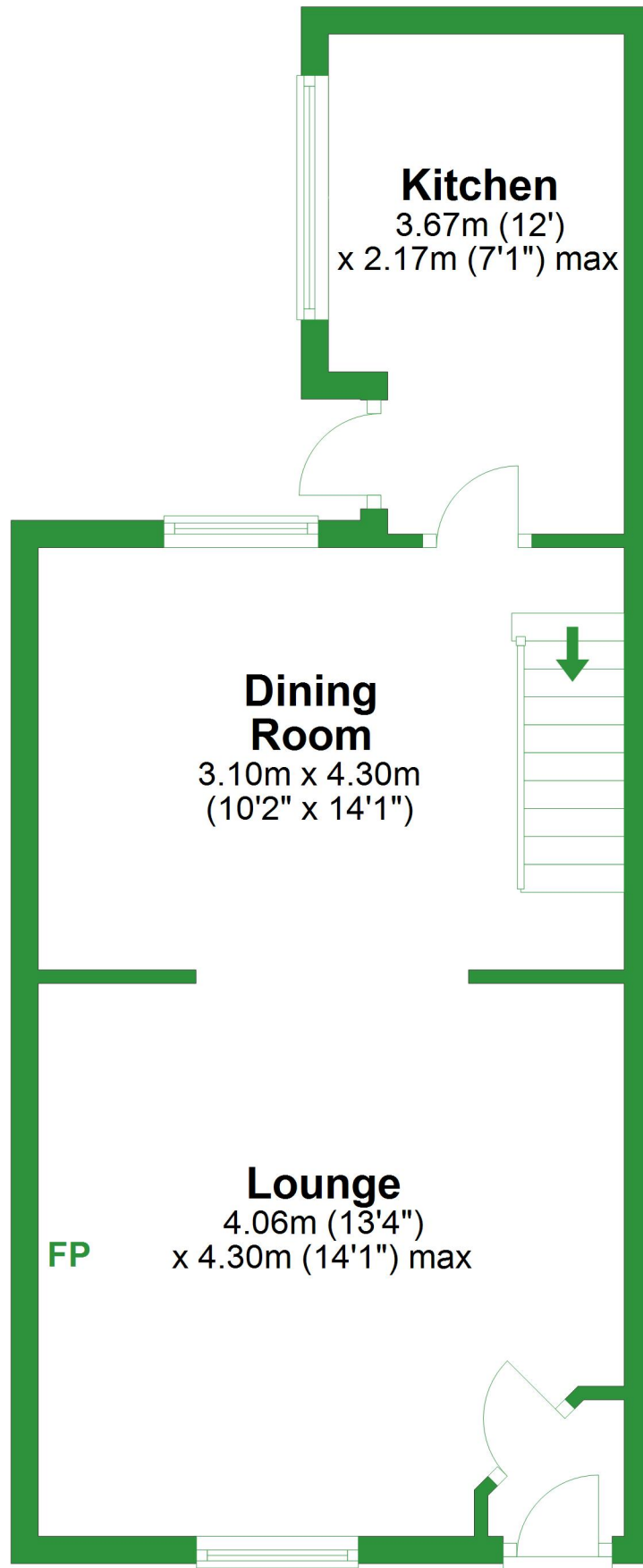


Ground Floor

Approx. 38.8 sq. metres (418.0 sq. feet)

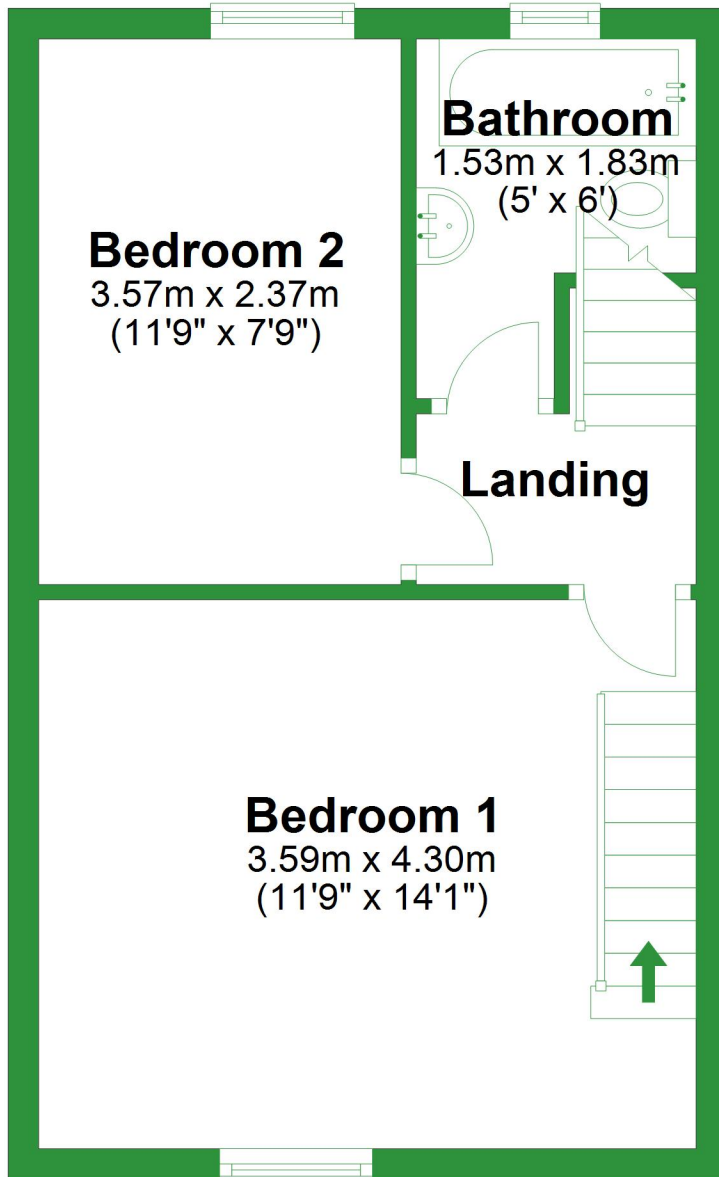


Total area: approx. 90.3 sq. metres (972.4 sq. feet)

For illustrative purposes only. Not to scale. All sizes are approximate.
Plan produced using PlanUp.

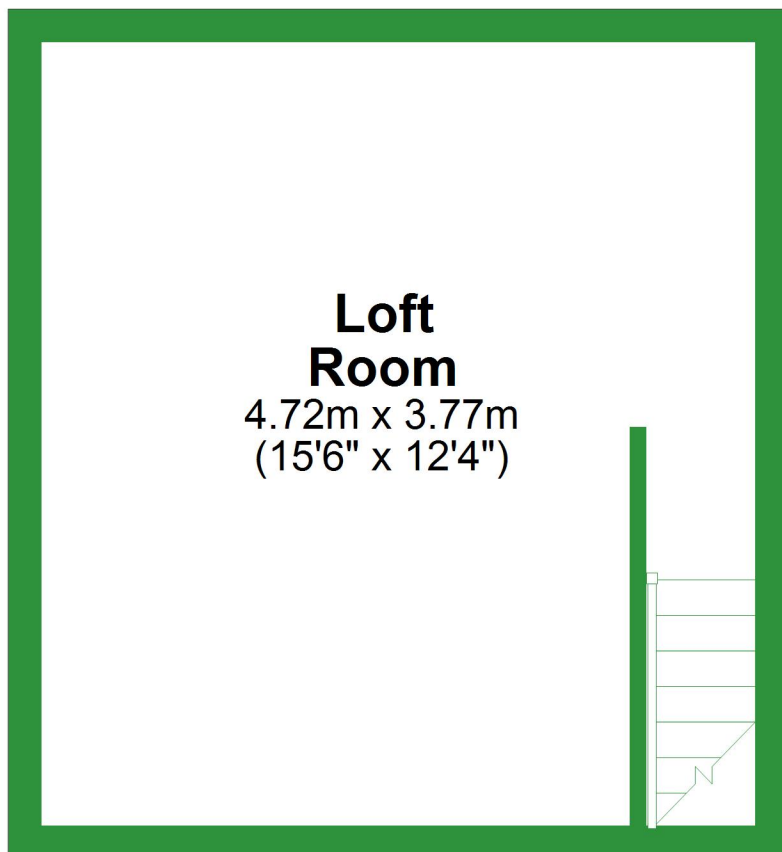
First Floor

Approx. 31.2 sq. metres (336.0 sq. feet)



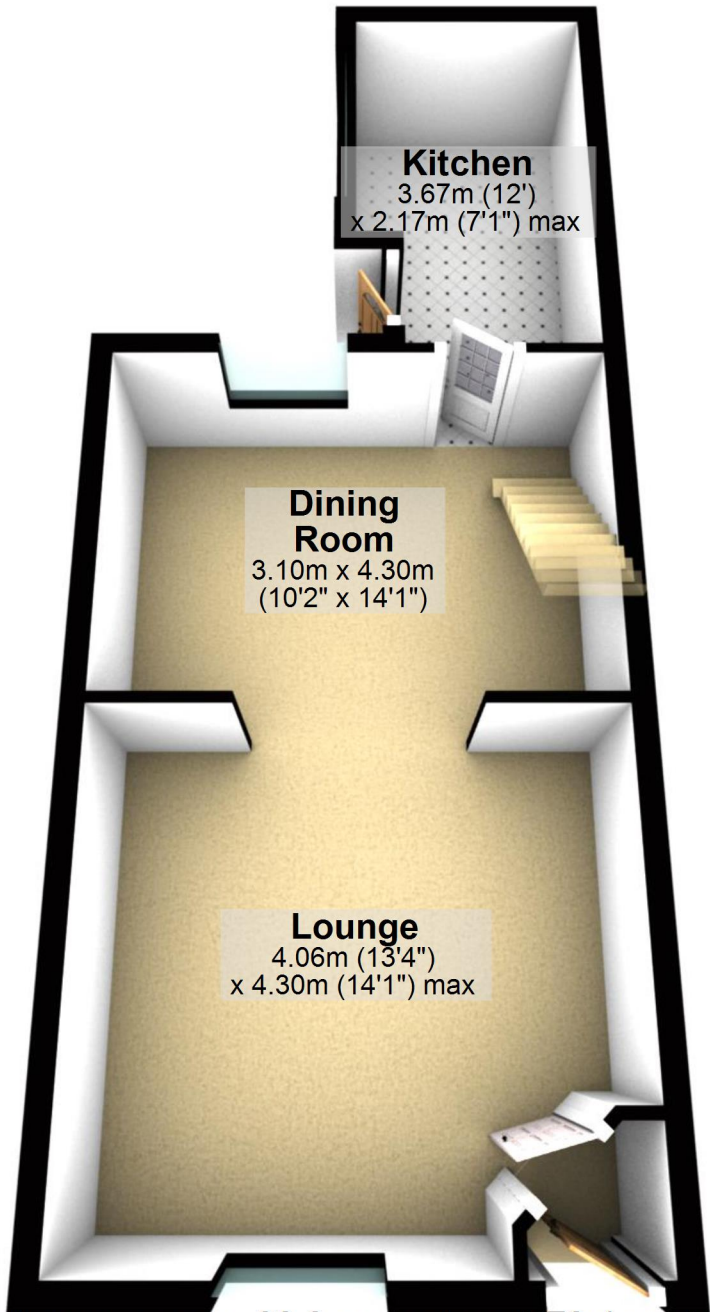
Second Floor

Approx. 20.3 sq. metres (218.4 sq. feet)



Ground Floor

Approx. 38.8 sq. metres (418.0 sq. feet)



Kitchen

3.67m (12')
x 2.17m (7'1") max

Dining Room

3.10m x 4.30m
(10'2" x 14'1")

Lounge

4.06m (13'4")
x 4.30m (14'1") max

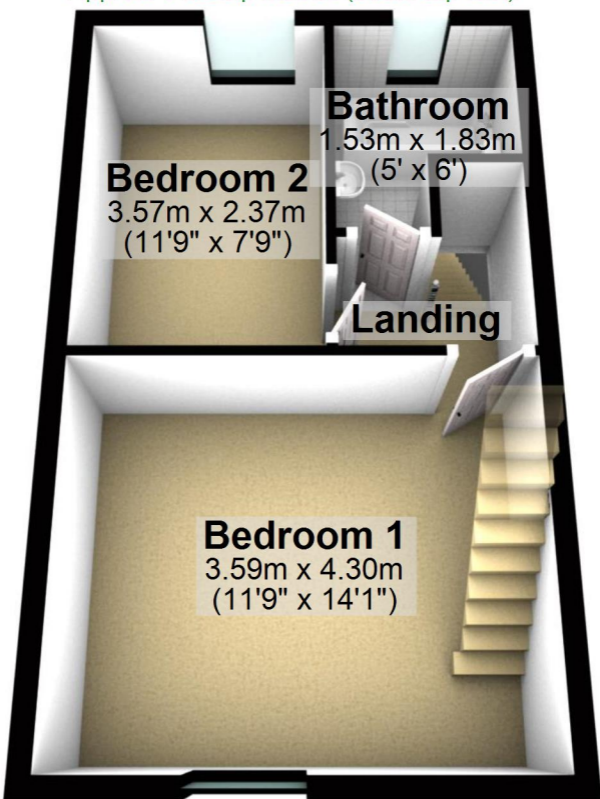
Total area: approx. 90.3 sq. metres (972.4 sq. feet)

For illustrative purposes only. Not to scale. All sizes are approximate.

Plan produced using PlanUp.

First Floor

Approx. 31.2 sq. metres (336.0 sq. feet)

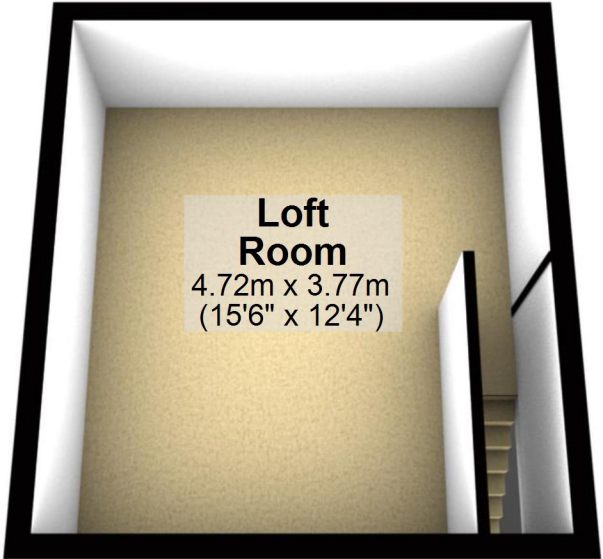


Second Floor

Approx. 20.3 sq. metres (218.4 sq. feet)

Loft Room

4.72m x 3.77m
(15'6" x 12'4")

A 3D architectural rendering of a loft room. The room has a light brown carpeted floor and white walls. A staircase with a black handrail is visible on the right side. The room is framed by a thick black border.