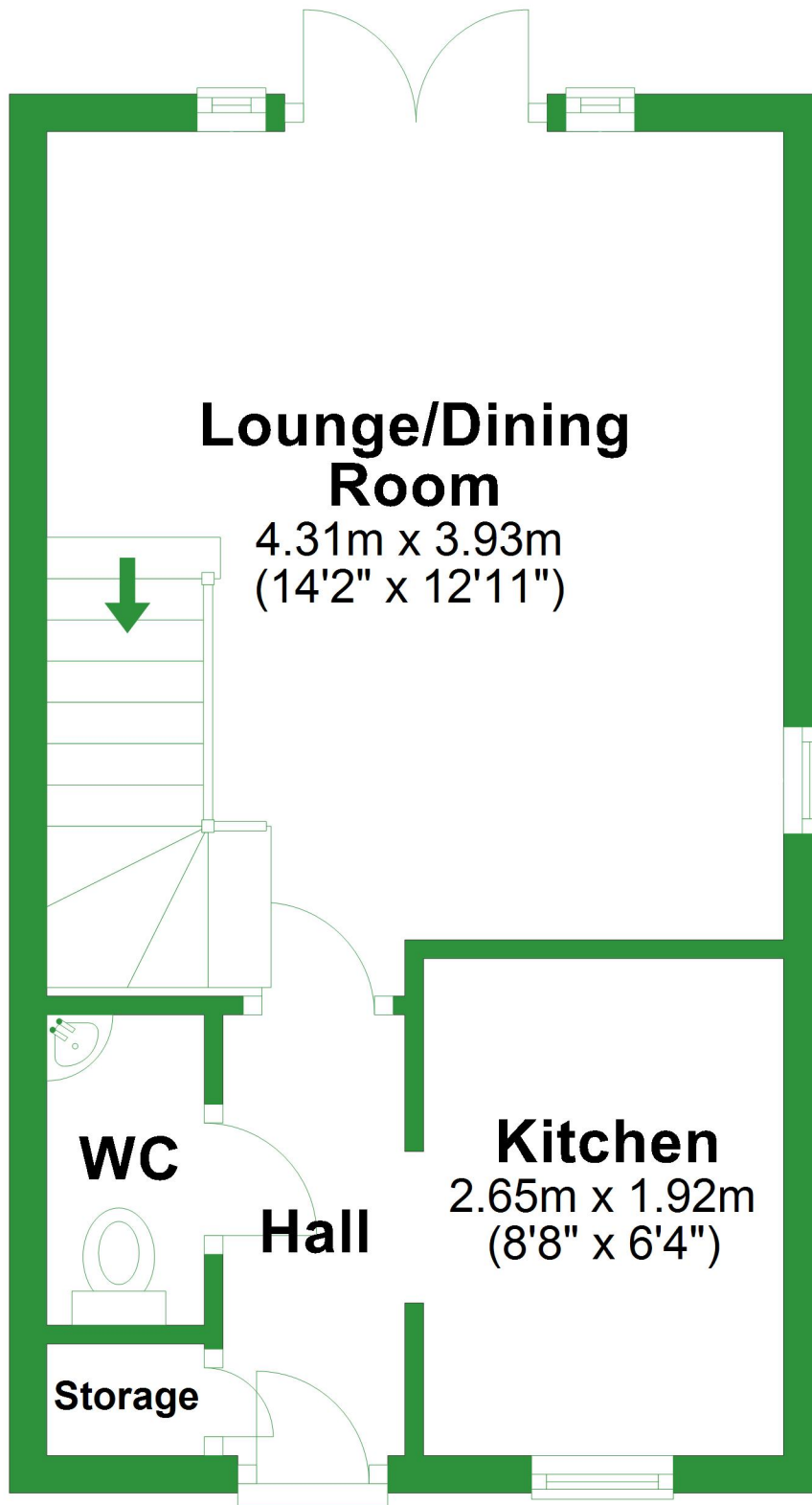


# Ground Floor

Approx. 27.7 sq. metres (297.8 sq. feet)



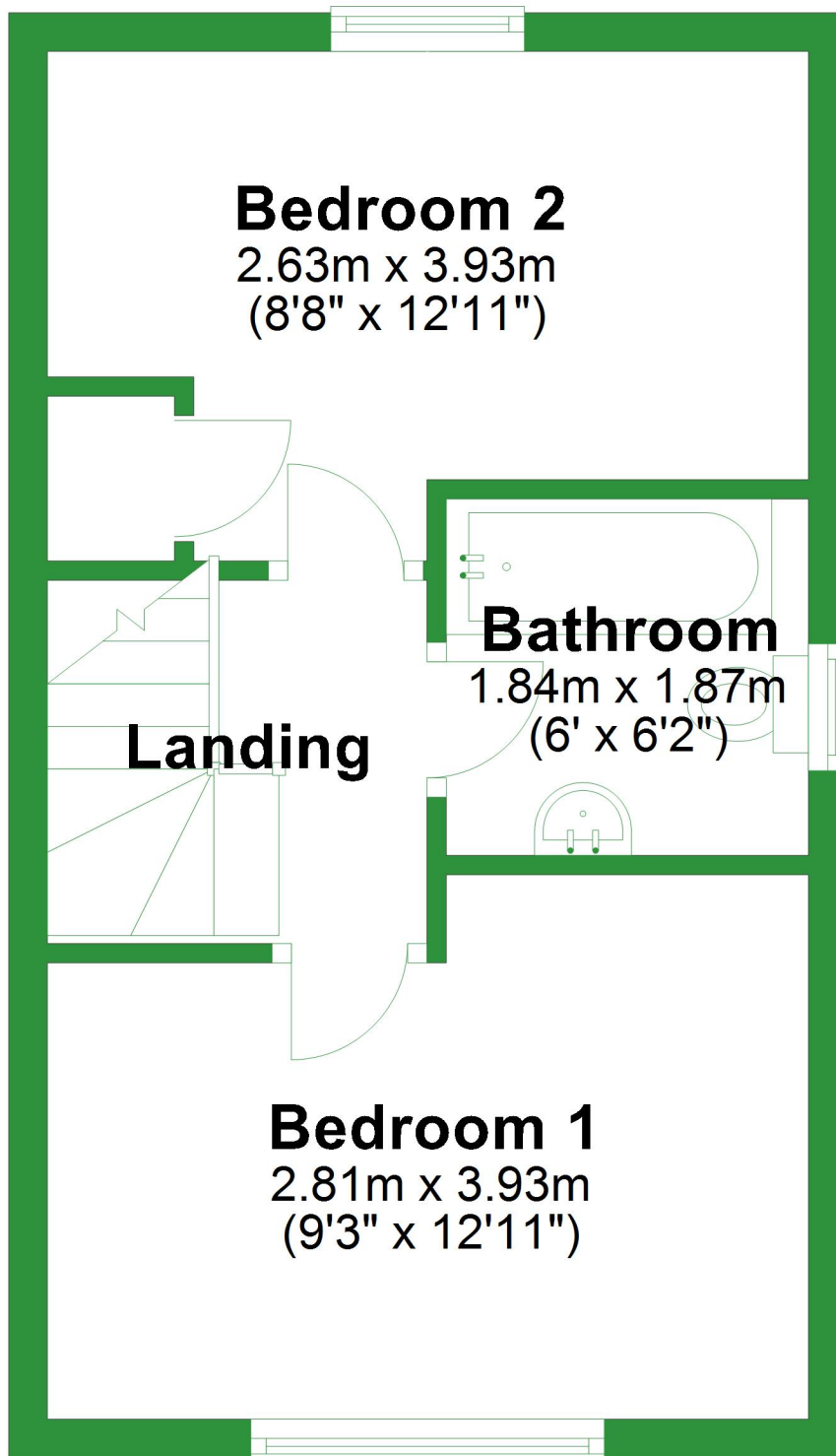
Total area: approx. 55.4 sq. metres (596.4 sq. feet)

For illustrative purposes only. Not to scale. All sizes are approximate.

Plan produced using PlanUp.

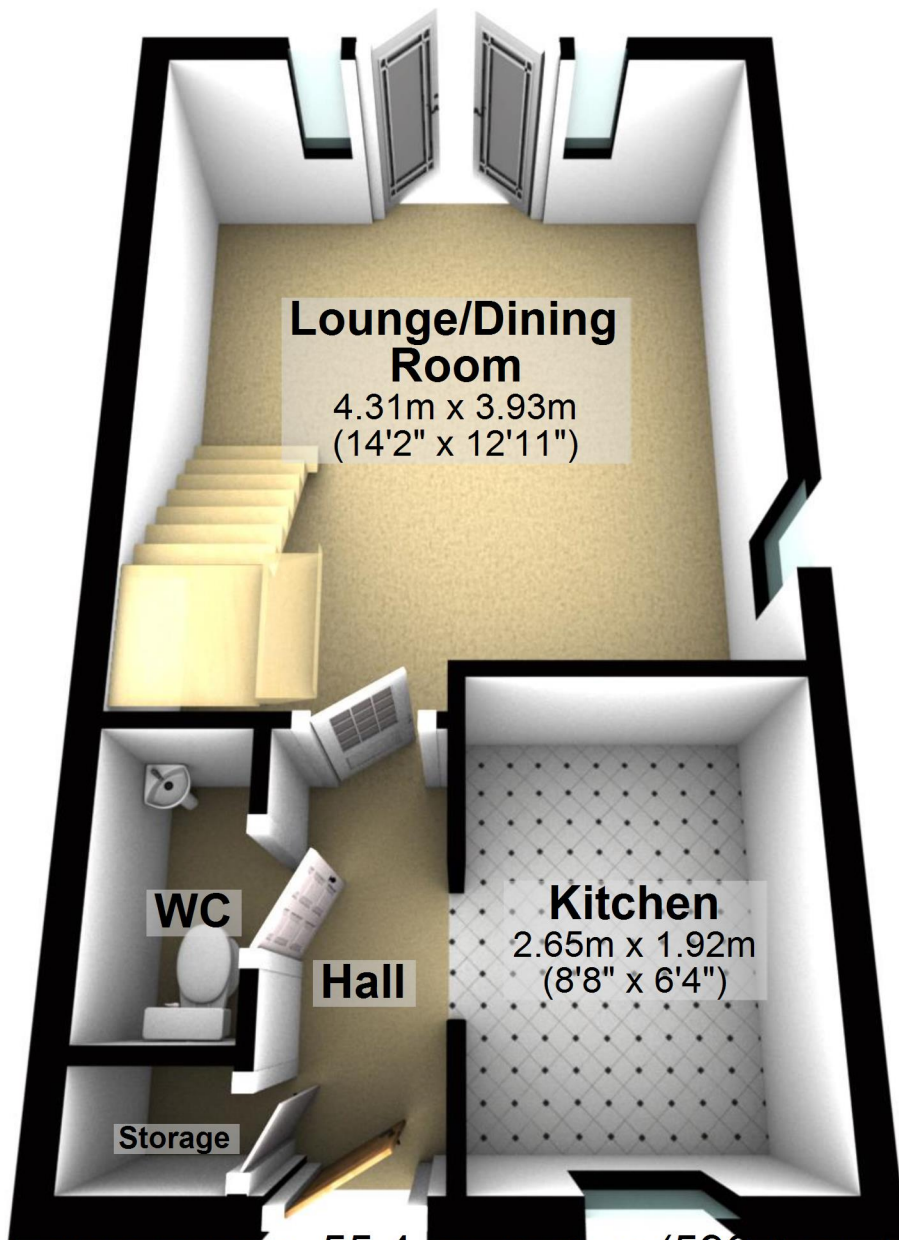
# First Floor

Approx. 27.7 sq. metres (298.7 sq. feet)



# Ground Floor

Approx. 27.7 sq. metres (297.8 sq. feet)



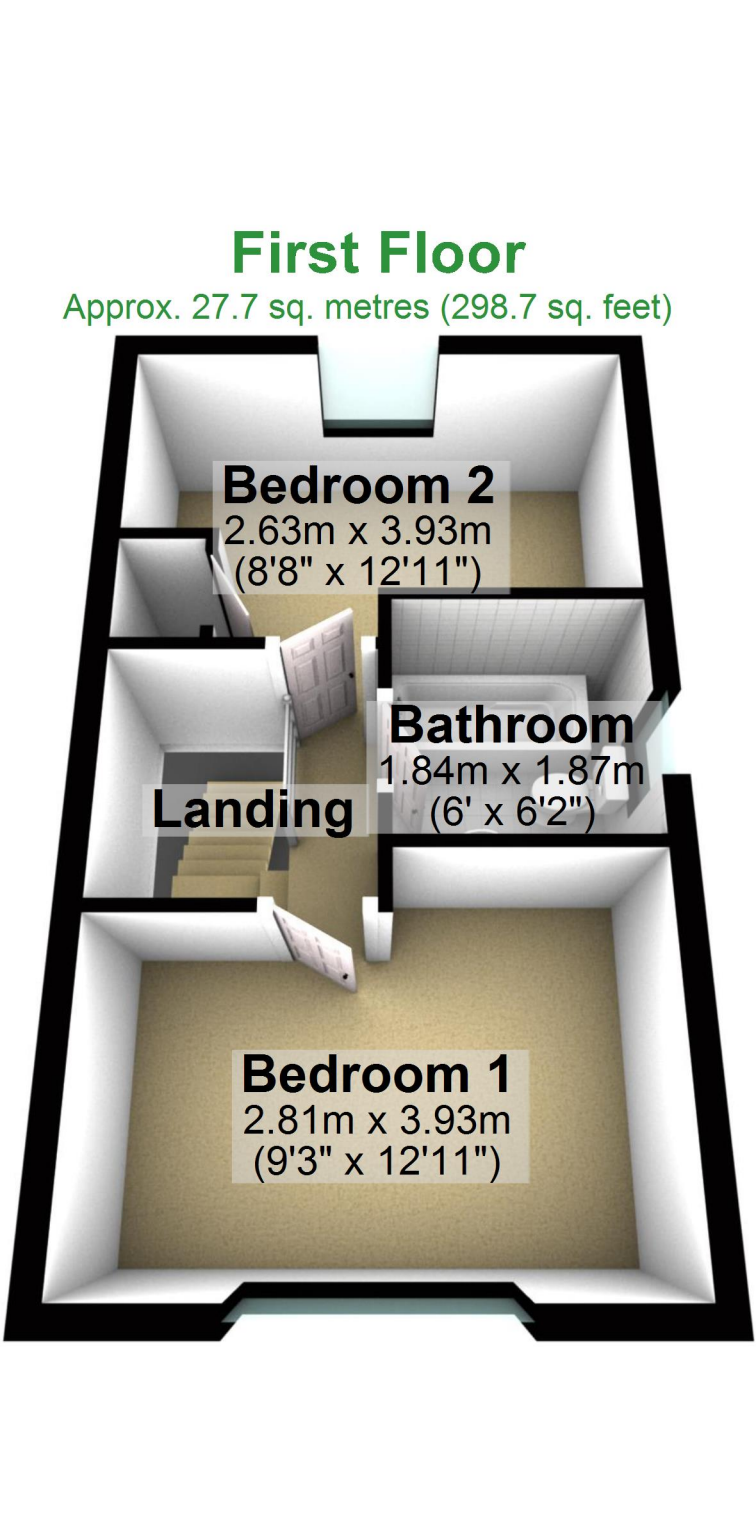
Total area: approx. 55.4 sq. metres (596.4 sq. feet)

For illustrative purposes only. Not to scale. All sizes are approximate.

Plan produced using PlanUp.

# First Floor

Approx. 27.7 sq. metres (298.7 sq. feet)



**Bedroom 2**  
2.63m x 3.93m  
(8'8" x 12'11")

**Bathroom**  
1.84m x 1.87m  
(6' x 6'2")

**Landing**

**Bedroom 1**  
2.81m x 3.93m  
(9'3" x 12'11")