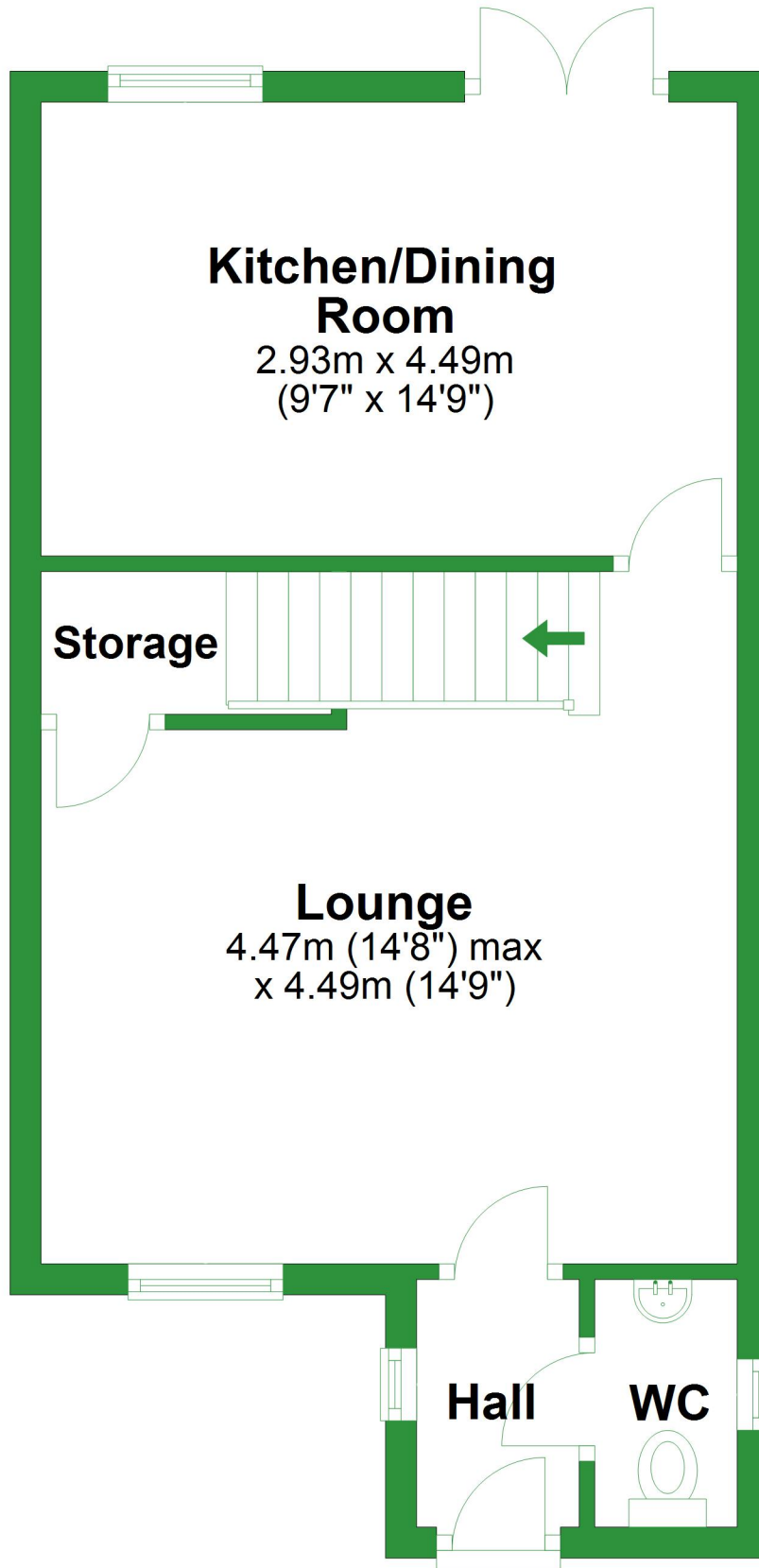


# Ground Floor

Approx. 38.9 sq. metres (418.9 sq. feet)

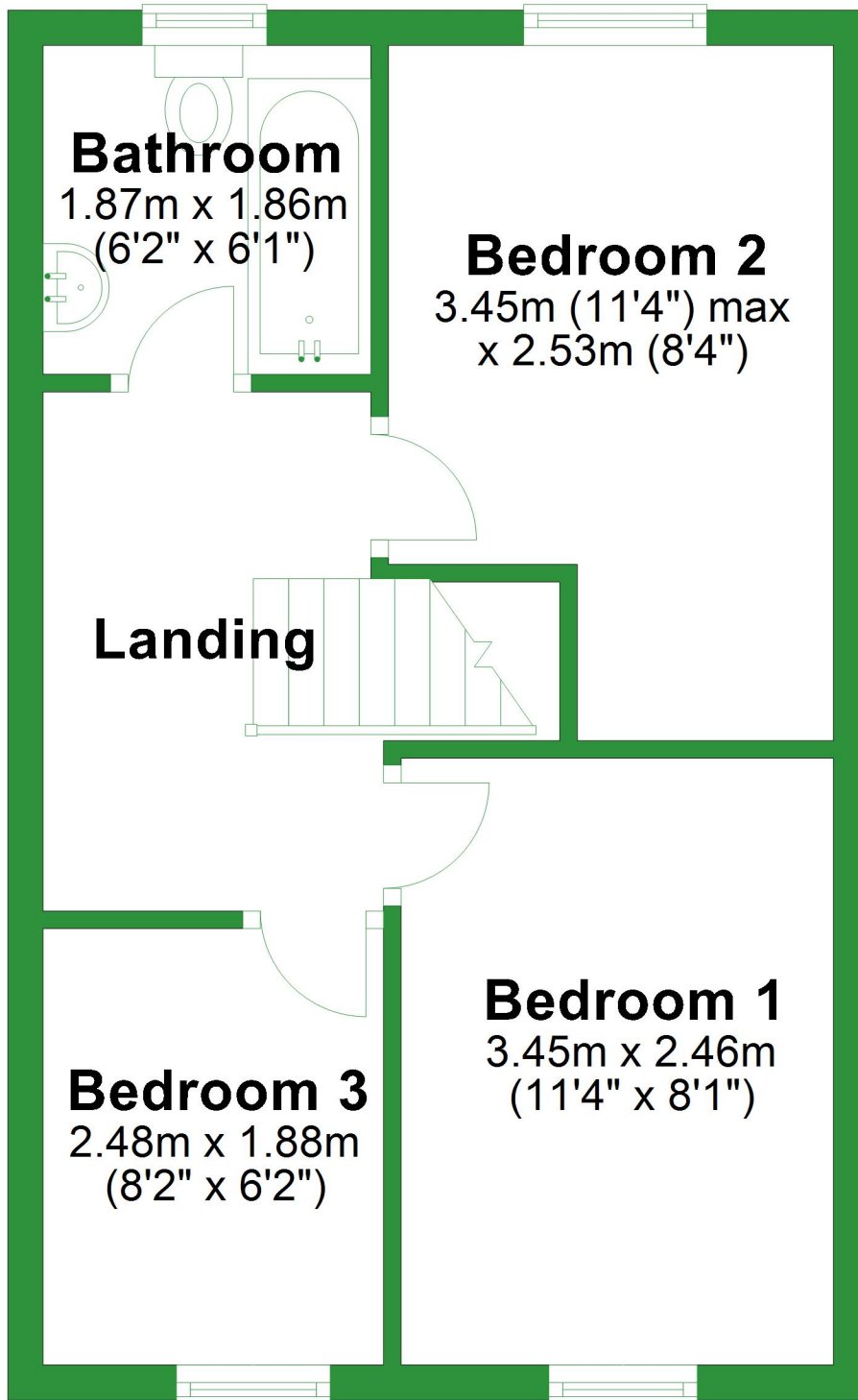


Total area: approx. 72.5 sq. metres (780.2 sq. feet)

For illustrative purposes only. Not to scale. All sizes are approximate.  
Plan produced using PlanUp.

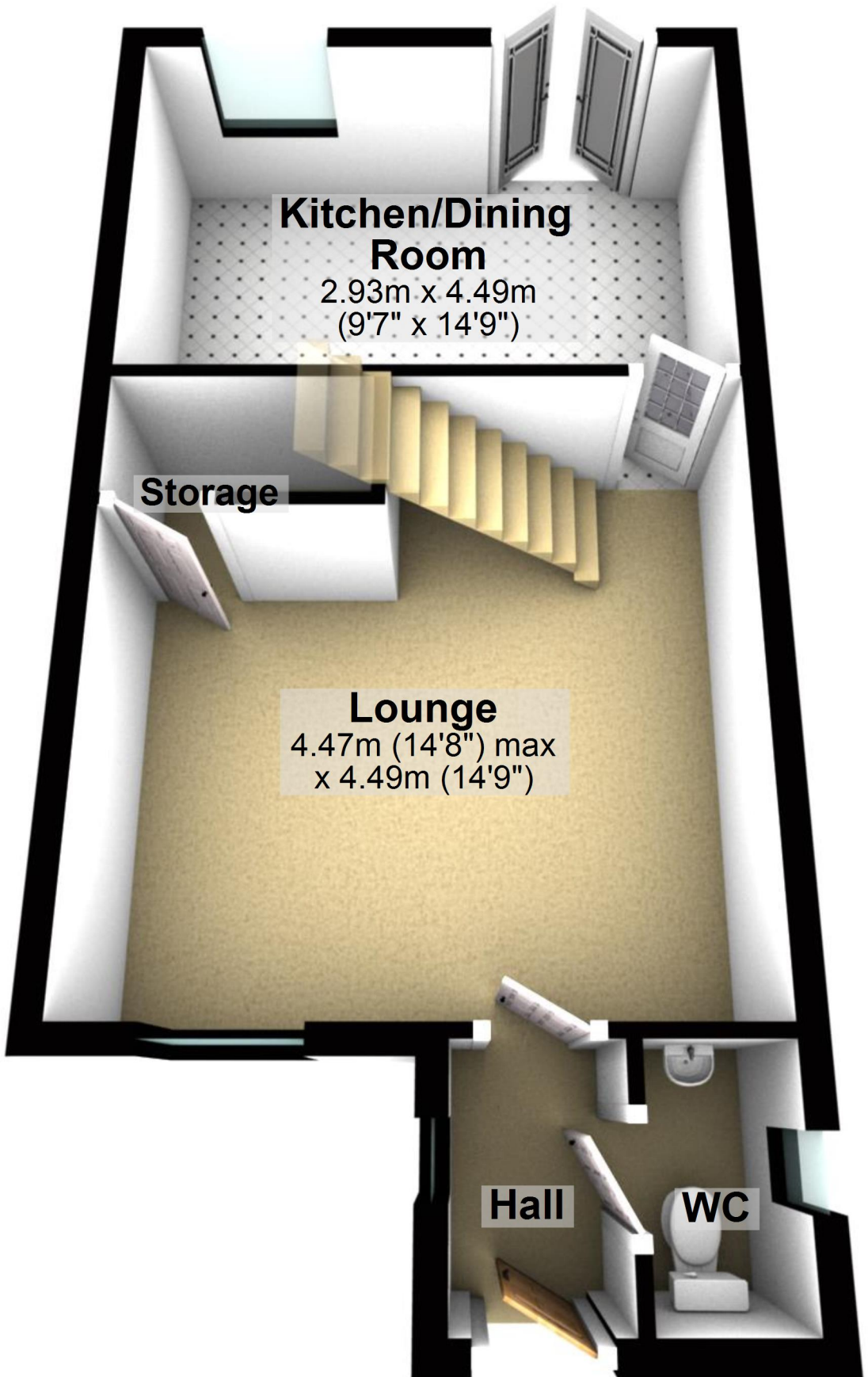
# First Floor

Approx. 33.6 sq. metres (361.3 sq. feet)



# Ground Floor

Approx. 38.9 sq. metres (418.9 sq. feet)



Total area: approx. 72.5 sq. metres (780.2 sq. feet)

For illustrative purposes only. Not to scale. All sizes are approximate.

Plan produced using PlanUp.

# First Floor

Approx. 33.6 sq. metres (361.3 sq. feet)

## Bathroom

1.87m x 1.86m  
(6'2" x 6'1")

## Bedroom 2

3.45m (11'4") max  
x 2.53m (8'4")

## Landing

## Bedroom 3

2.48m x 1.88m  
(8'2" x 6'2")

## Bedroom 1

3.45m x 2.46m  
(11'4" x 8'1")

