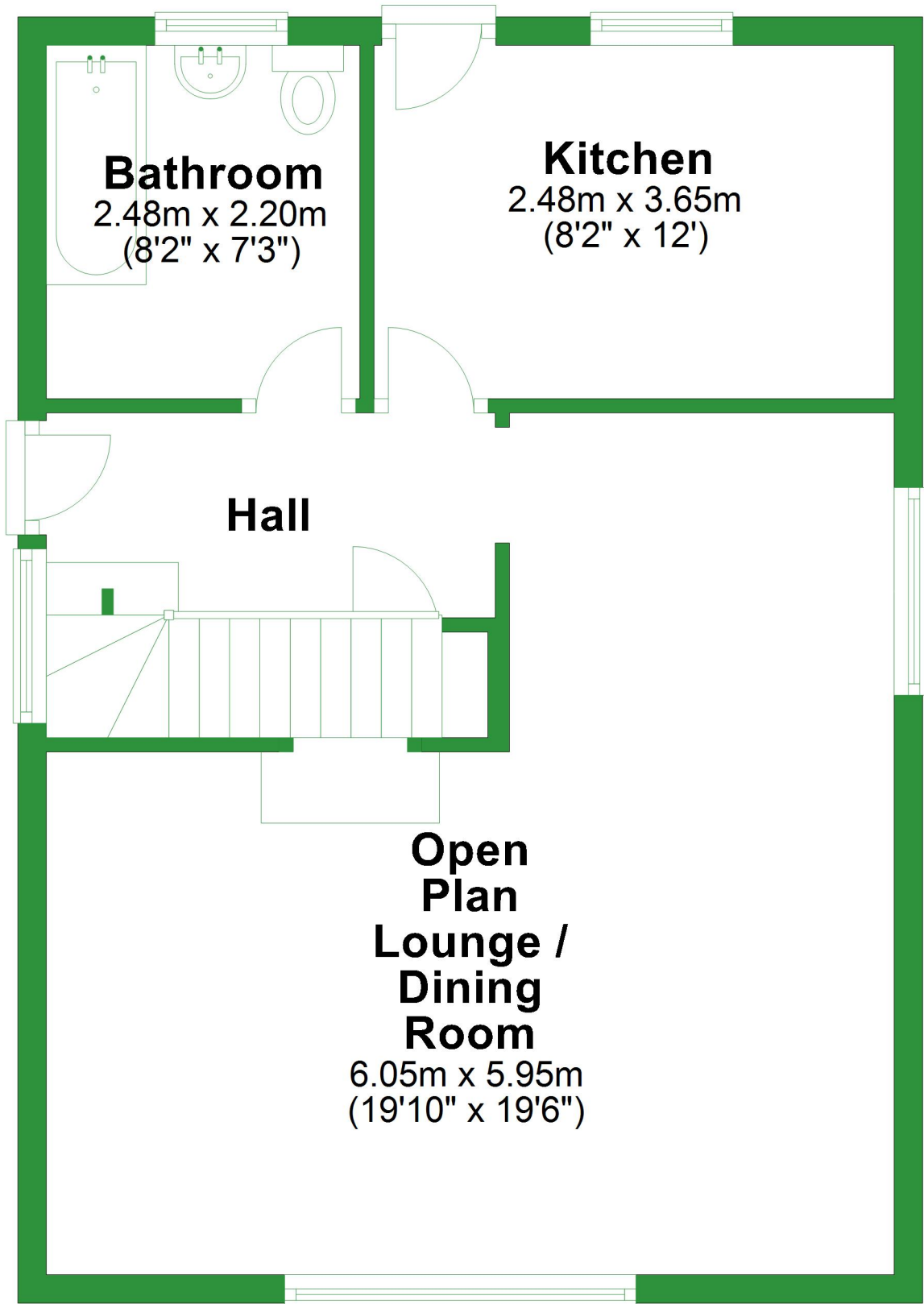


Ground Floor

Approx. 51.3 sq. metres (552.6 sq. feet)



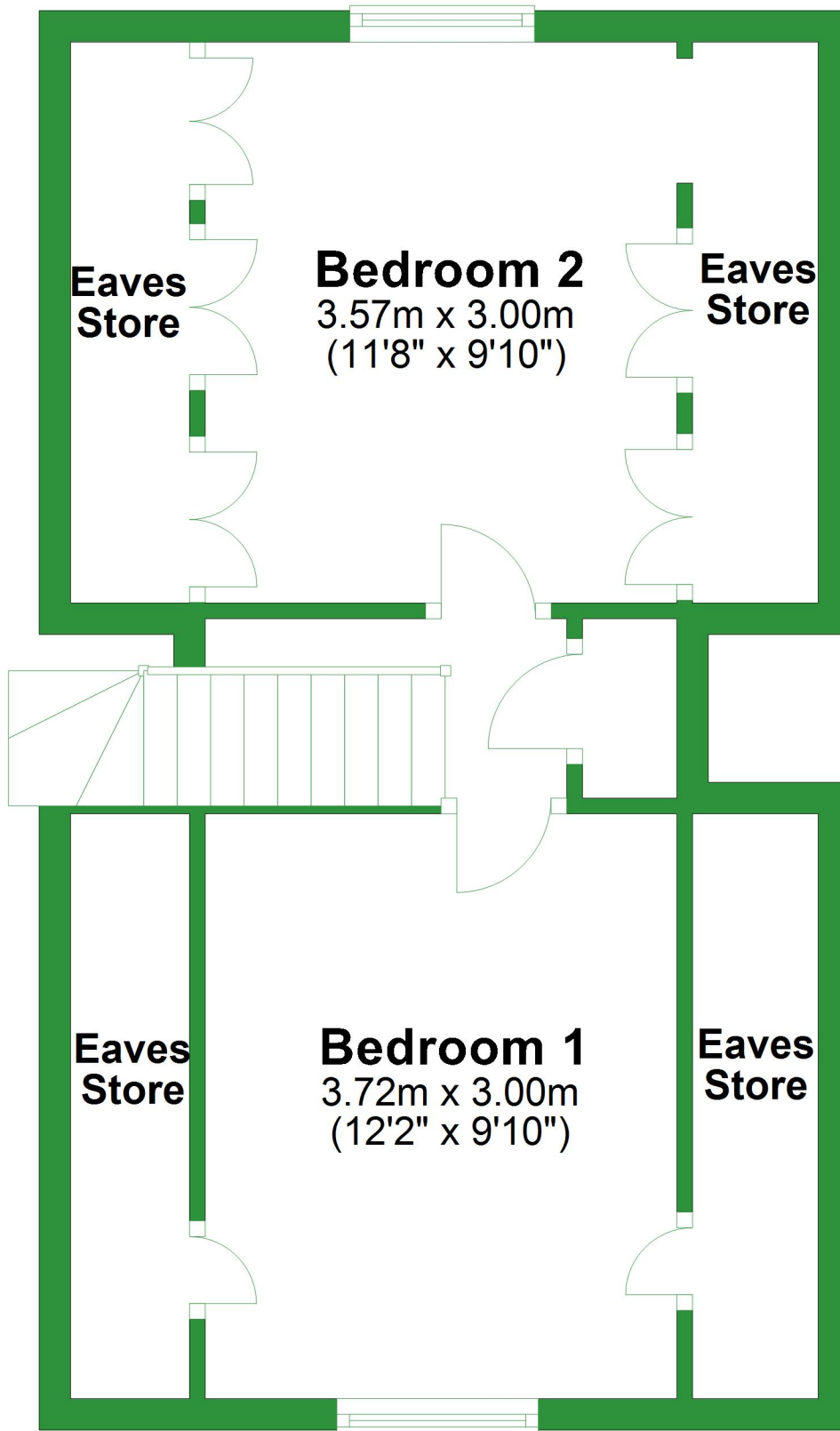
Total area: approx. 88.9 sq. metres (957.0 sq. feet)

For illustrative purposes only. Not to scale. All sizes are approximate.

Plan produced using PlanUp.

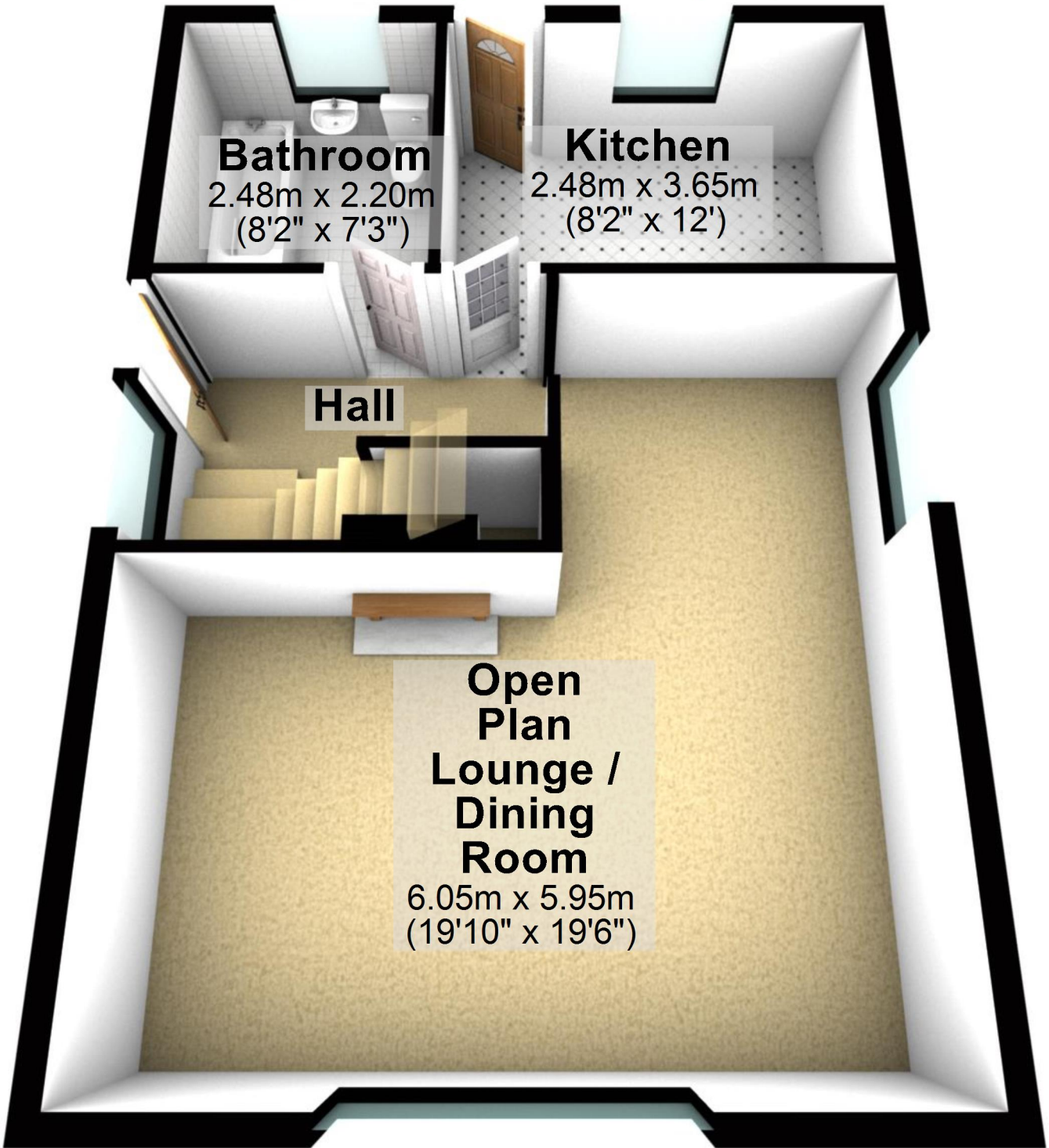
First Floor

Approx. 37.6 sq. metres (404.3 sq. feet)



Ground Floor

Approx. 51.3 sq. metres (552.6 sq. feet)



Bathroom
2.48m x 2.20m
(8'2" x 7'3")

Kitchen
2.48m x 3.65m
(8'2" x 12')

Hall

**Open
Plan
Lounge /
Dining
Room**
6.05m x 5.95m
(19'10" x 19'6")

Total area: approx. 88.9 sq. metres (957.0 sq. feet)

For illustrative purposes only. Not to scale. All sizes are approximate.

Plan produced using PlanUp.

First Floor

Approx. 37.6 sq. metres (404.3 sq. feet)

Eaves
Store

Bedroom 2
3.57m x 3.00m
(11'8" x 9'10")

Eaves
Store

Eaves
Store

Bedroom 1
3.72m x 3.00m
(12'2" x 9'10")

Eaves
Store

