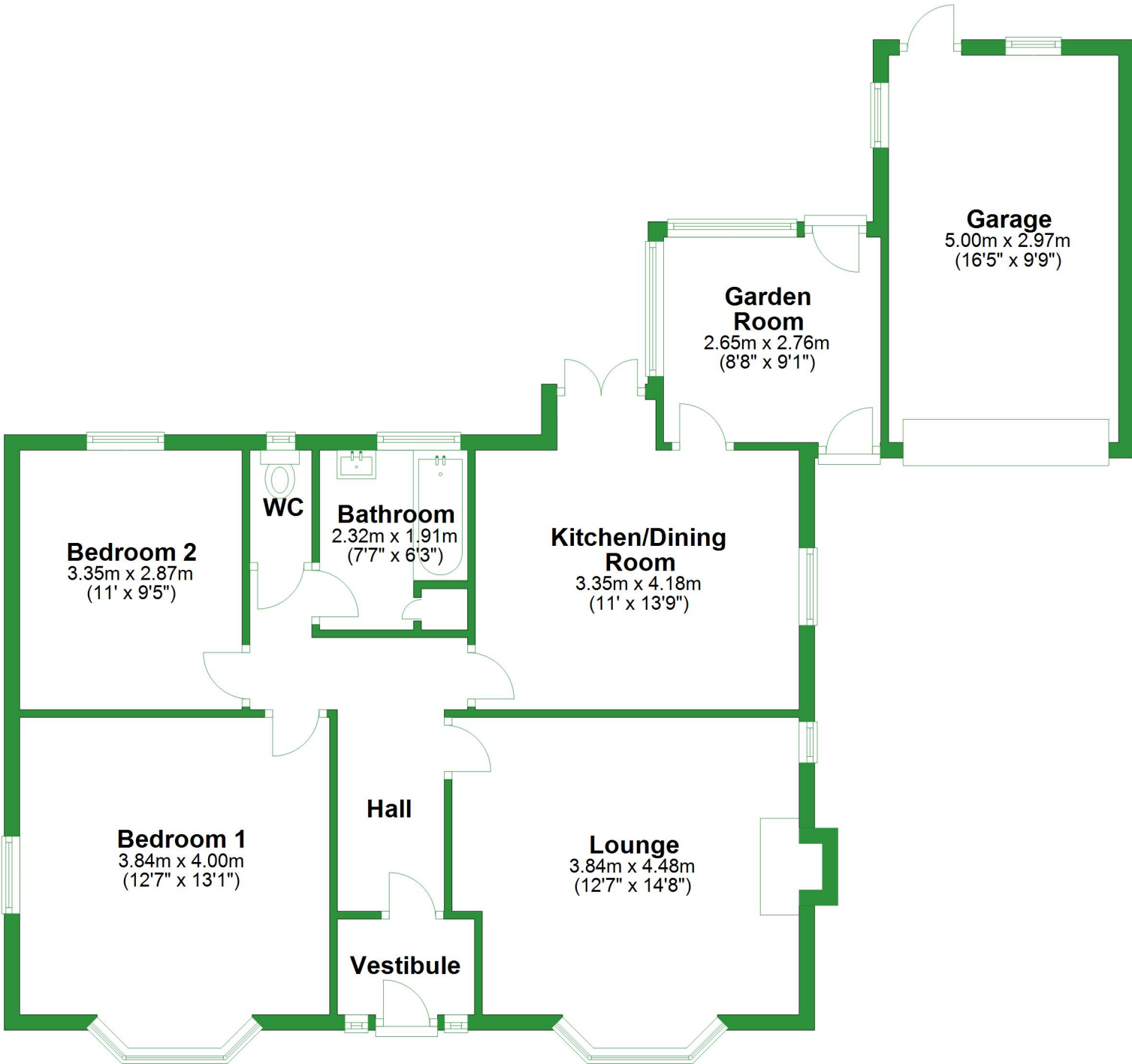


## Ground Floor

Approx. 97.3 sq. metres (1046.9 sq. feet)



Total area: approx. 111.5 sq. metres (1200.0 sq. feet)

For illustrative purposes only. Not to scale. All sizes are approximate.  
Plan produced using PlanUp.

## First Floor

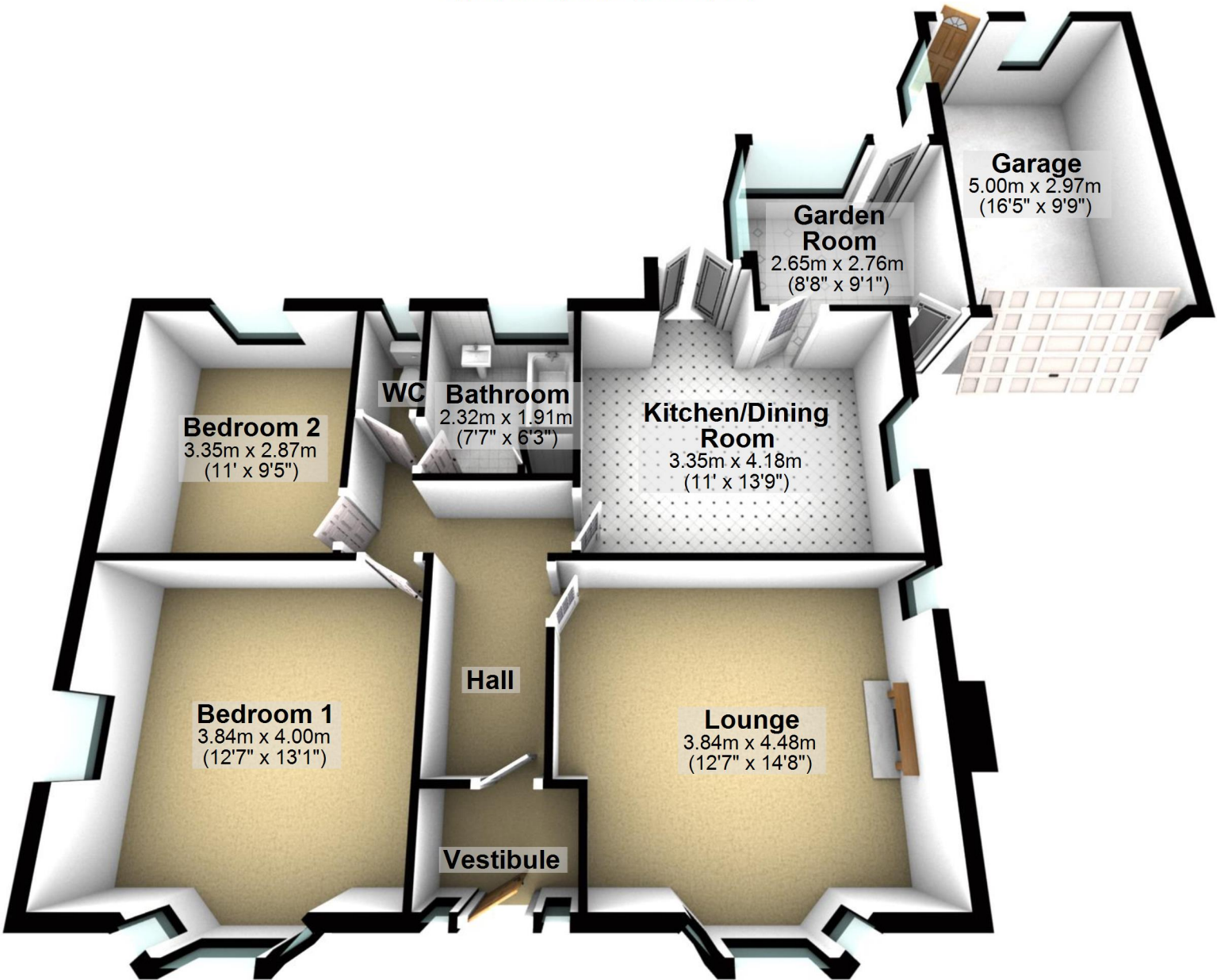
Approx. 14.2 sq. metres (153.1 sq. feet)

**Loft  
Room**  
2.60m x 4.18m  
(8'6" x 13'9")



## Ground Floor

Approx. 97.3 sq. metres (1046.9 sq. feet)



Total area: approx. 111.5 sq. metres (1200.0 sq. feet)

For illustrative purposes only. Not to scale. All sizes are approximate.  
Plan produced using PlanUp.

## First Floor

Approx. 14.2 sq. metres (153.1 sq. feet)



**Loft  
Room**  
2.60m x 4.18m  
(8'6" x 13'9")

A 3D architectural rendering of a loft room. The room is rectangular with light-colored walls and a tan carpet. A white door is open on the right side, showing a glimpse of another room. The room is framed by a thick black border. A text label is centered in the room, providing dimensions in both meters and feet.