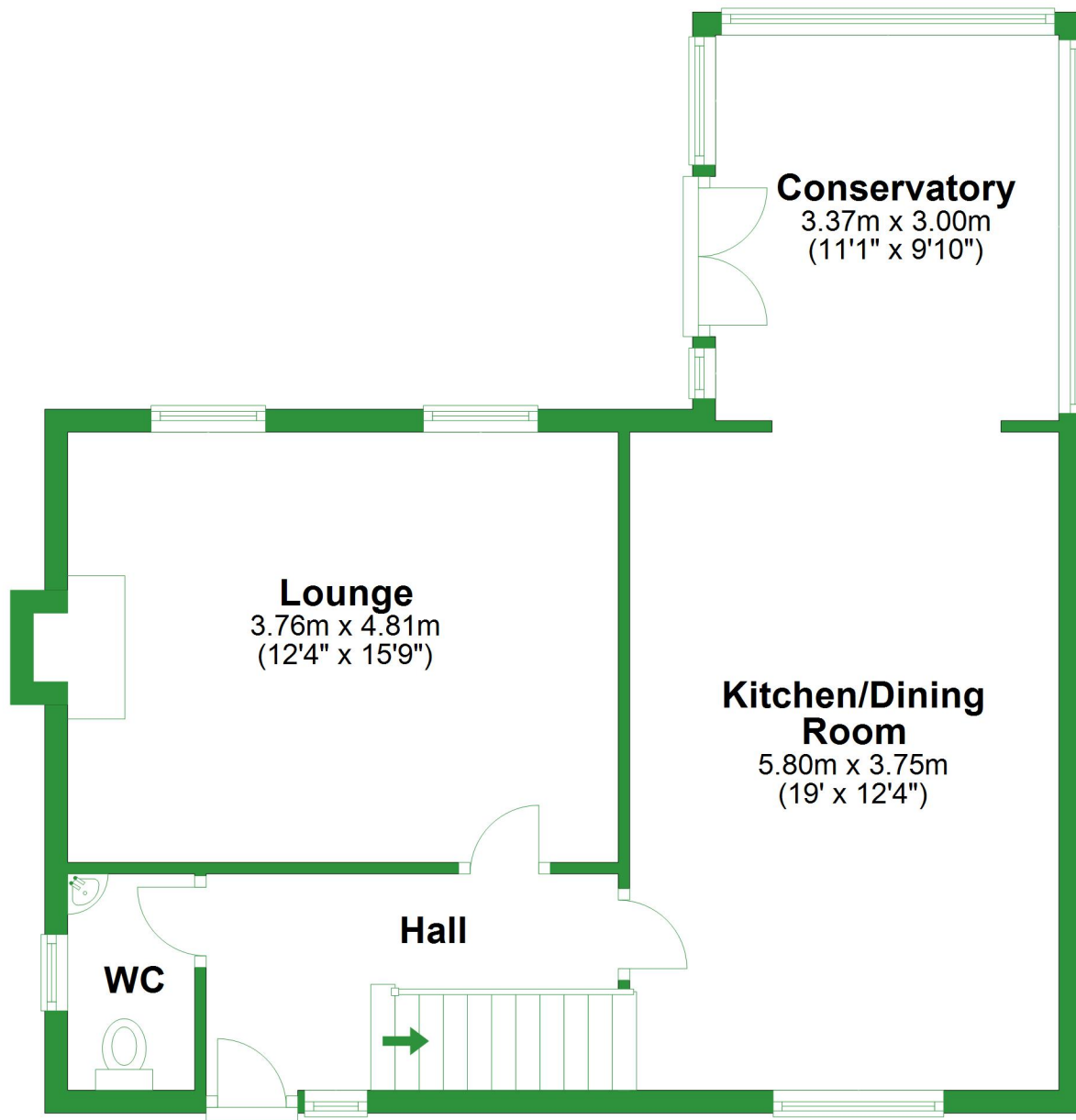


# Ground Floor

Approx. 60.2 sq. metres (648.0 sq. feet)



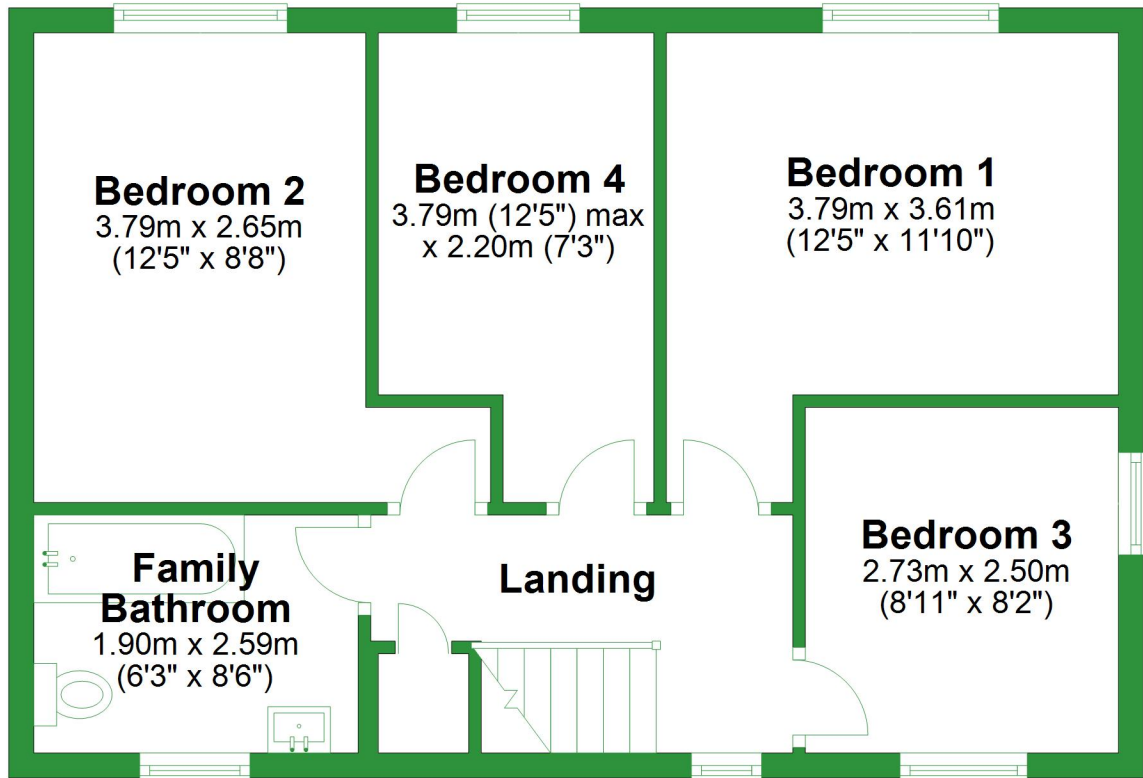
Total area: approx. 109.9 sq. metres (1183.2 sq. feet)

For illustrative purposes only. Not to scale. All sizes are approximate.

Plan produced using PlanUp.

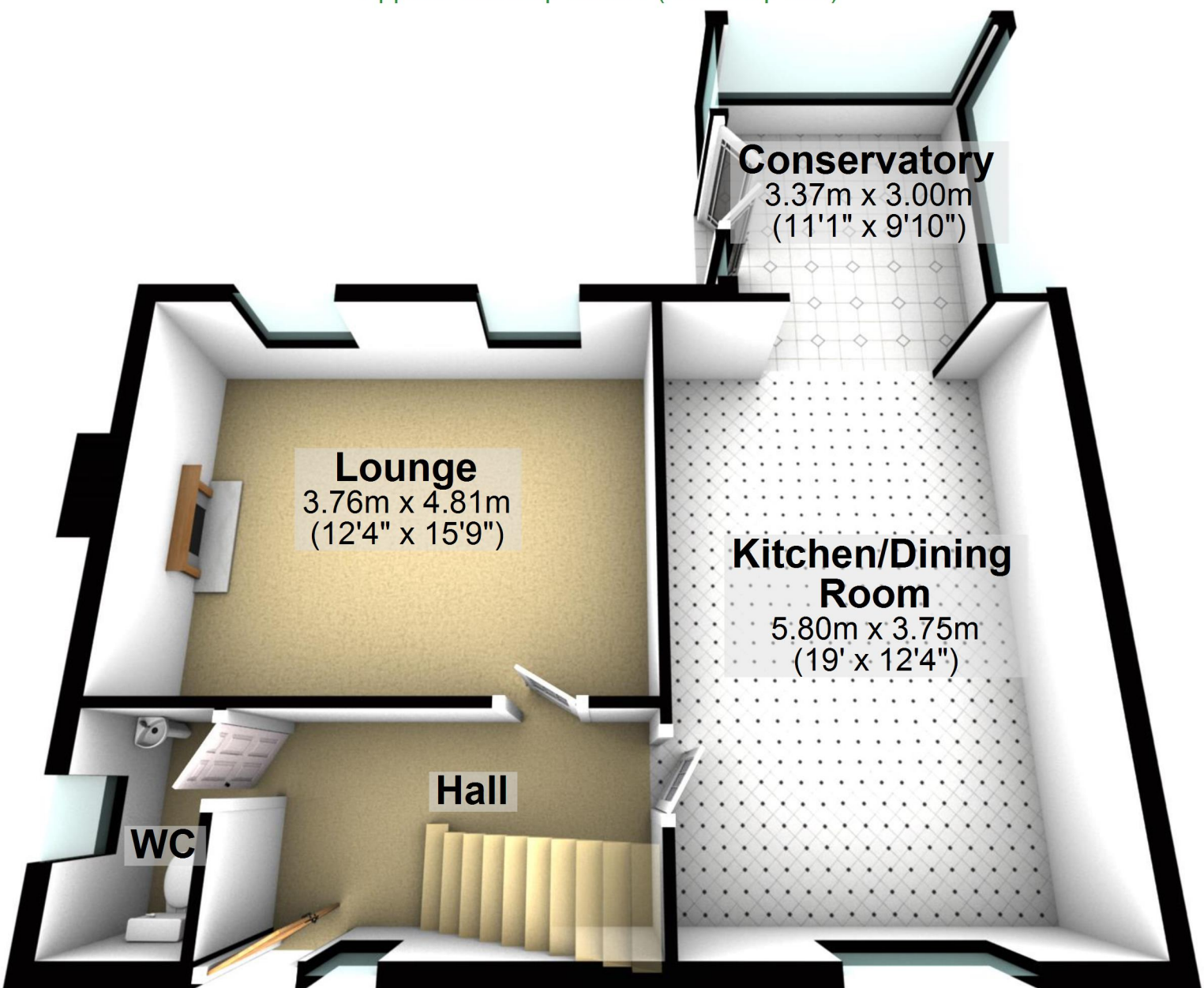
# First Floor

Approx. 49.7 sq. metres (535.2 sq. feet)



## Ground Floor

Approx. 60.2 sq. metres (648.0 sq. feet)



Total area: approx. 109.9 sq. metres (1183.2 sq. feet)

For illustrative purposes only. Not to scale. All sizes are approximate.  
Plan produced using PlanUp.

# First Floor

Approx. 49.7 sq. metres (535.2 sq. feet)

**Bedroom 2**  
3.79m x 2.65m  
(12'5" x 8'8")

**Bedroom 4**  
3.79m (12'5") max  
x 2.20m (7'3")

**Bedroom 1**  
3.79m x 3.61m  
(12'5" x 11'10")

**Family  
Bathroom**  
1.90m x 2.59m  
(6'3" x 8'6")

**Landing**

**Bedroom 3**  
2.73m x 2.50m  
(8'11" x 8'2")

