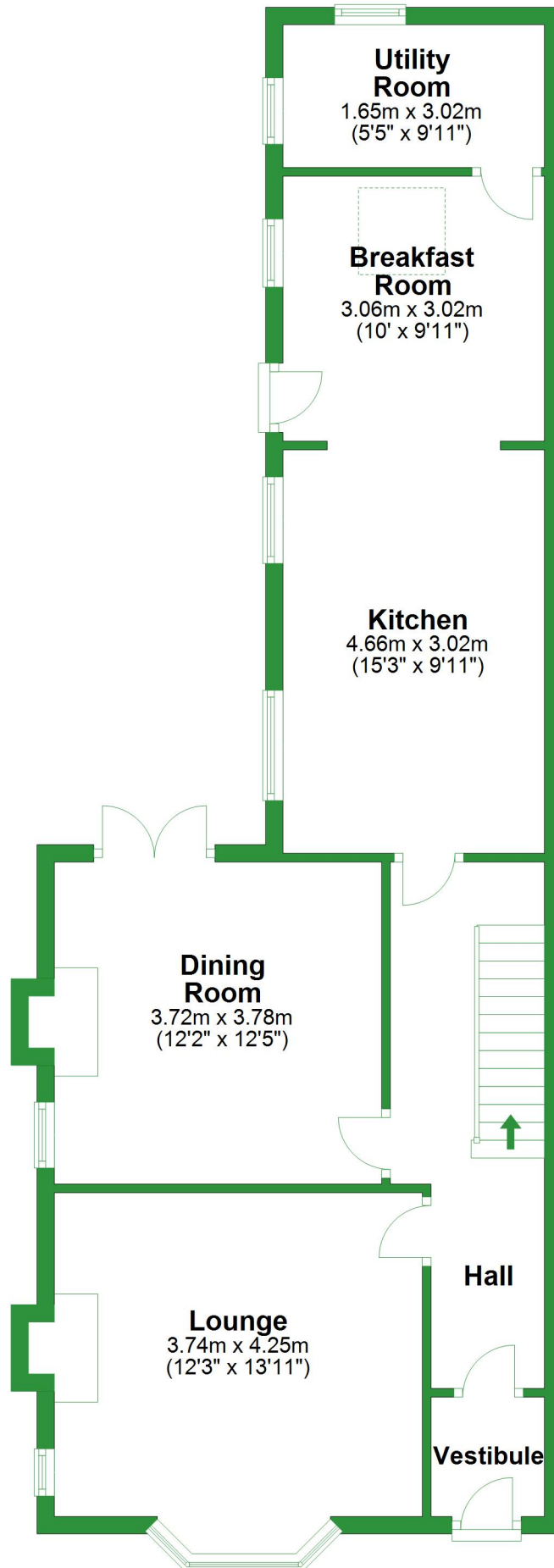


Ground Floor

Approx. 72.3 sq. metres (777.7 sq. feet)

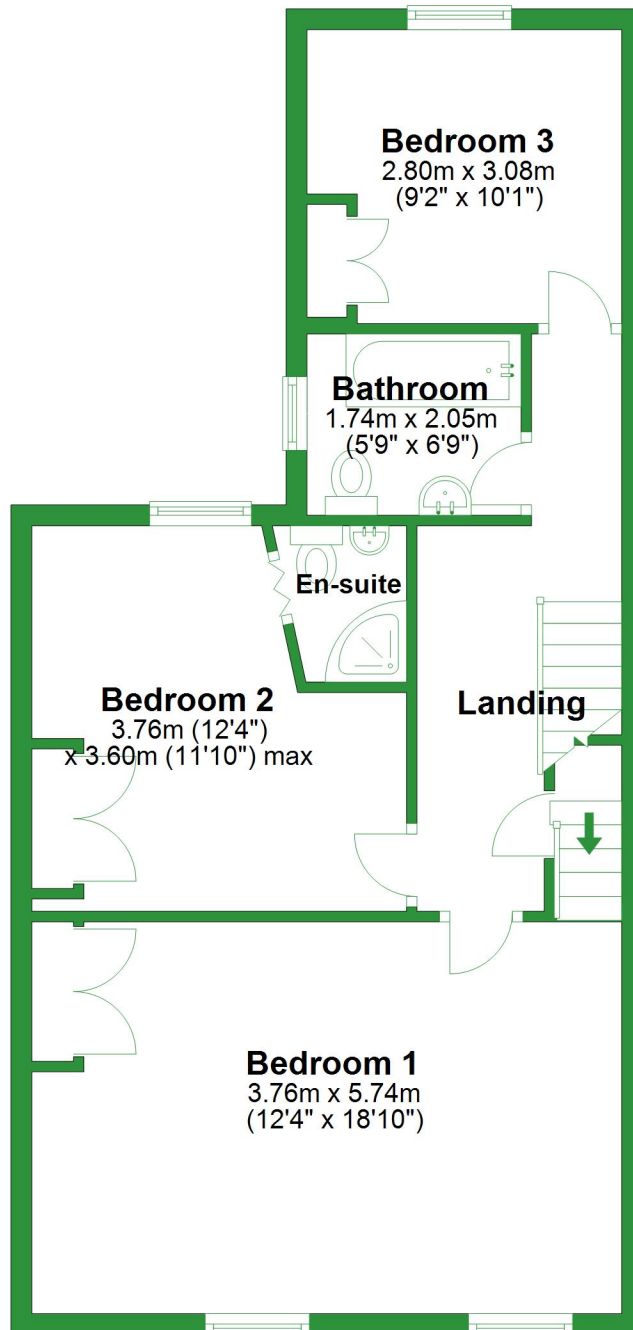


Total area: approx. 152.4 sq. metres (1640.7 sq. feet)

For illustrative purposes only. Not to scale. All sizes are approximate.
Plan produced using PlanUp.

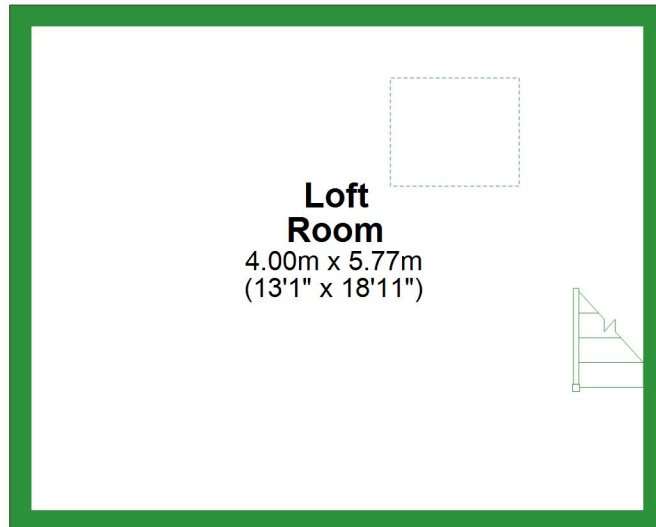
First Floor

Approx. 57.1 sq. metres (614.6 sq. feet)



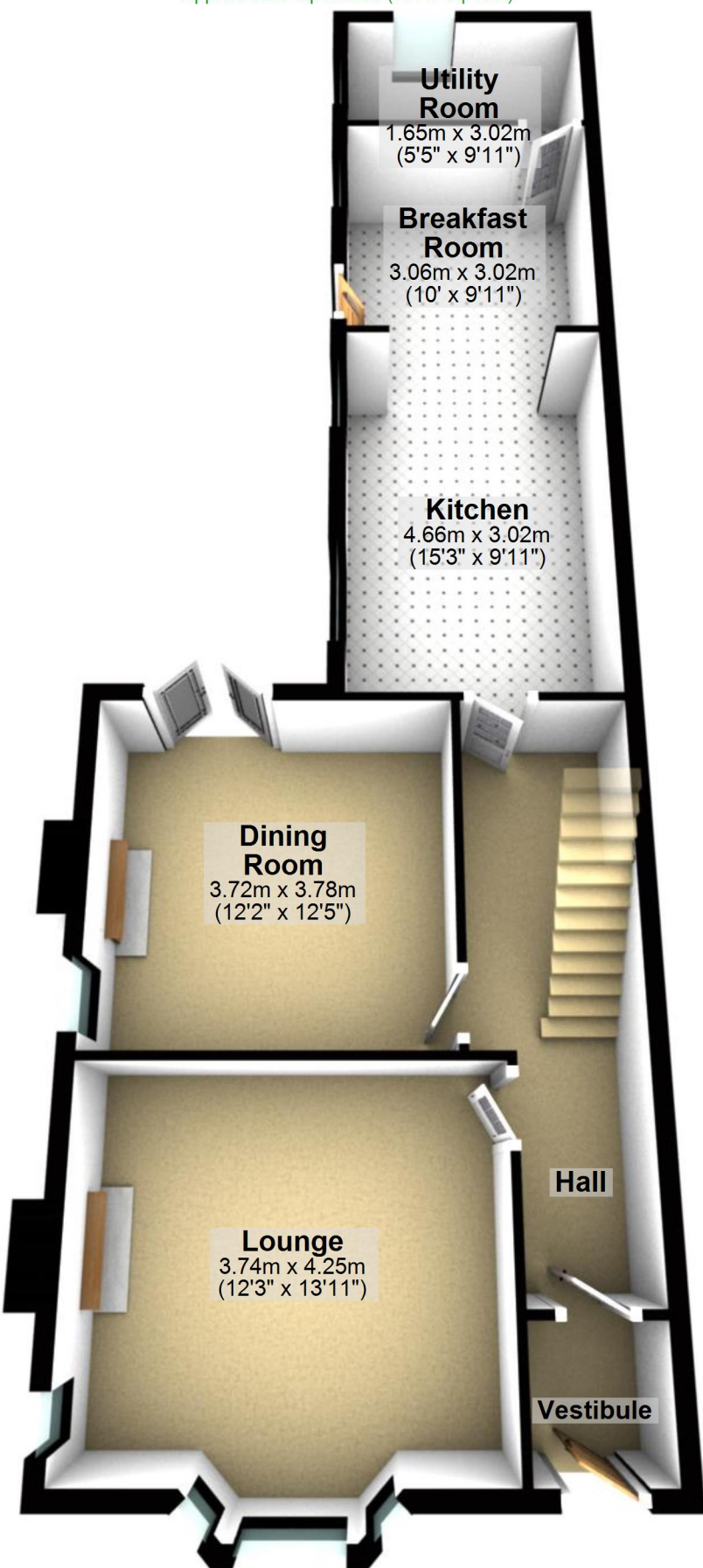
Second Floor

Approx. 23.1 sq. metres (248.4 sq. feet)



Ground Floor

Approx. 72.3 sq. metres (777.7 sq. feet)



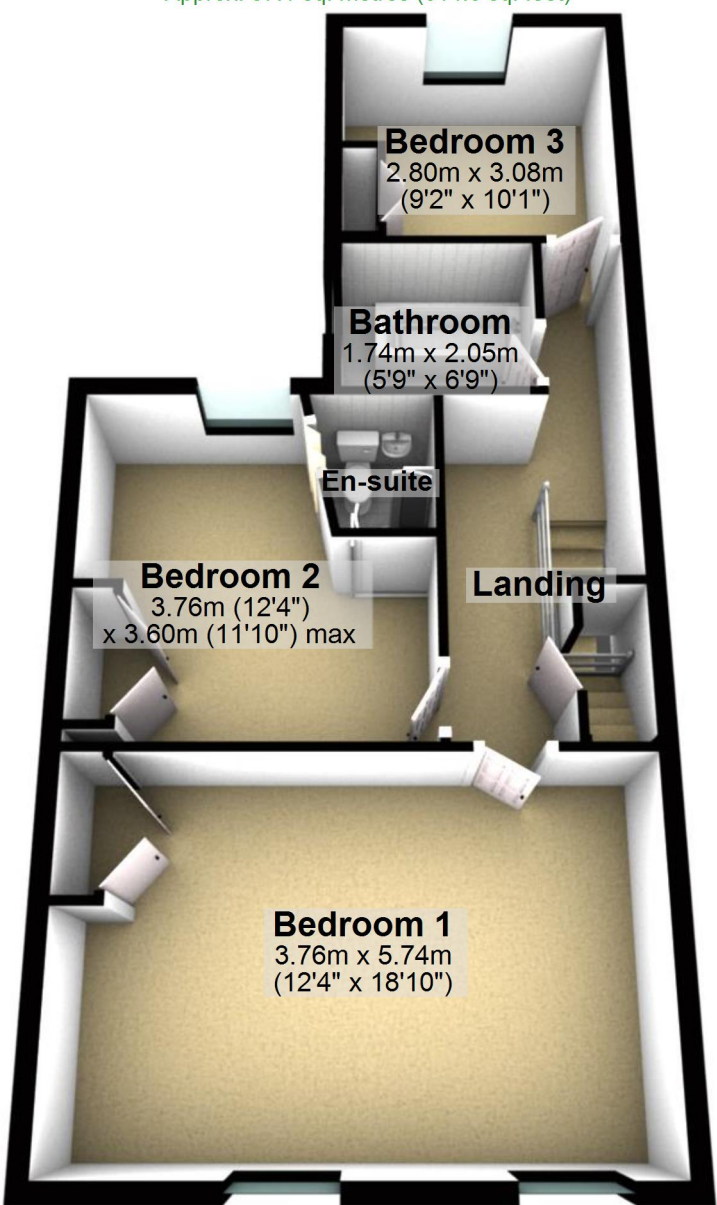
Total area: approx. 152.4 sq. metres (1640.7 sq. feet)

For illustrative purposes only. Not to scale. All sizes are approximate.

Plan produced using PlanUp.

First Floor

Approx. 57.1 sq. metres (614.6 sq. feet)



Second Floor

Approx. 23.1 sq. metres (248.4 sq. feet)

A 3D architectural rendering of a loft room. The room has a light brown carpeted floor and white walls. A staircase with a metal railing is located on the right side of the room. The room is framed by a thick black border.

**Loft
Room**
4.00m x 5.77m
(13'1" x 18'11")