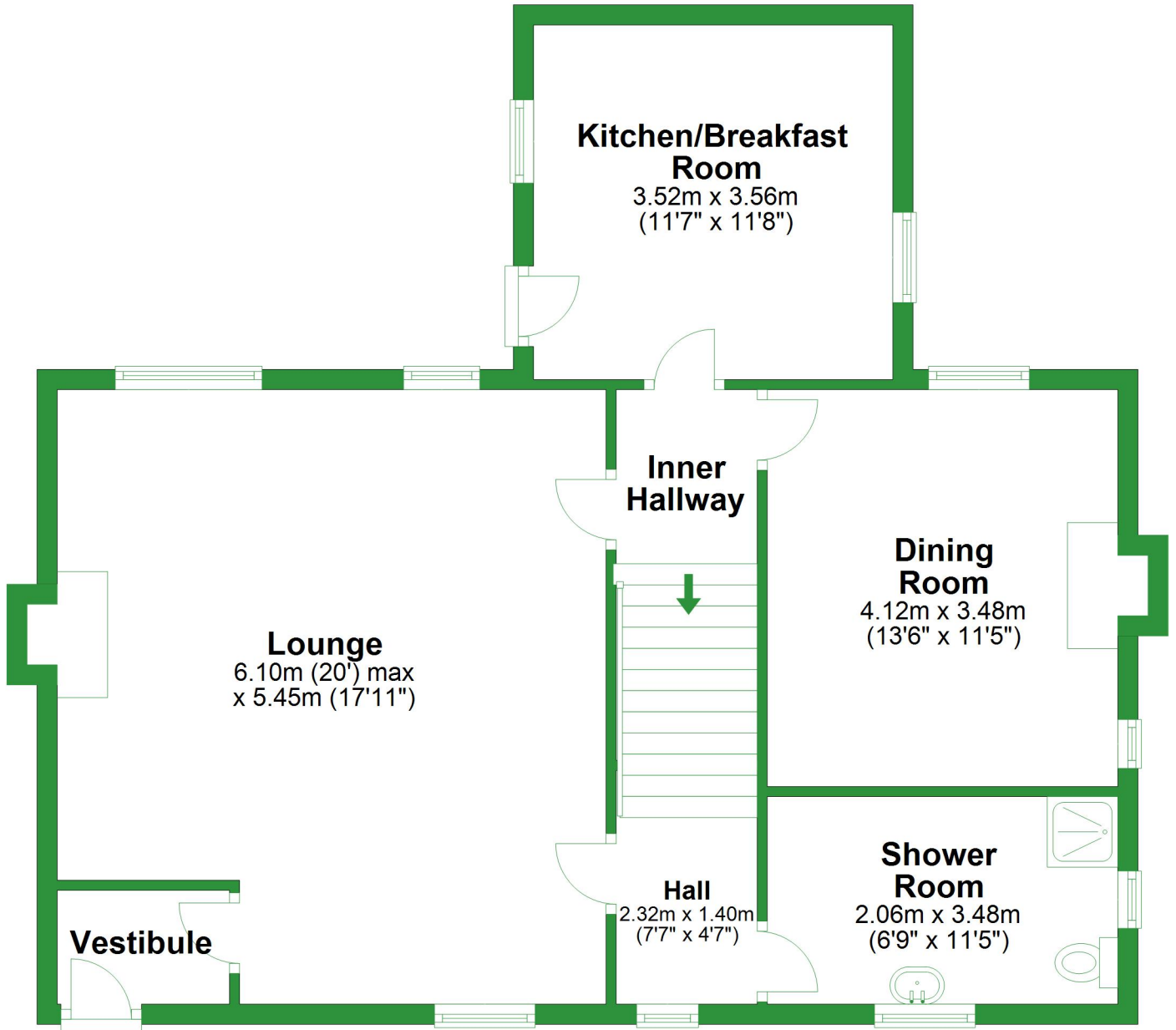


# Ground Floor

Approx. 77.1 sq. metres (830.1 sq. feet)



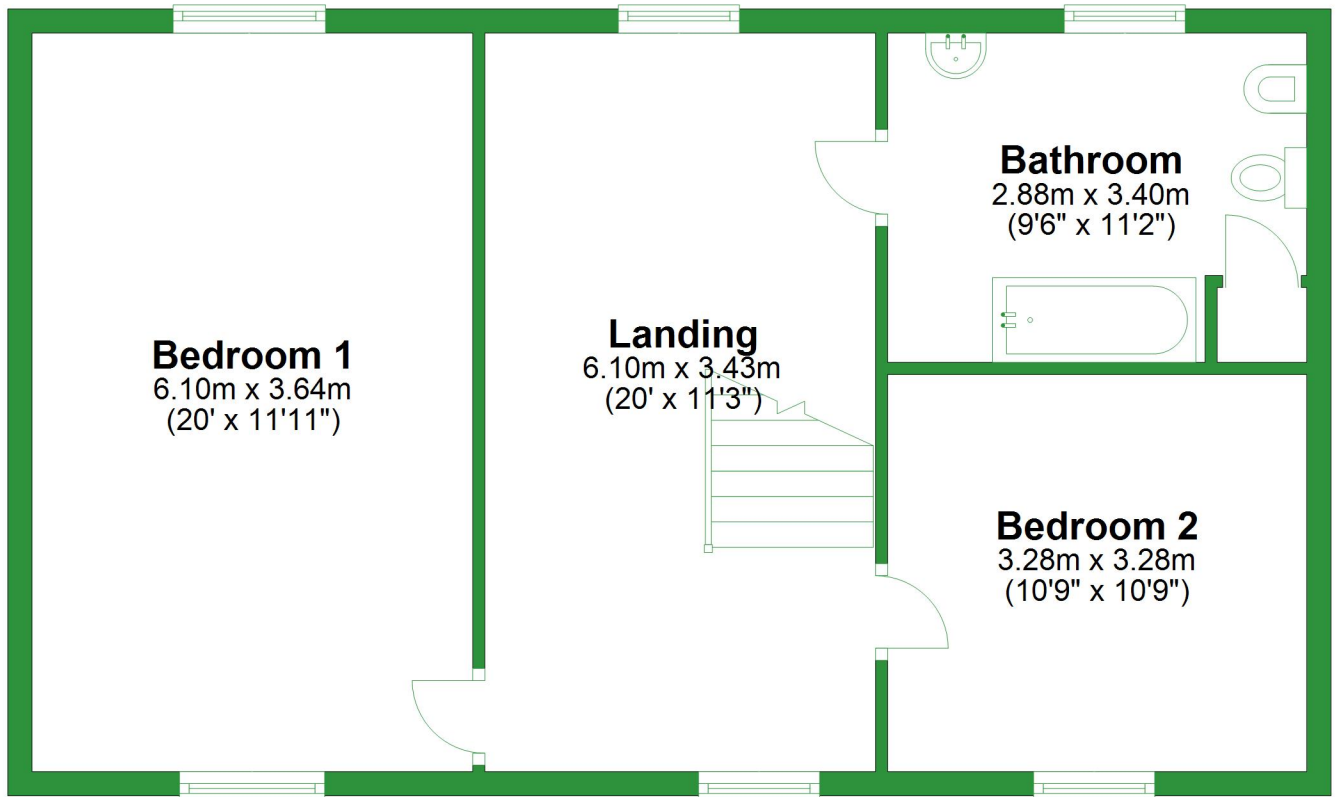
Total area: approx. 141.3 sq. metres (1521.4 sq. feet)

For illustrative purposes only. Not to scale. All sizes are approximate.

Plan produced using PlanUp.

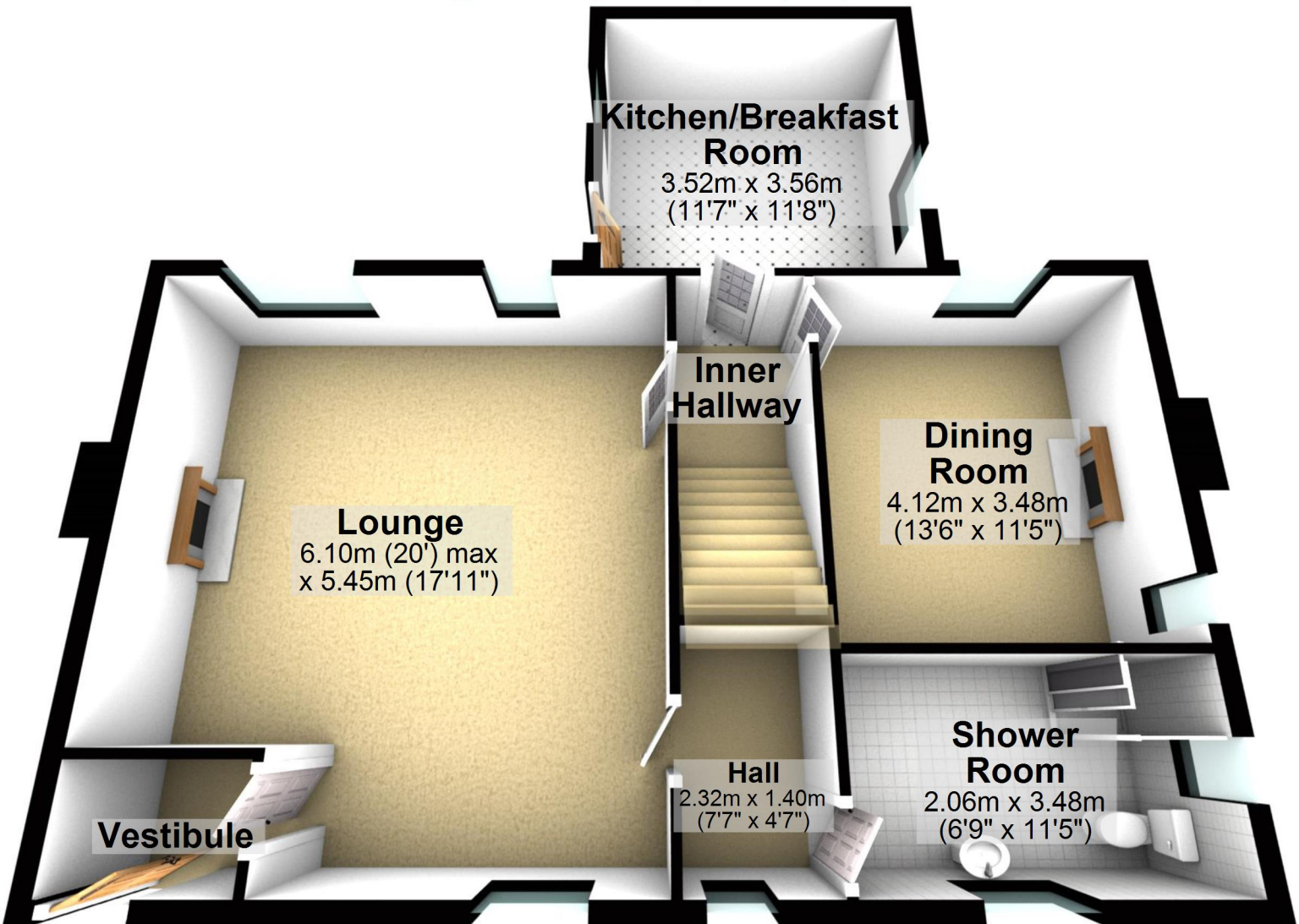
## First Floor

Approx. 64.2 sq. metres (691.3 sq. feet)



## Ground Floor

Approx. 77.1 sq. metres (830.1 sq. feet)



Total area: approx. 141.3 sq. metres (1521.4 sq. feet)

For illustrative purposes only. Not to scale. All sizes are approximate.

Plan produced using PlanUp.

## First Floor

Approx. 64.2 sq. metres (691.3 sq. feet)

**Bedroom 1**  
6.10m x 3.64m  
(20' x 11'11")

**Landing**  
6.10m x 3.43m  
(20' x 11'3")

**Bathroom**  
2.88m x 3.40m  
(9'6" x 11'2")

**Bedroom 2**  
3.28m x 3.28m  
(10'9" x 10'9")

