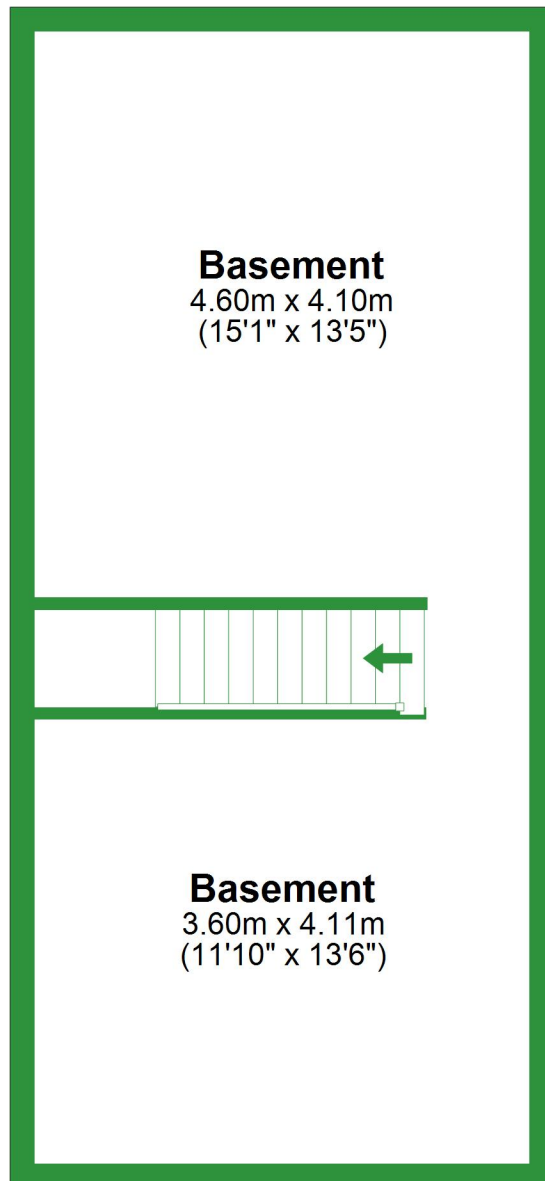


## Basement

Approx. 37.4 sq. metres (402.4 sq. feet)

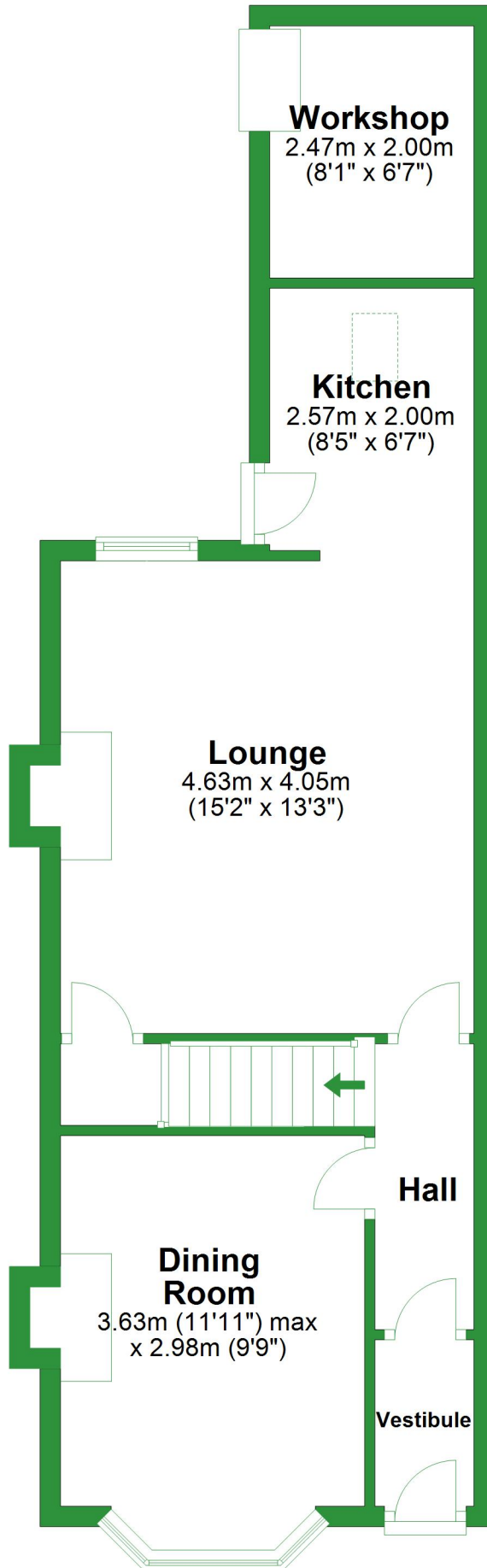


Total area: approx. 119.4 sq. metres (1284.8 sq. feet)

For illustrative purposes only. Not to scale. All sizes are approximate.  
Plan produced using PlanUp.

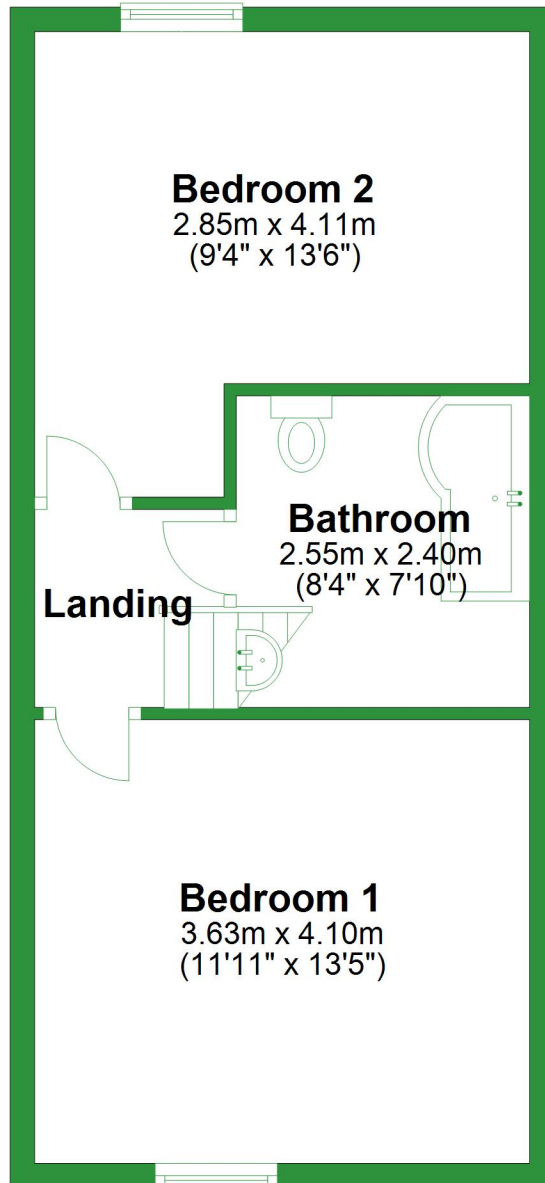
# Ground Floor

Approx. 48.2 sq. metres (519.3 sq. feet)



## First Floor

Approx. 33.7 sq. metres (363.2 sq. feet)



## Basement

Approx. 37.4 sq. metres (402.4 sq. feet)

### Basement

4.60m x 4.10m  
(15'1" x 13'5")

### Basement

3.60m x 4.11m  
(11'10" x 13'6")

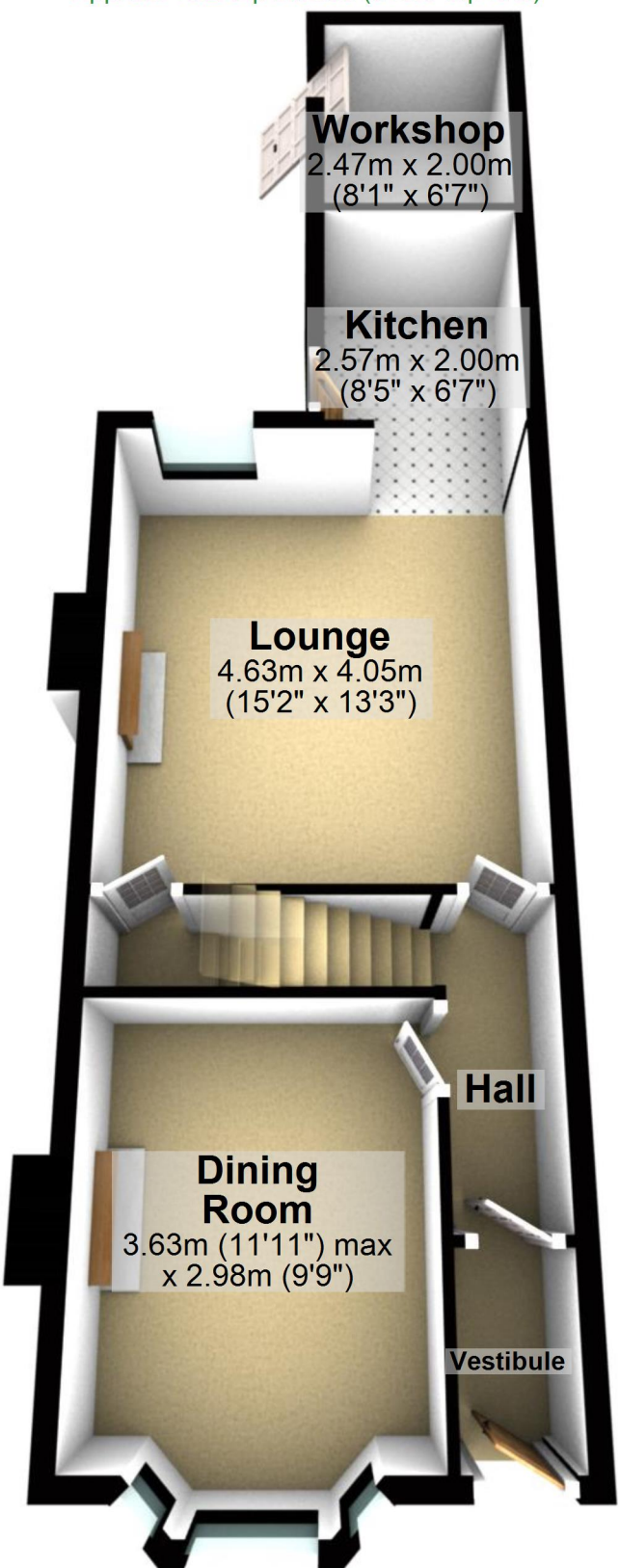
Total area: approx. 119.4 sq. metres (1284.8 sq. feet)

For illustrative purposes only. Not to scale. All sizes are approximate.

Plan produced using PlanUp.

## Ground Floor

Approx. 48.2 sq. metres (519.3 sq. feet)



## First Floor

Approx. 33.7 sq. metres (363.2 sq. feet)

