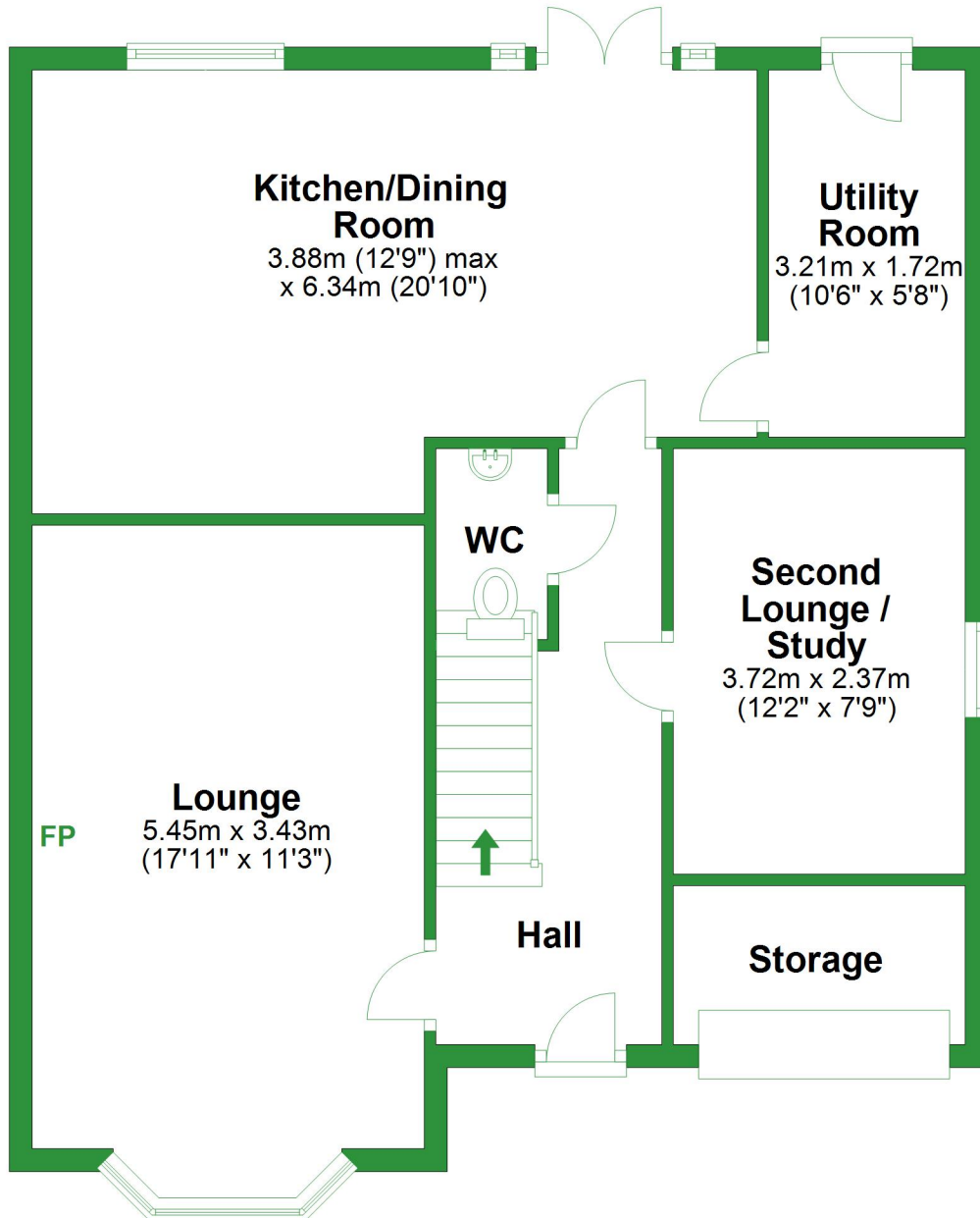


# Ground Floor

Approx. 72.9 sq. metres (784.7 sq. feet)



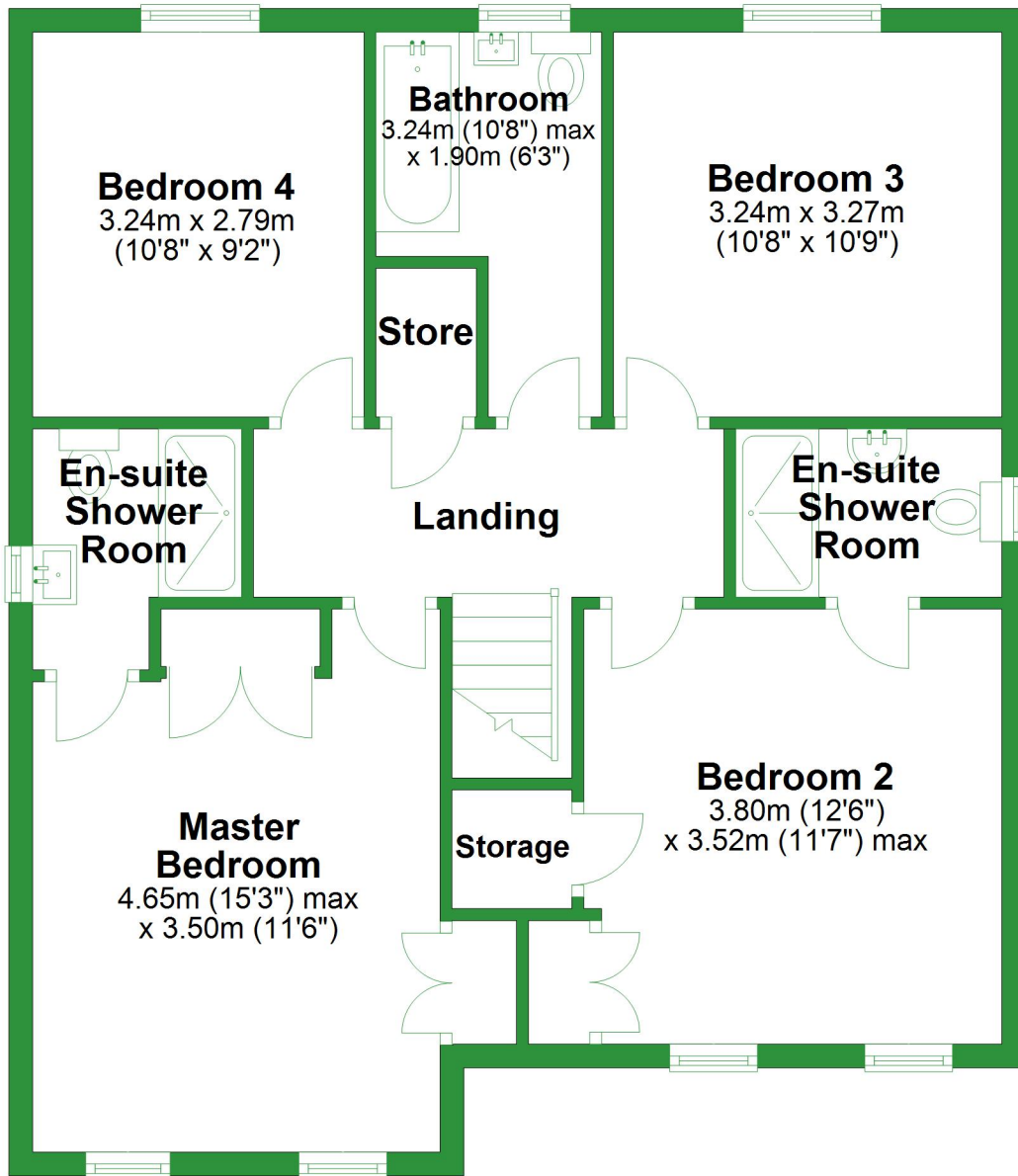
Total area: approx. 145.5 sq. metres (1566.1 sq. feet)

For illustrative purposes only. Not to scale. All sizes are approximate.

Plan produced using PlanUp.

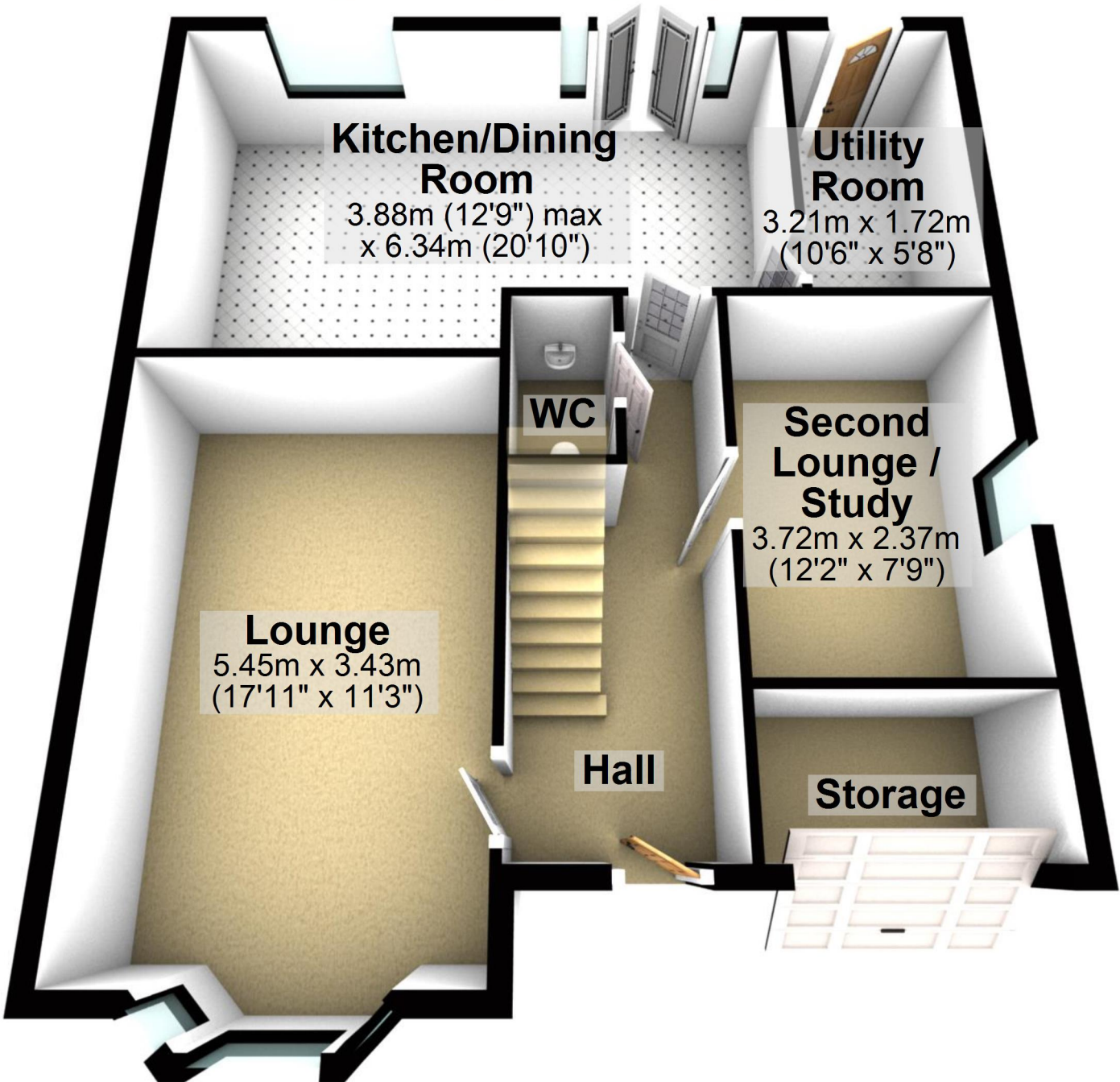
# First Floor

Approx. 72.6 sq. metres (781.4 sq. feet)



## Ground Floor

Approx. 72.9 sq. metres (784.7 sq. feet)



**Kitchen/Dining Room**

3.88m (12'9") max  
x 6.34m (20'10")

**Utility Room**

3.21m x 1.72m  
(10'6" x 5'8")

**WC**

**Second Lounge / Study**

3.72m x 2.37m  
(12'2" x 7'9")

**Lounge**

5.45m x 3.43m  
(17'11" x 11'3")

**Hall**

**Storage**

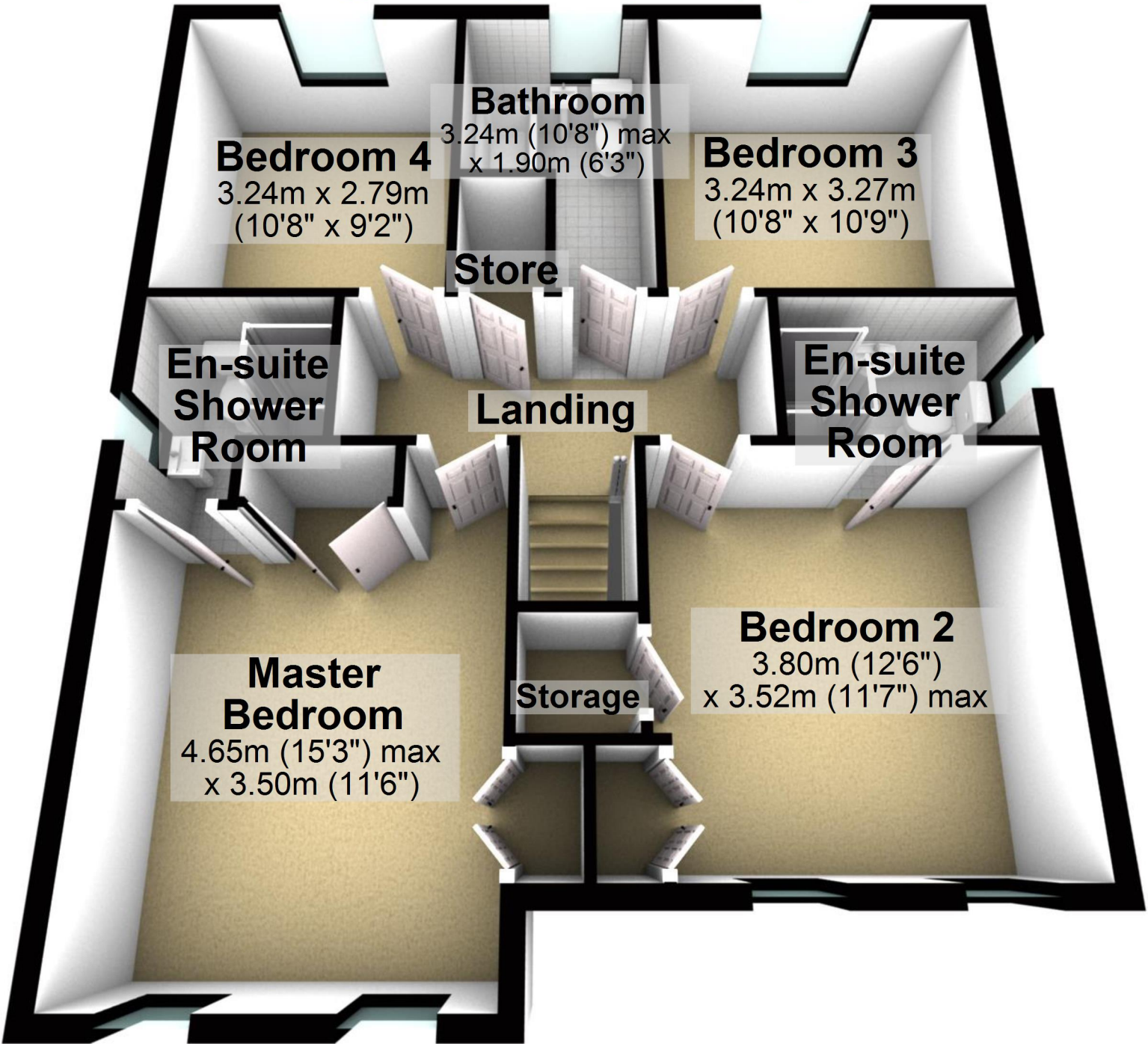
Total area: approx. 145.5 sq. metres (1566.1 sq. feet)

For illustrative purposes only. Not to scale. All sizes are approximate.

Plan produced using PlanUp.

# First Floor

Approx. 72.6 sq. metres (781.4 sq. feet)



**Bedroom 4**  
3.24m x 2.79m  
(10'8" x 9'2")

**Bathroom**  
3.24m (10'8") max  
x 1.90m (6'3")

**Bedroom 3**  
3.24m x 3.27m  
(10'8" x 10'9")

**Store**

**En-suite  
Shower  
Room**

**Landing**

**En-suite  
Shower  
Room**

**Master  
Bedroom**  
4.65m (15'3") max  
x 3.50m (11'6")

**Storage**

**Bedroom 2**  
3.80m (12'6")  
x 3.52m (11'7") max