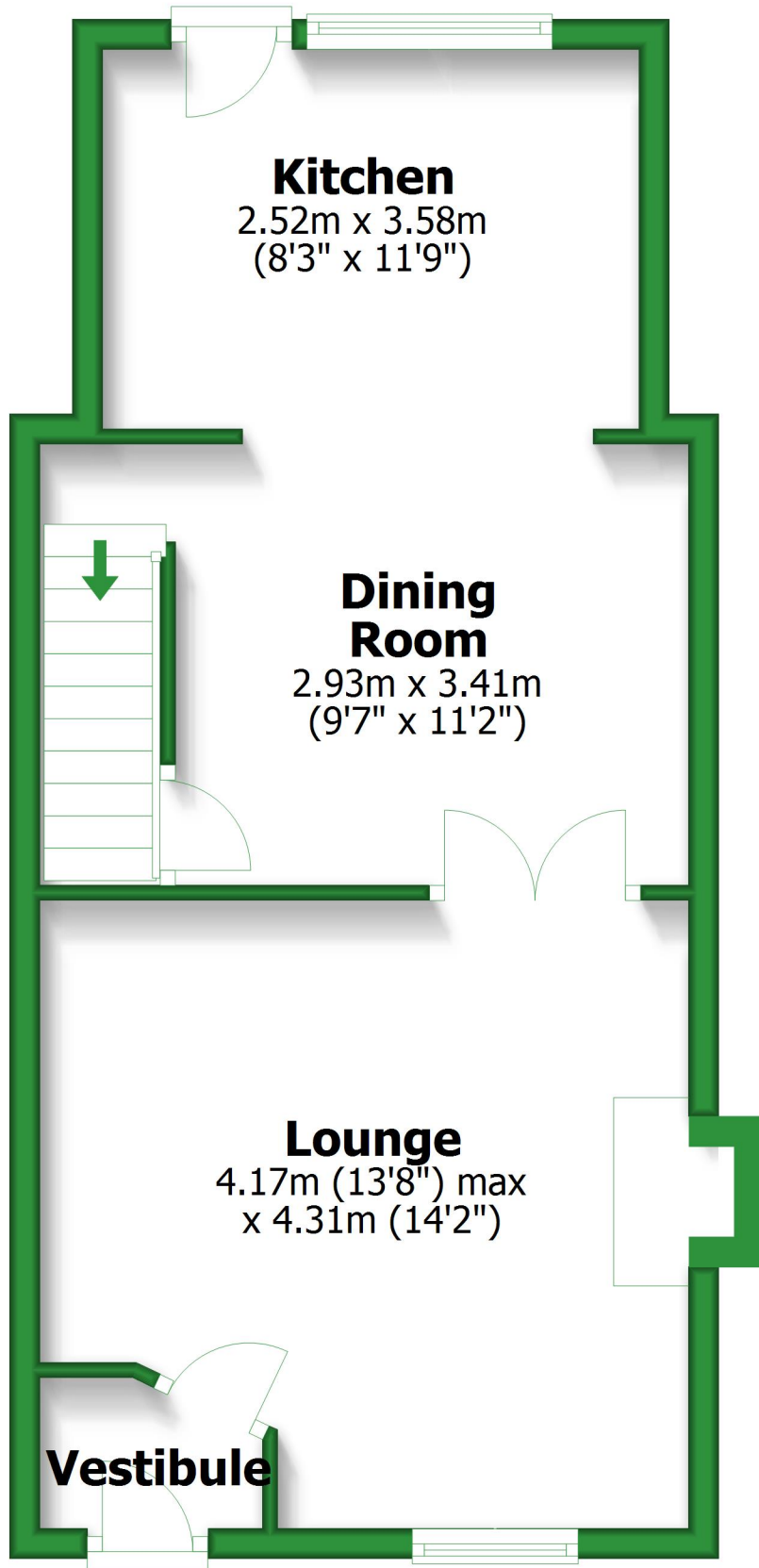


Ground Floor

Approx. 40.4 sq. metres (435.0 sq. feet)

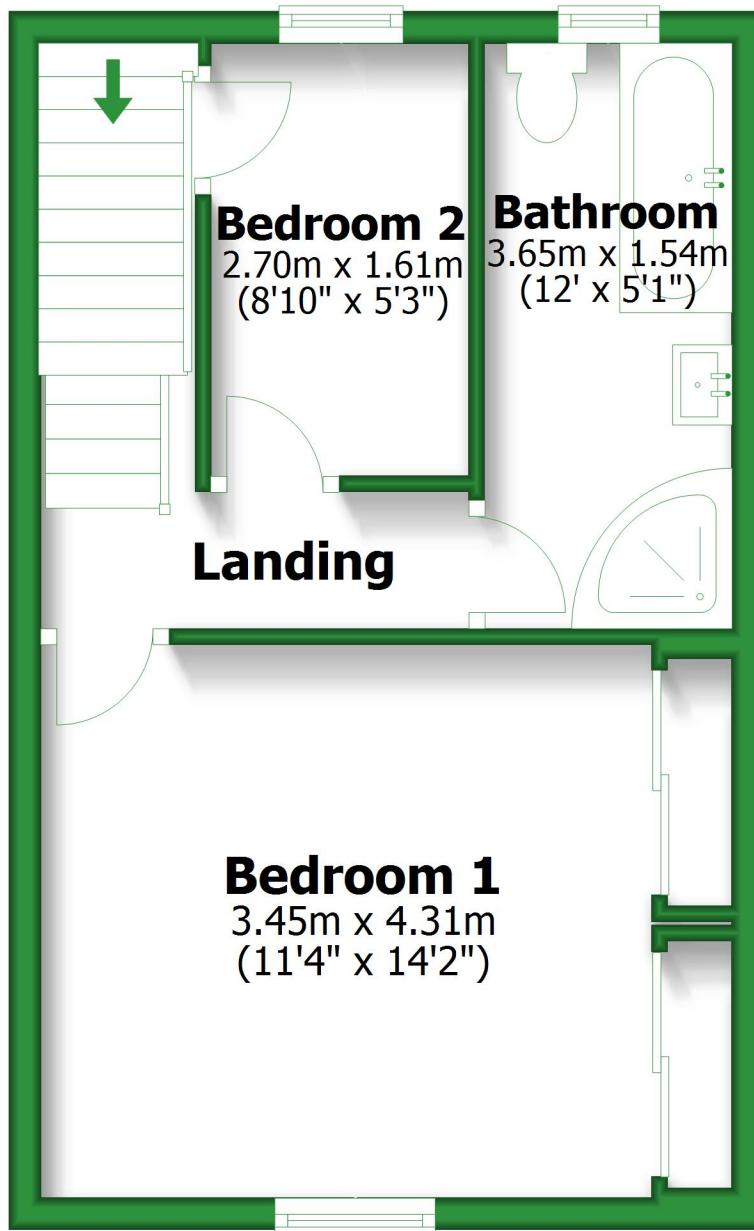


Total area: approx. 86.8 sq. metres (934.0 sq. feet)

For illustrative purposes only. Not to scale. All sizes are approximate.
Plan produced using PlanUp.

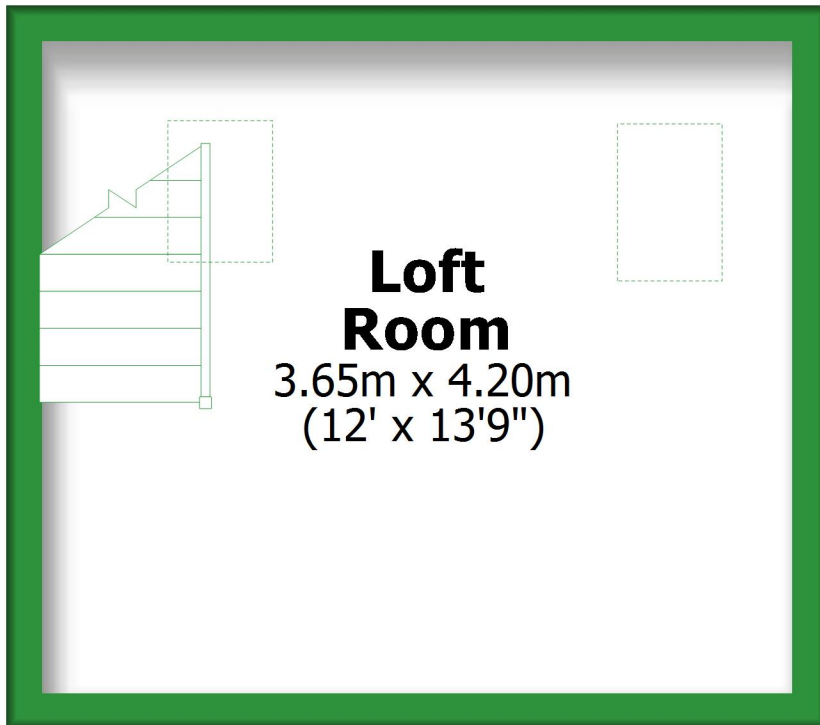
First Floor

Approx. 31.0 sq. metres (334.0 sq. feet)



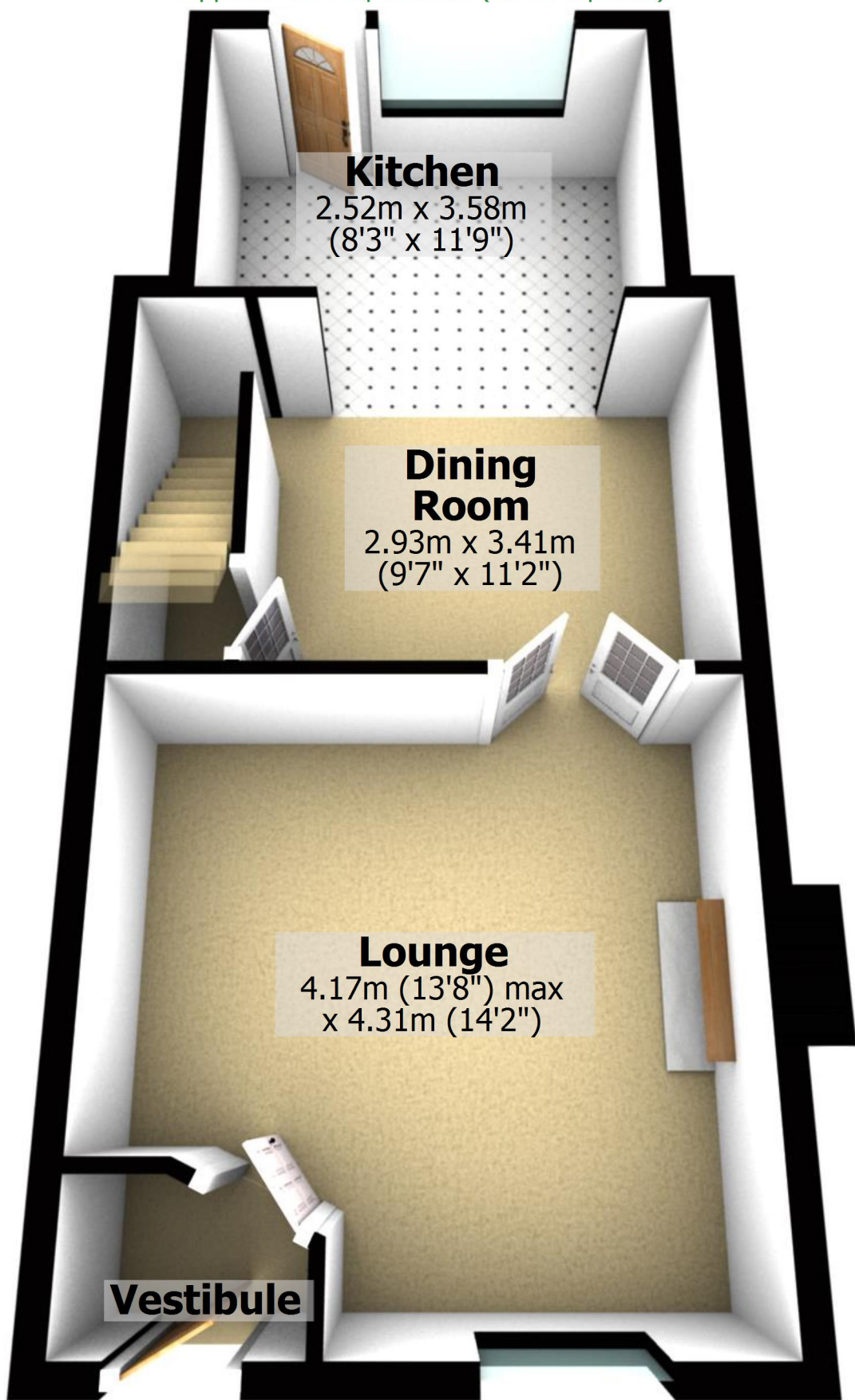
Second Floor

Approx. 15.3 sq. metres (165.0 sq. feet)



Ground Floor

Approx. 40.4 sq. metres (435.0 sq. feet)



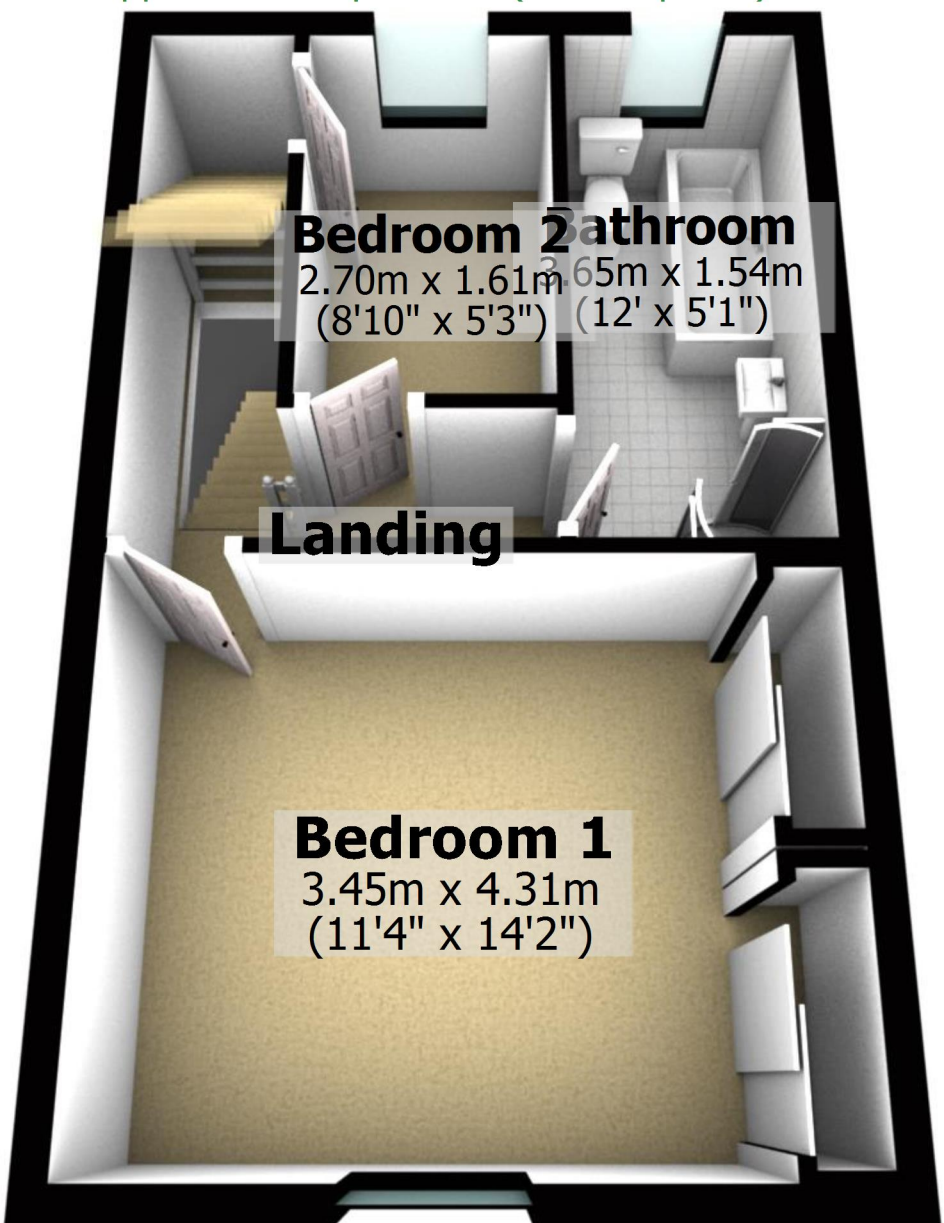
Total area: approx. 86.8 sq. metres (934.0 sq. feet)

For illustrative purposes only. Not to scale. All sizes are approximate.

Plan produced using PlanUp.

First Floor

Approx. 31.0 sq. metres (334.0 sq. feet)



Second Floor

Approx. 15.3 sq. metres (165.0 sq. feet)

A 3D architectural rendering of a loft room. The room has a light-colored carpet and white walls. On the left side, there is a staircase with a white railing leading up. A text overlay is positioned in the center of the room.

Loft Room

3.65m x 4.20m
(12' x 13'9")