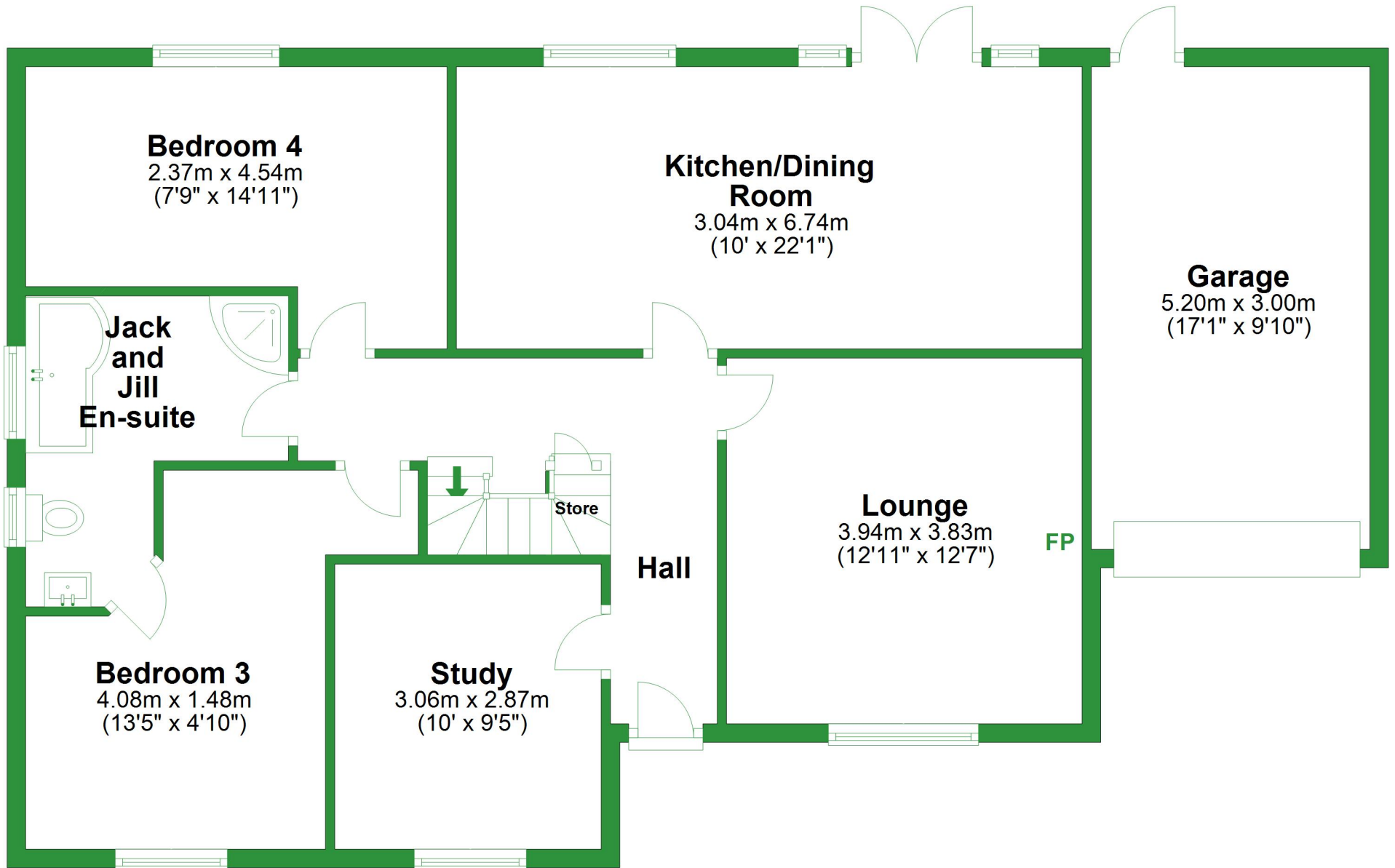


# Ground Floor

Approx. 105.0 sq. metres (1130.6 sq. feet)



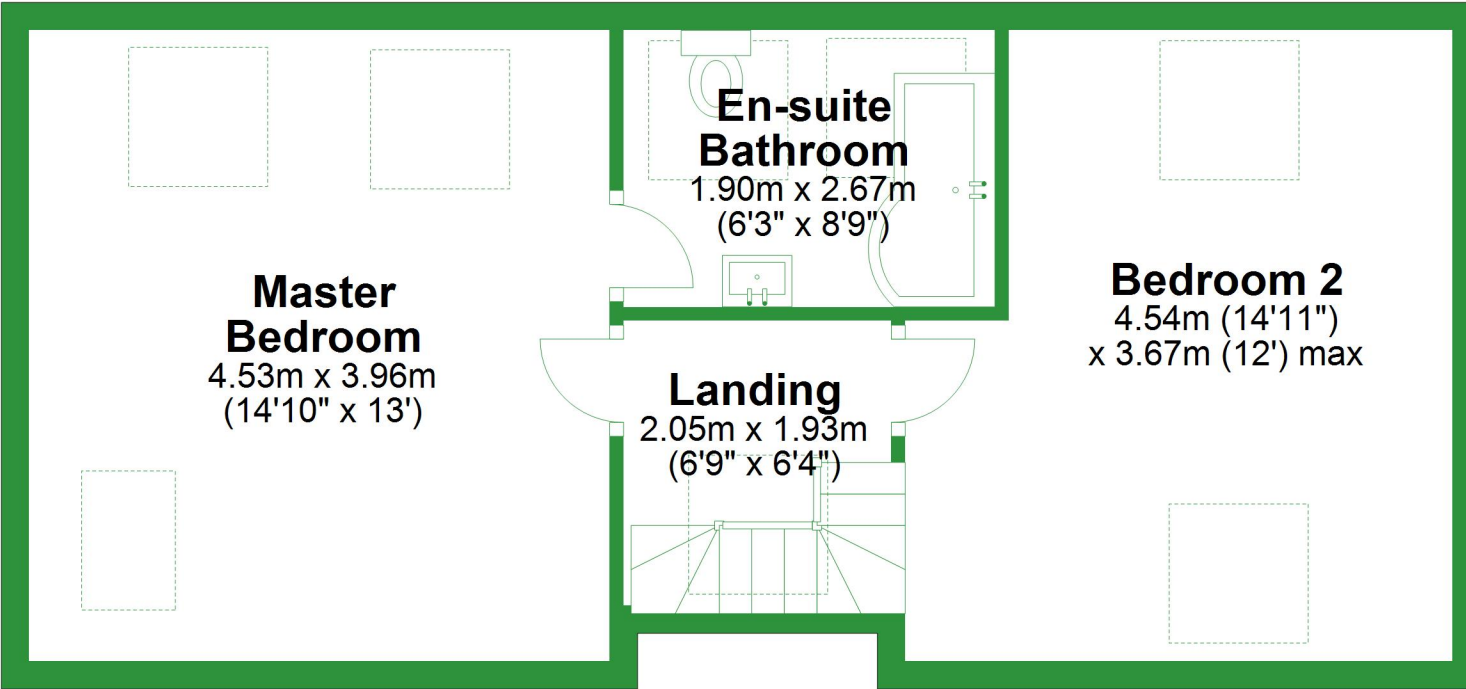
Total area: approx. 149.4 sq. metres (1607.9 sq. feet)

For illustrative purposes only. Not to scale. All sizes are approximate.

Plan produced using PlanUp.

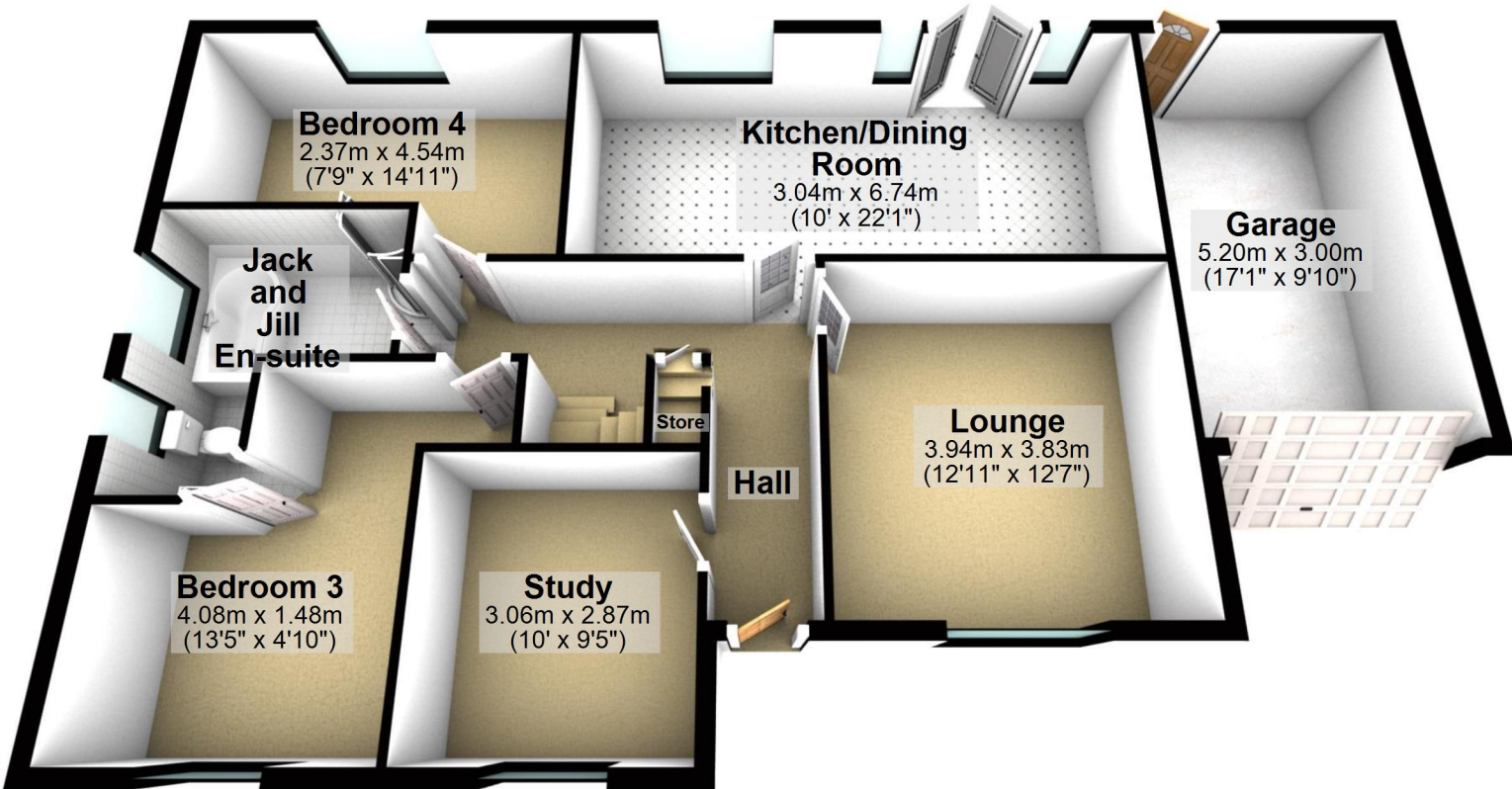
# First Floor

Approx. 44.4 sq. metres (477.4 sq. feet)



## Ground Floor

Approx. 105.0 sq. metres (1130.6 sq. feet)

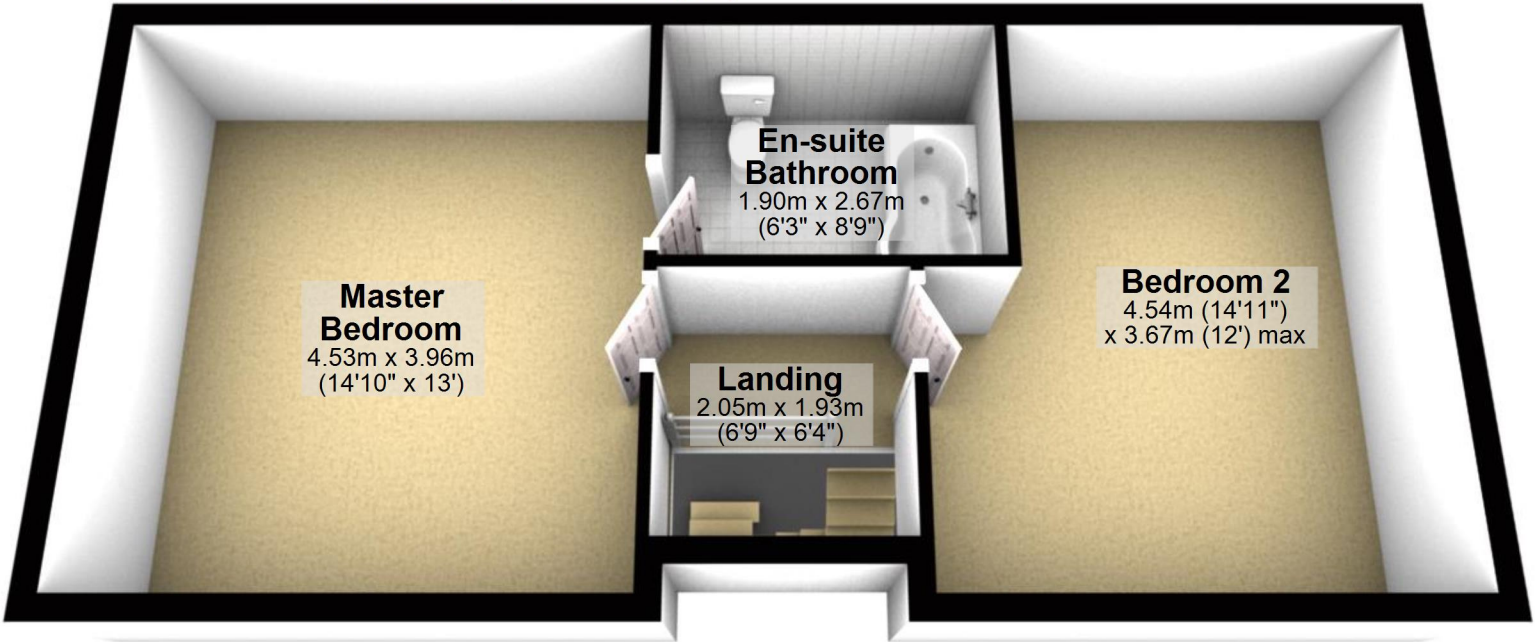


Total area: approx. 149.4 sq. metres (1607.9 sq. feet)

For illustrative purposes only. Not to scale. All sizes are approximate.  
Plan produced using PlanUp.

## First Floor

Approx. 44.4 sq. metres (477.4 sq. feet)



**Master  
Bedroom**  
4.53m x 3.96m  
(14'10" x 13')

**En-suite  
Bathroom**  
1.90m x 2.67m  
(6'3" x 8'9")

**Landing**  
2.05m x 1.93m  
(6'9" x 6'4")

**Bedroom 2**  
4.54m (14'11")  
x 3.67m (12') max