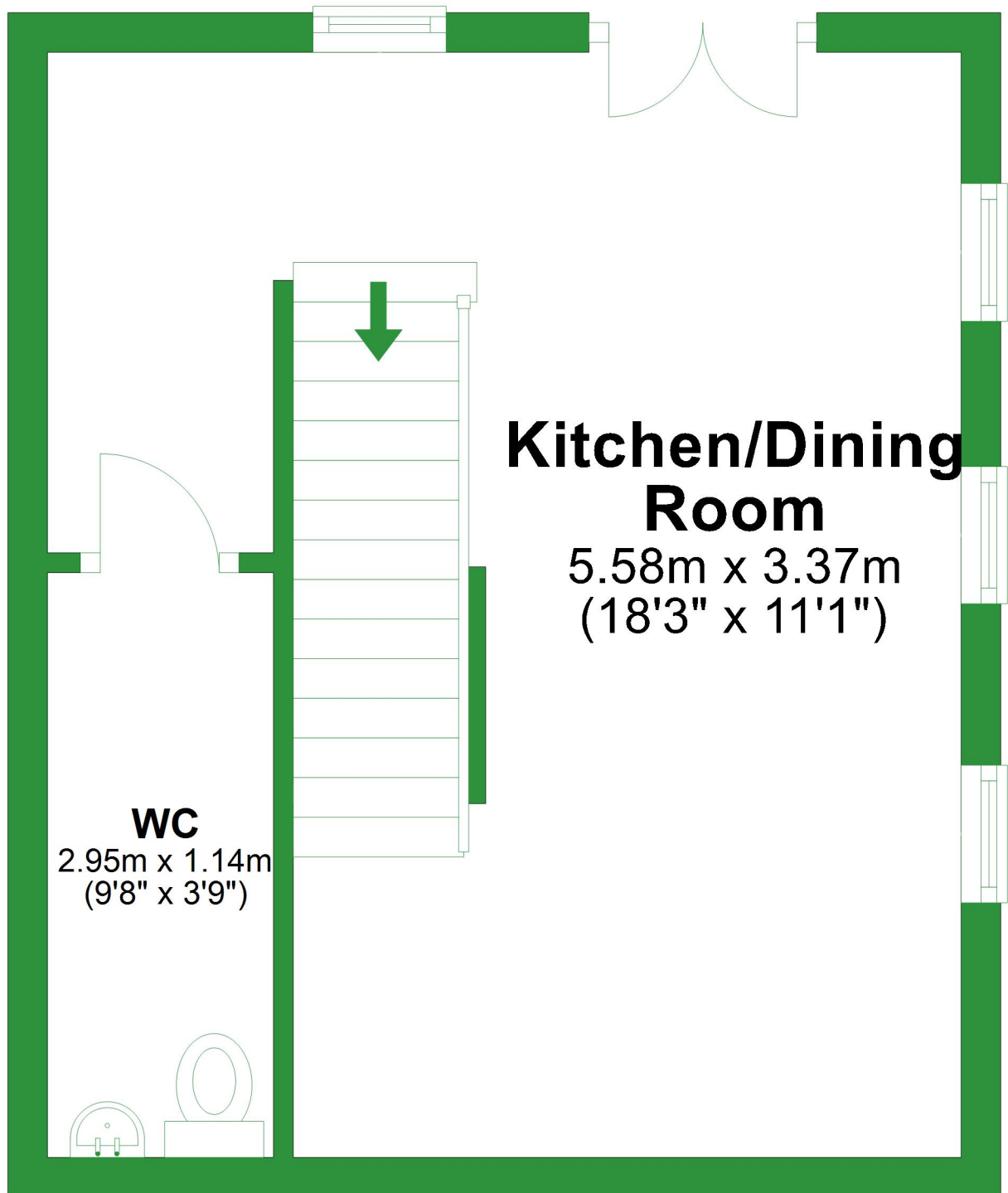


# Lower Ground Floor

Approx. 25.7 sq. metres (276.5 sq. feet)



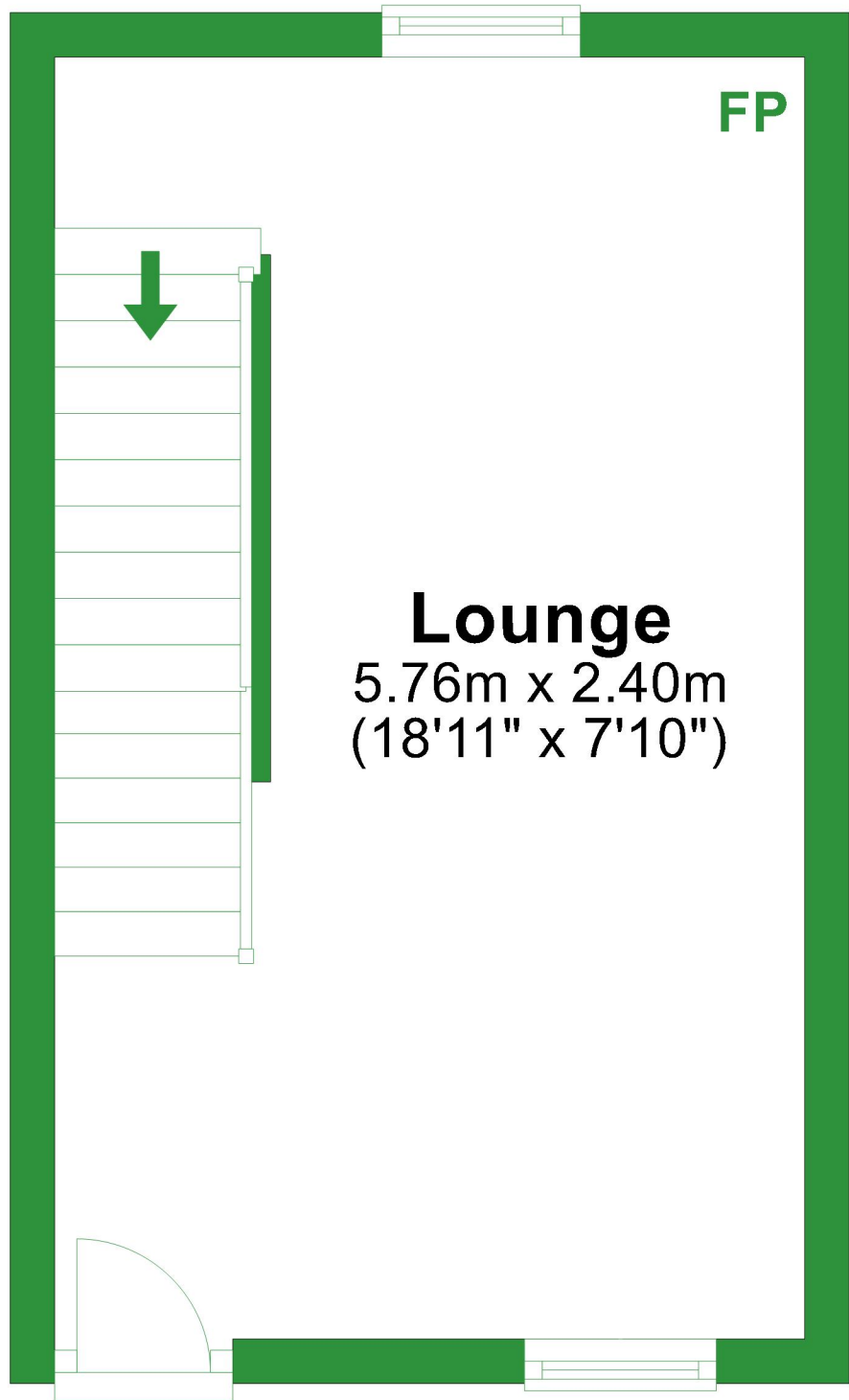
al area: approx. 64.8 sq. metres (697.7 sq. feet)

For illustrative purposes only. Not to scale. All sizes are approximate.

Plan produced using PlanUp.

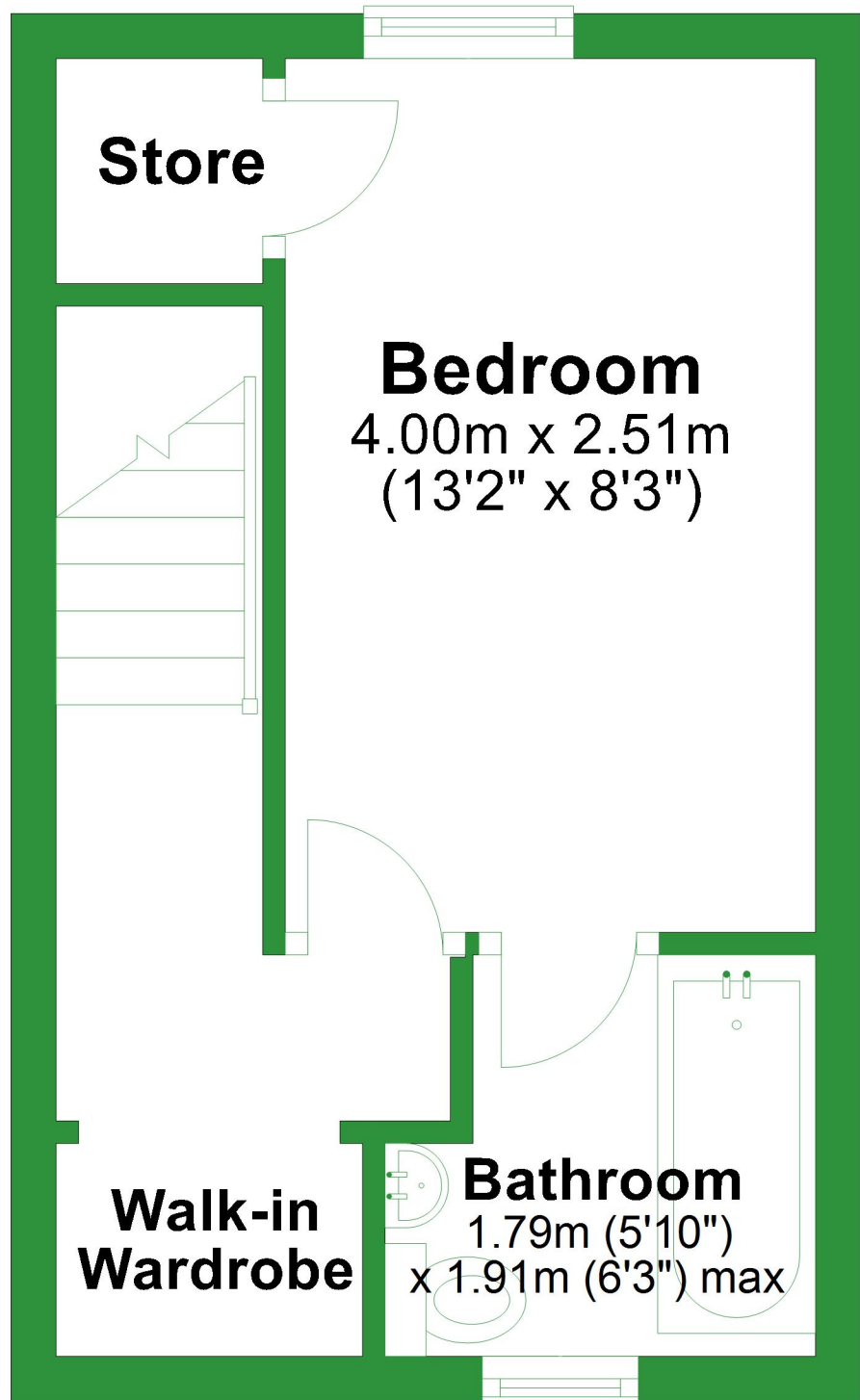
# Ground Floor

Approx. 19.4 sq. metres (208.9 sq. feet)



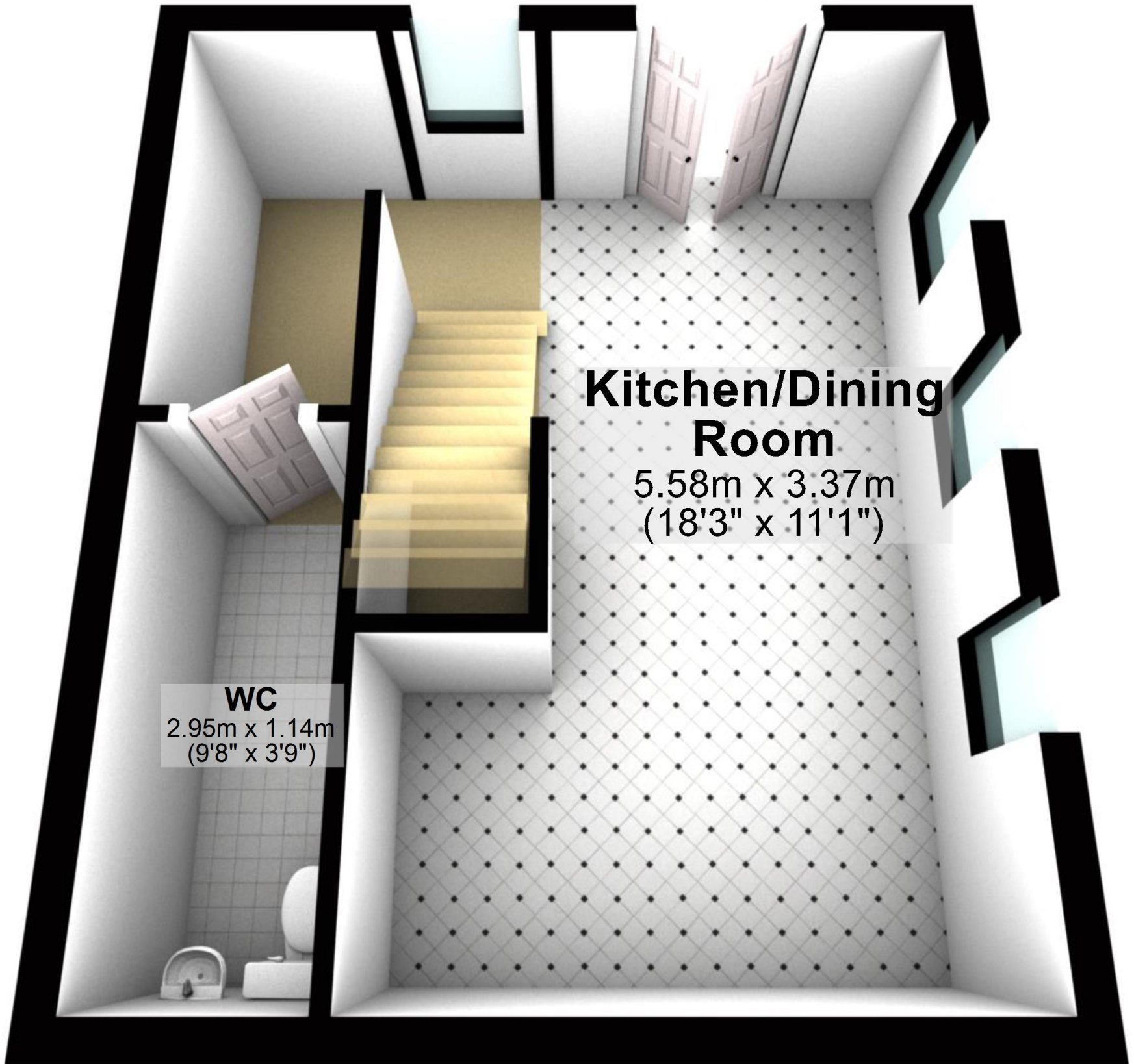
# First Floor

Approx. 19.7 sq. metres (212.2 sq. feet)



# Lower Ground Floor

Approx. 25.7 sq. metres (276.5 sq. feet)



## Kitchen/Dining Room

5.58m x 3.37m  
(18'3" x 11'1")

## WC

2.95m x 1.14m  
(9'8" x 3'9")

Total area: approx. 64.8 sq. metres (697.7 sq. feet)

For illustrative purposes only. Not to scale. All sizes are approximate.

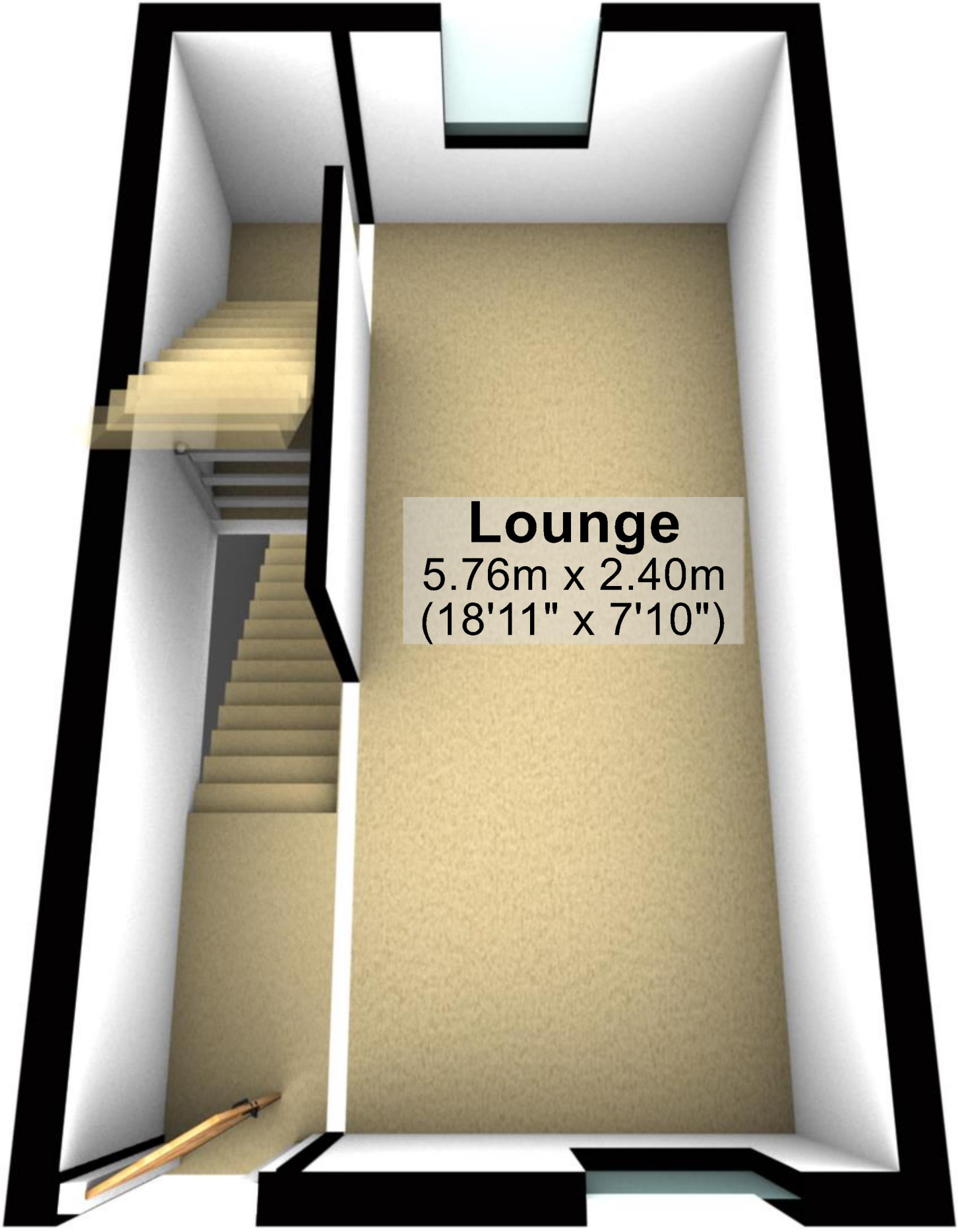
Plan produced using PlanUp.

# Ground Floor

Approx. 19.4 sq. metres (208.9 sq. feet)

## Lounge

5.76m x 2.40m  
(18'11" x 7'10")



# First Floor

Approx. 19.7 sq. metres (212.2 sq. feet)

**Store**

**Bedroom**

4.00m x 2.51m  
(13'2" x 8'3")

**Walk-in  
Wardrobe**

**Bathroom**

1.79m (5'10")  
x 1.91m (6'3") max

