

Basement

Approx. 15.7 sq. metres (168.5 sq. feet)



The floor plan shows a basement layout. A large rectangular area on the left is labeled 'Cellar'. To the right of the cellar is a staircase with a green arrow pointing upwards, indicating the direction of ascent. The walls are represented by a thick green line, and the staircase is shown with horizontal lines representing steps. A door is visible on the left wall of the cellar.

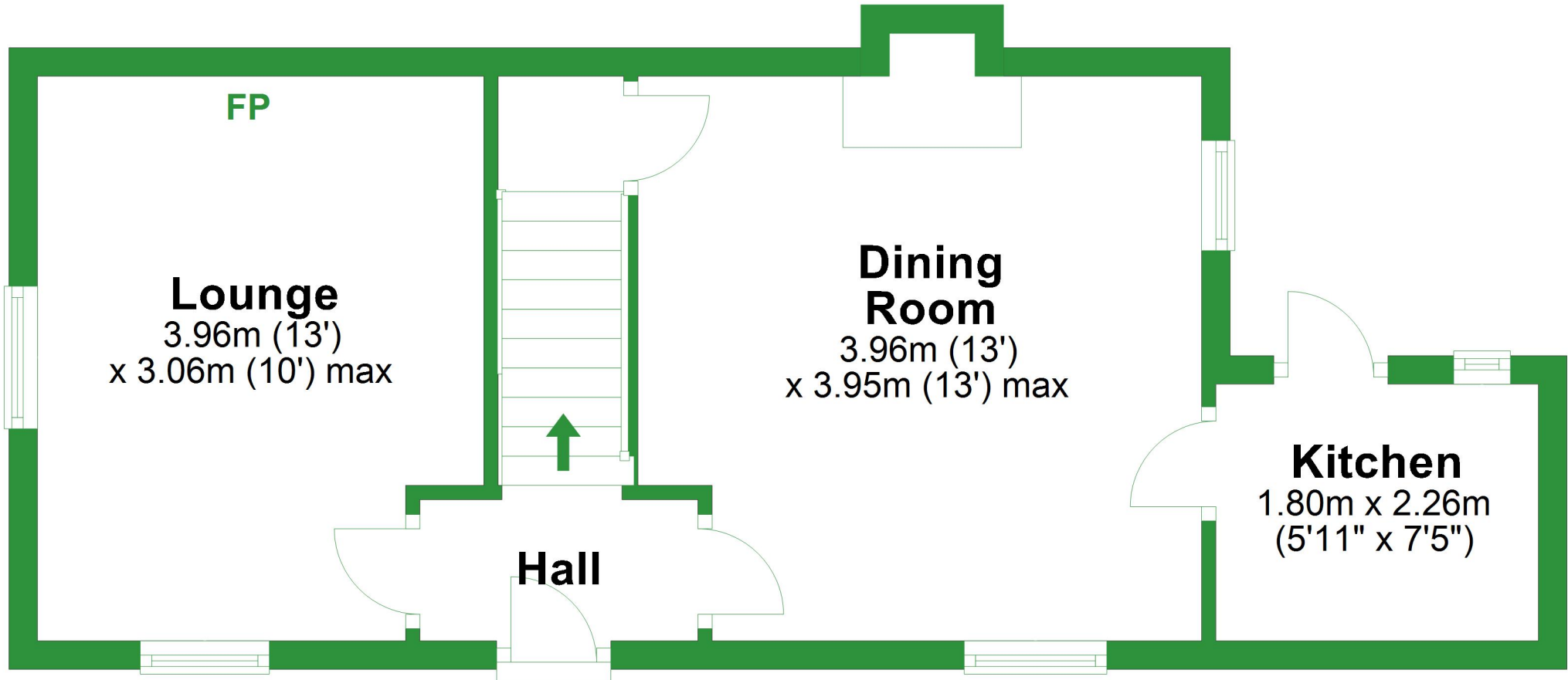
Cellar

Total area: approx. 88.6 sq. metres (953.3 sq. feet)

For illustrative purposes only. Not to scale. All sizes are approximate.
Plan produced using PlanUp.

Ground Floor

Approx. 36.4 sq. metres (391.4 sq. feet)



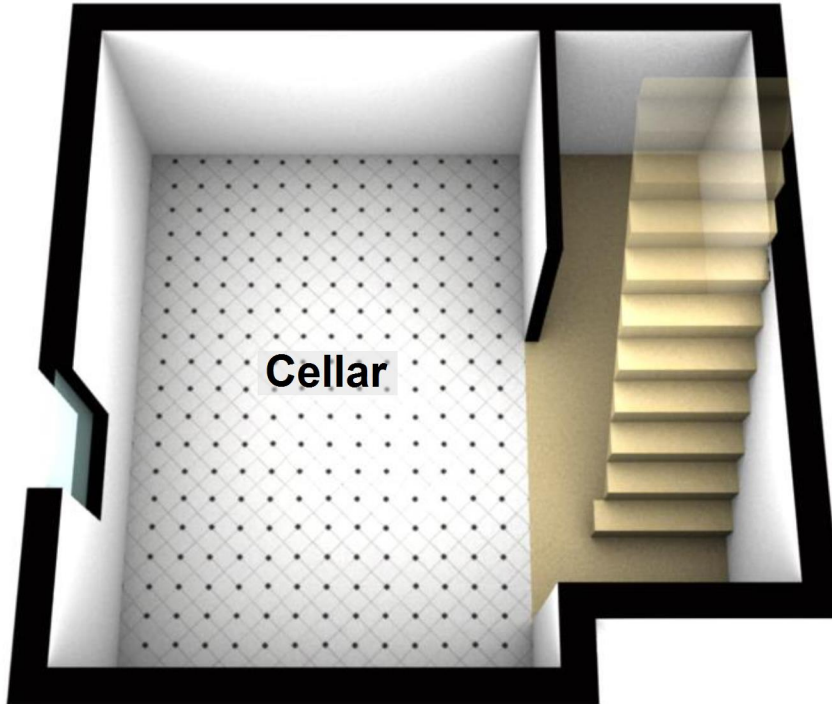
First Floor

Approx. 36.6 sq. metres (393.5 sq. feet)



Basement

Approx. 15.7 sq. metres (168.5 sq. feet)

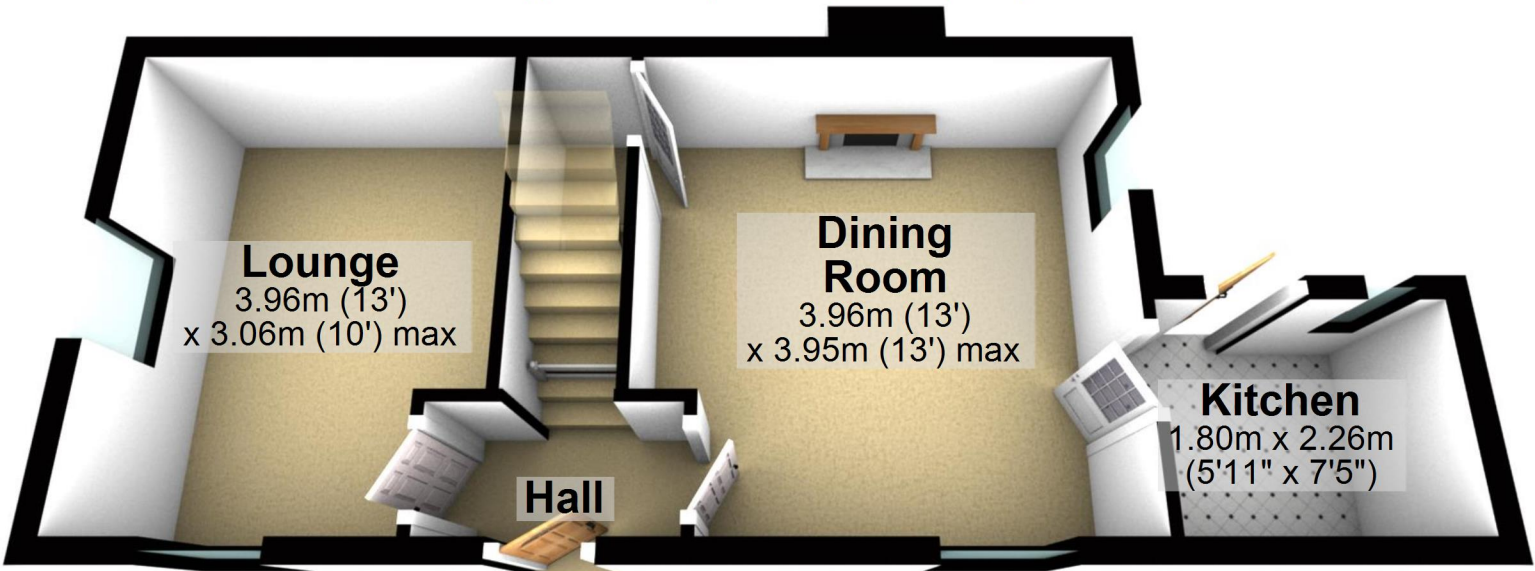


Total area: approx. 88.6 sq. metres (953.3 sq. feet)

For illustrative purposes only. Not to scale. All sizes are approximate.
Plan produced using PlanUp.

Ground Floor

Approx. 36.4 sq. metres (391.4 sq. feet)



Lounge
3.96m (13')
x 3.06m (10') max

Dining Room
3.96m (13')
x 3.95m (13') max

Kitchen
1.80m x 2.26m
(5'11" x 7'5")

Hall

First Floor

Approx. 36.6 sq. metres (393.5 sq. feet)

Bedroom 2
3.96m x 3.03m
(13' x 9'11")

Bedroom 1
3.96m x 3.95m
(13' x 13')

Store

Shower Room
1.77m x 2.26m
(5'10" x 7'5")

