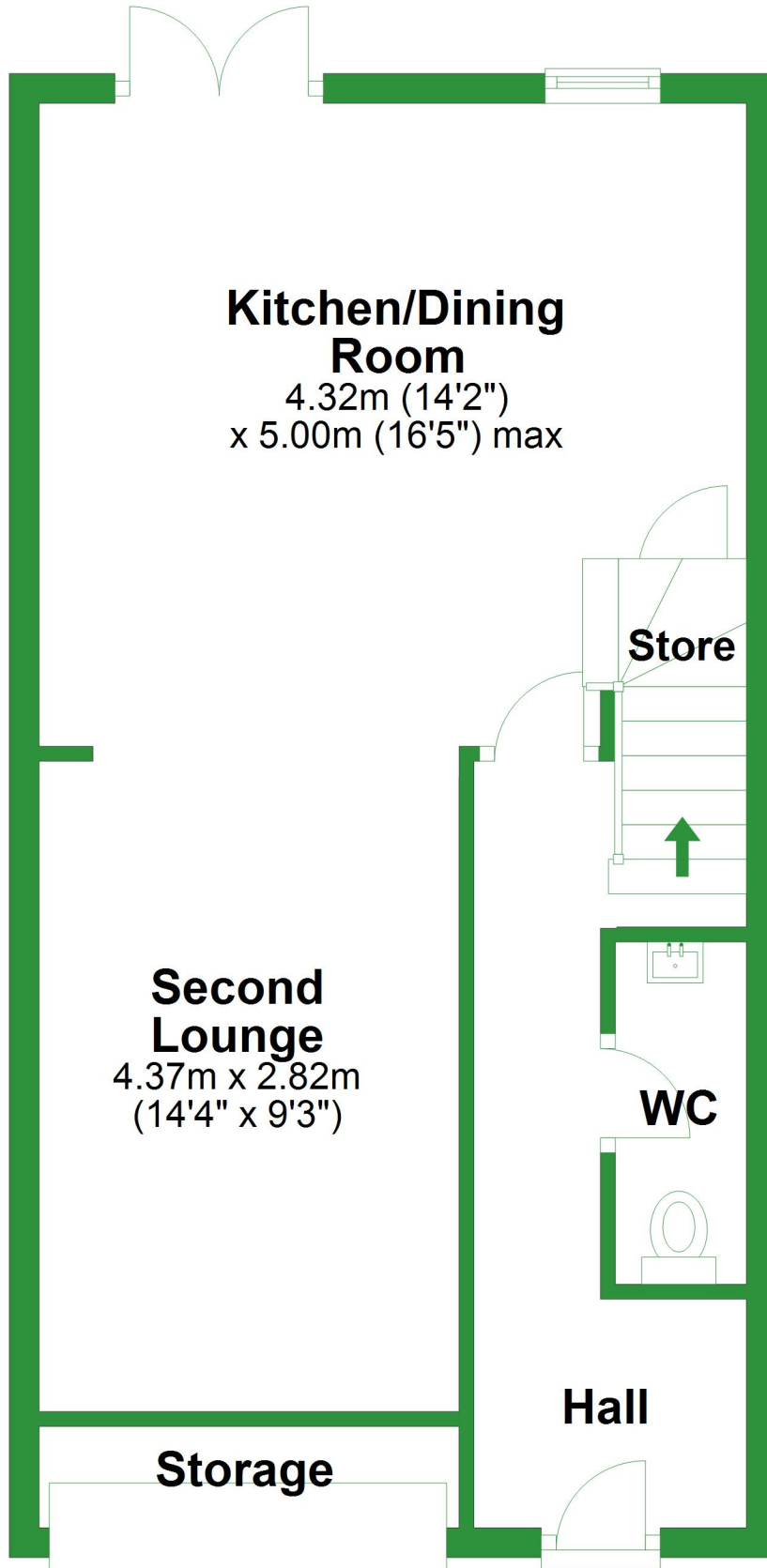


Ground Floor

Approx. 46.0 sq. metres (495.1 sq. feet)

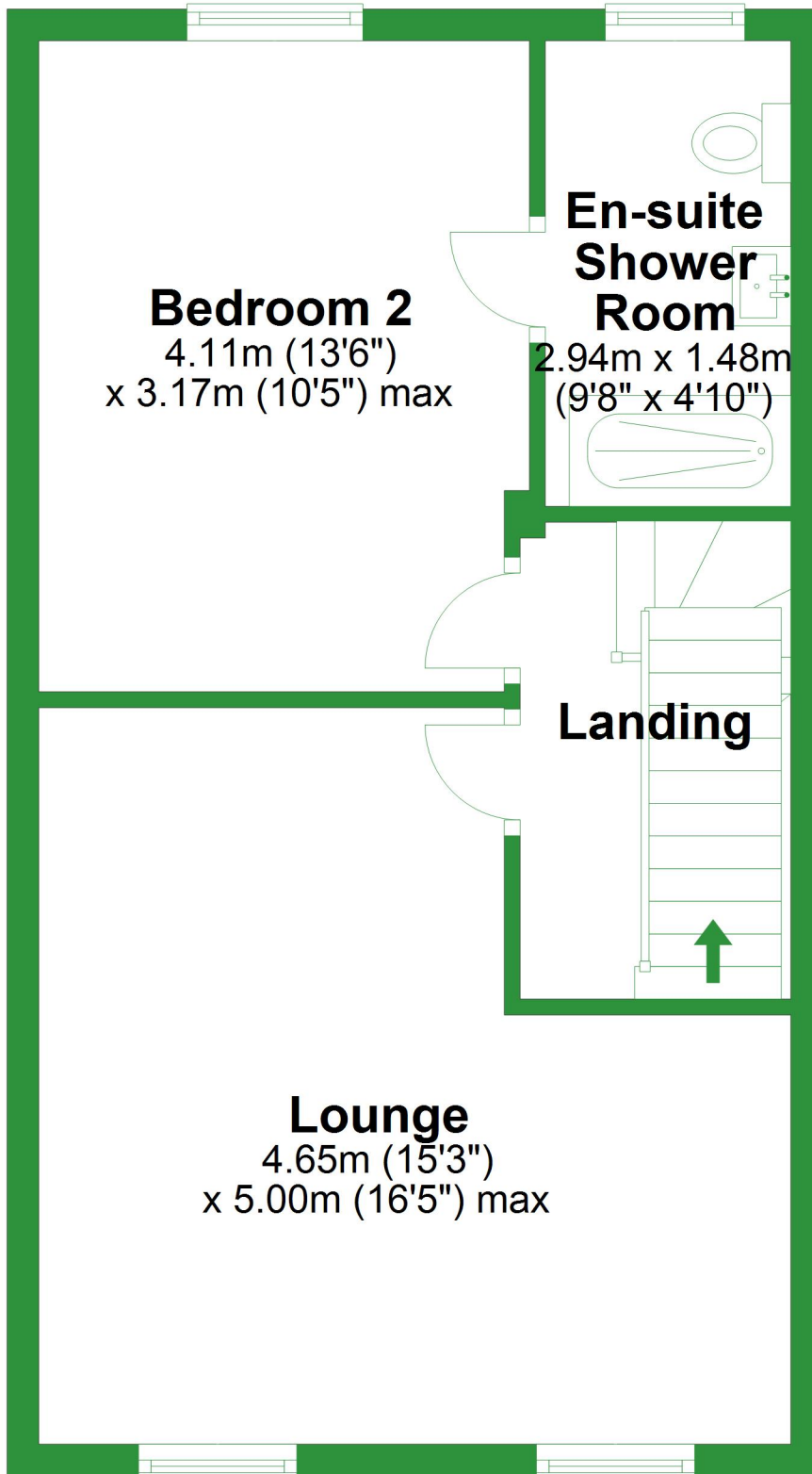


Total area: approx. 129.8 sq. metres (1396.6 sq. feet)

For illustrative purposes only. Not to scale. All sizes are approximate.
Plan produced using PlanUp.

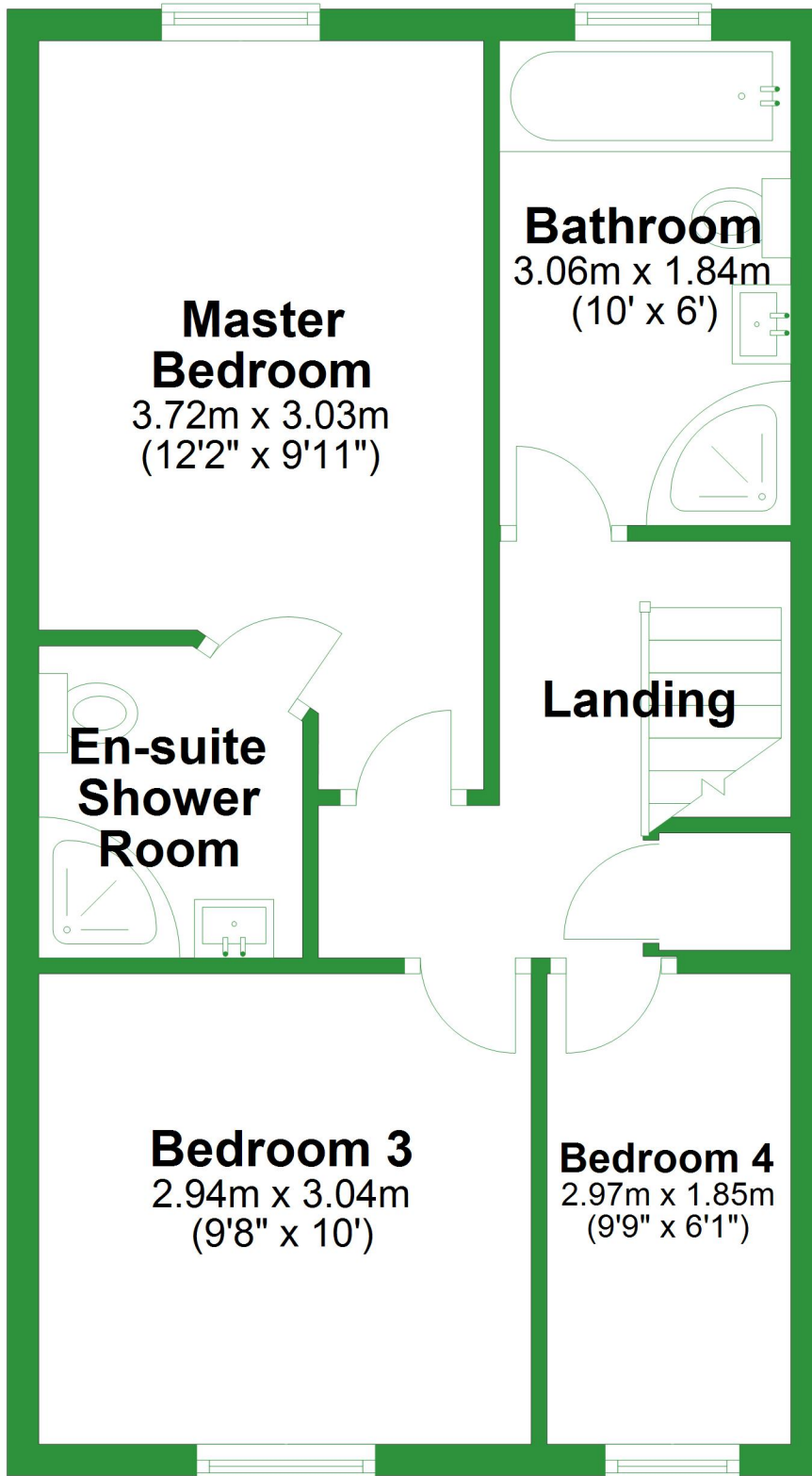
First Floor

Approx. 41.9 sq. metres (450.8 sq. feet)



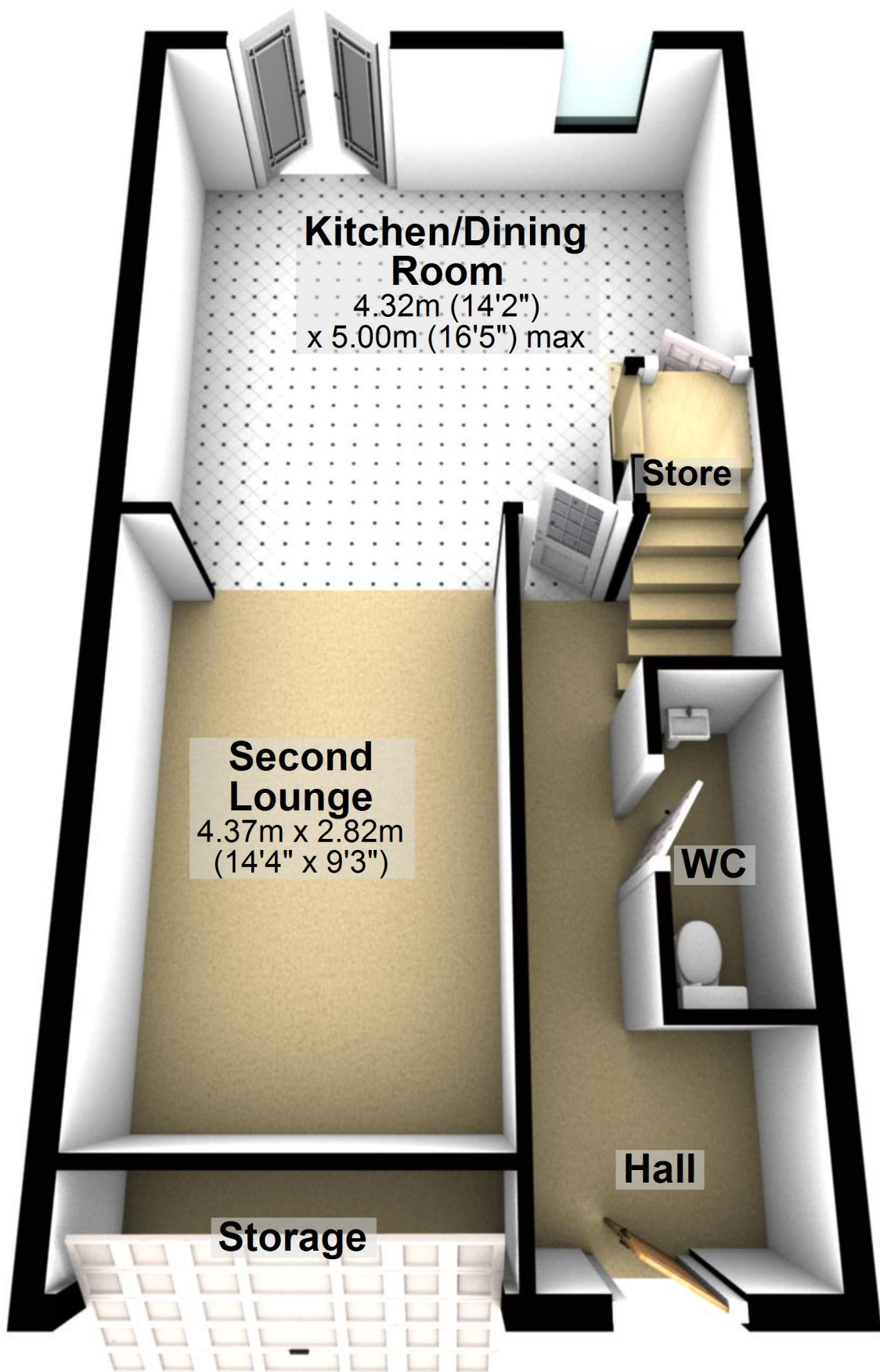
Second Floor

Approx. 41.9 sq. metres (450.8 sq. feet)



Ground Floor

Approx. 46.0 sq. metres (495.1 sq. feet)



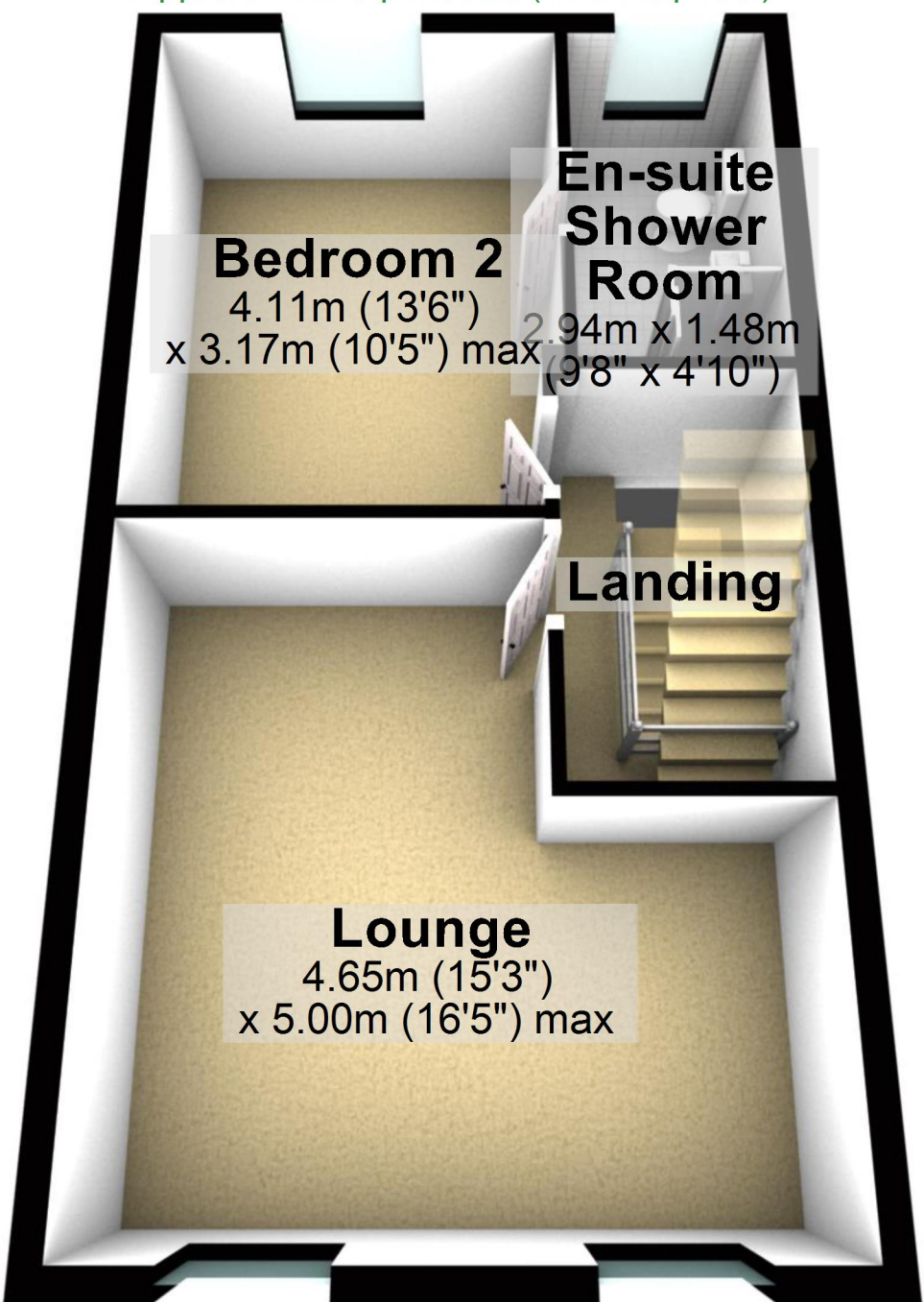
Total area: approx. 129.8 sq. metres (1396.6 sq. feet)

For illustrative purposes only. Not to scale. All sizes are approximate.

Plan produced using PlanUp.

First Floor

Approx. 41.9 sq. metres (450.8 sq. feet)



Bedroom 2

4.11m (13'6")
x 3.17m (10'5") max

En-suite Shower Room

2.94m x 1.48m
(9'8" x 4'10")

Landing

Lounge

4.65m (15'3")
x 5.00m (16'5") max

Second Floor

Approx. 41.9 sq. metres (450.8 sq. feet)

