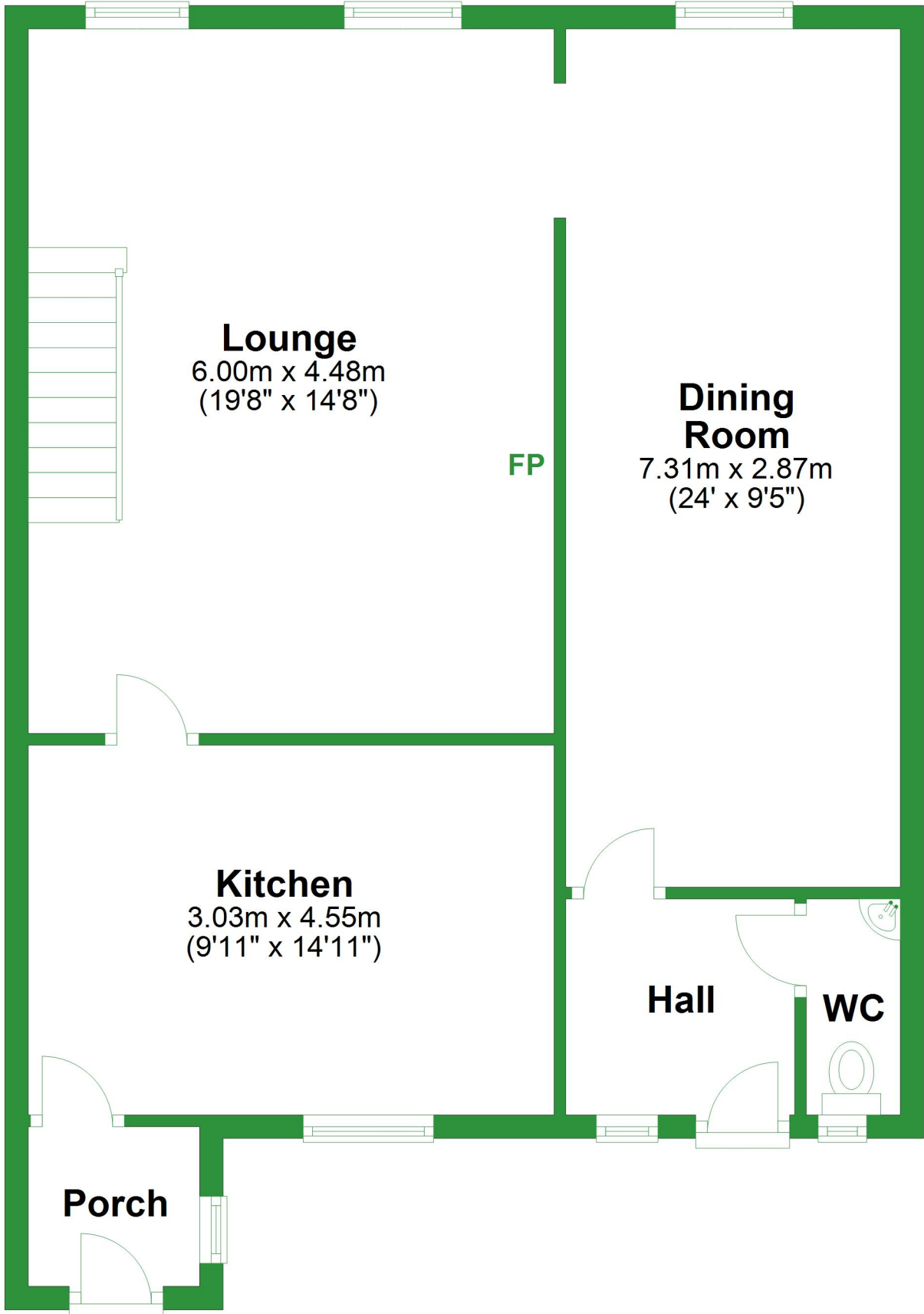


Ground Floor

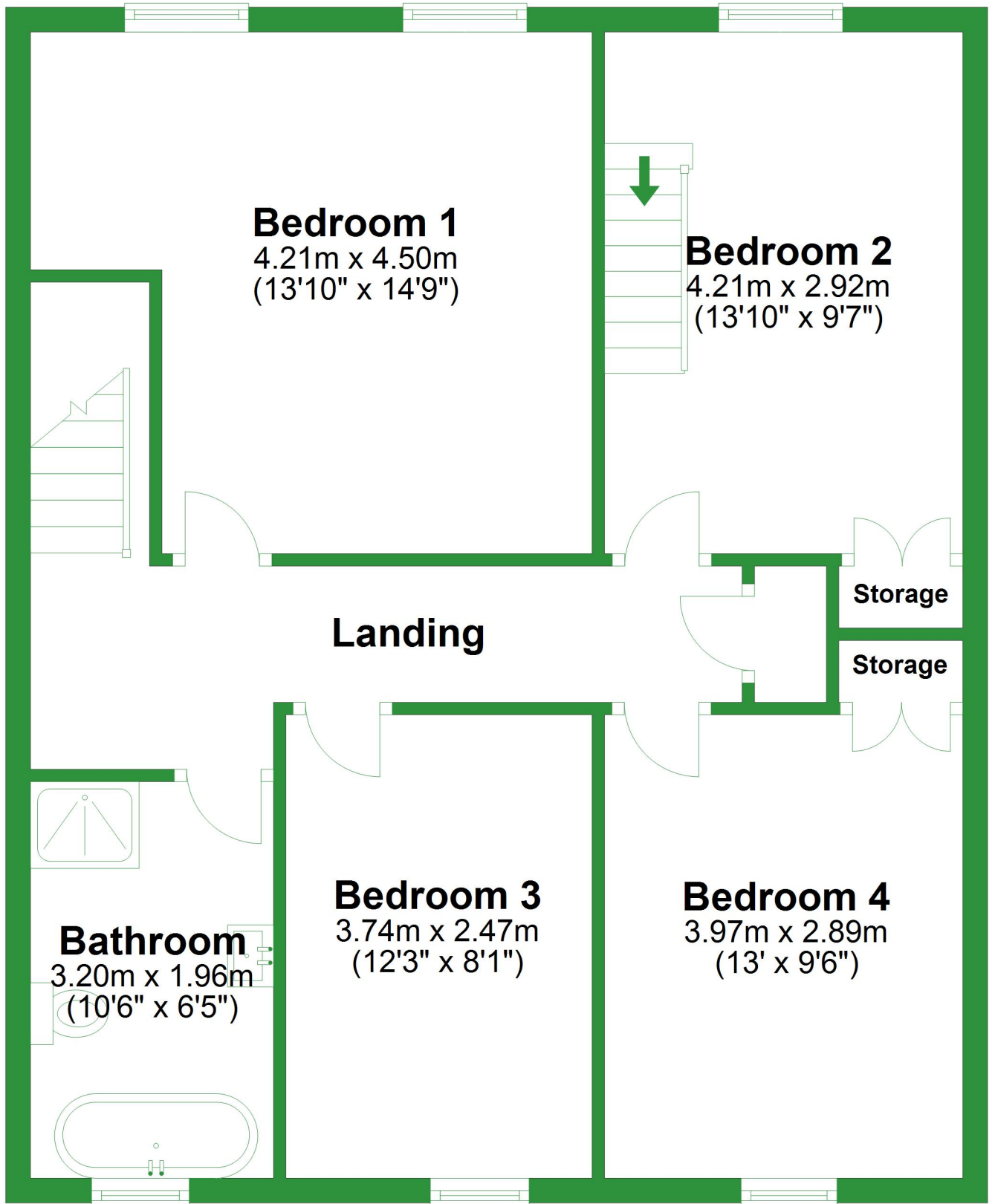
Approx. 70.9 sq. metres (762.7 sq. feet)



Total area: approx. 140.4 sq. metres (1511.5 sq. feet)

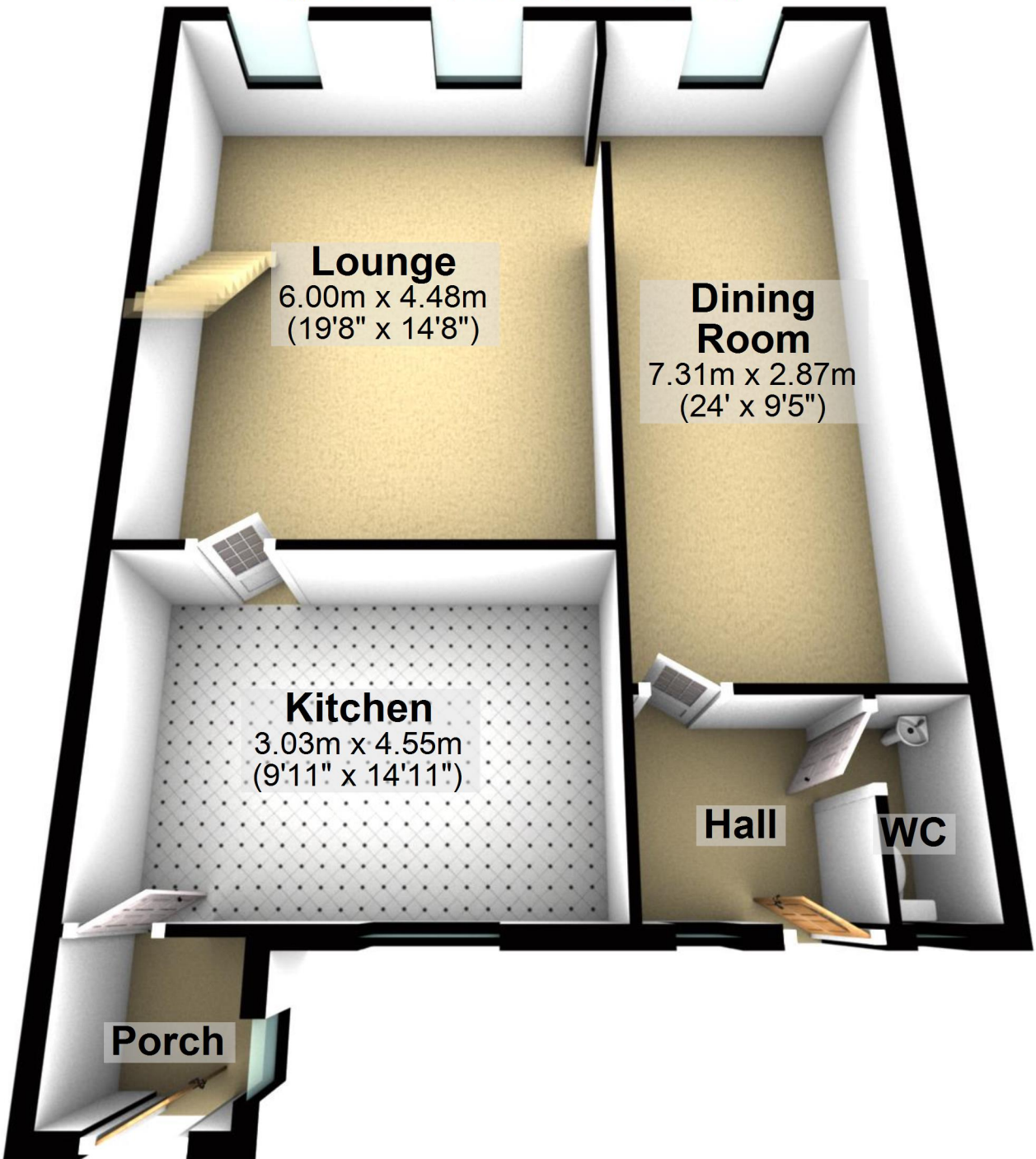
For illustrative purposes only. Not to scale. All sizes are approximate.
Plan produced using PlanUp.

Approx. 69.6 sq. metres (748.7 sq. feet)



Ground Floor

Approx. 70.9 sq. metres (762.7 sq. feet)



Porch

Lounge

6.00m x 4.48m
(19'8" x 14'8")

Dining Room

7.31m x 2.87m
(24' x 9'5")

Kitchen

3.03m x 4.55m
(9'11" x 14'11")

Hall

WC

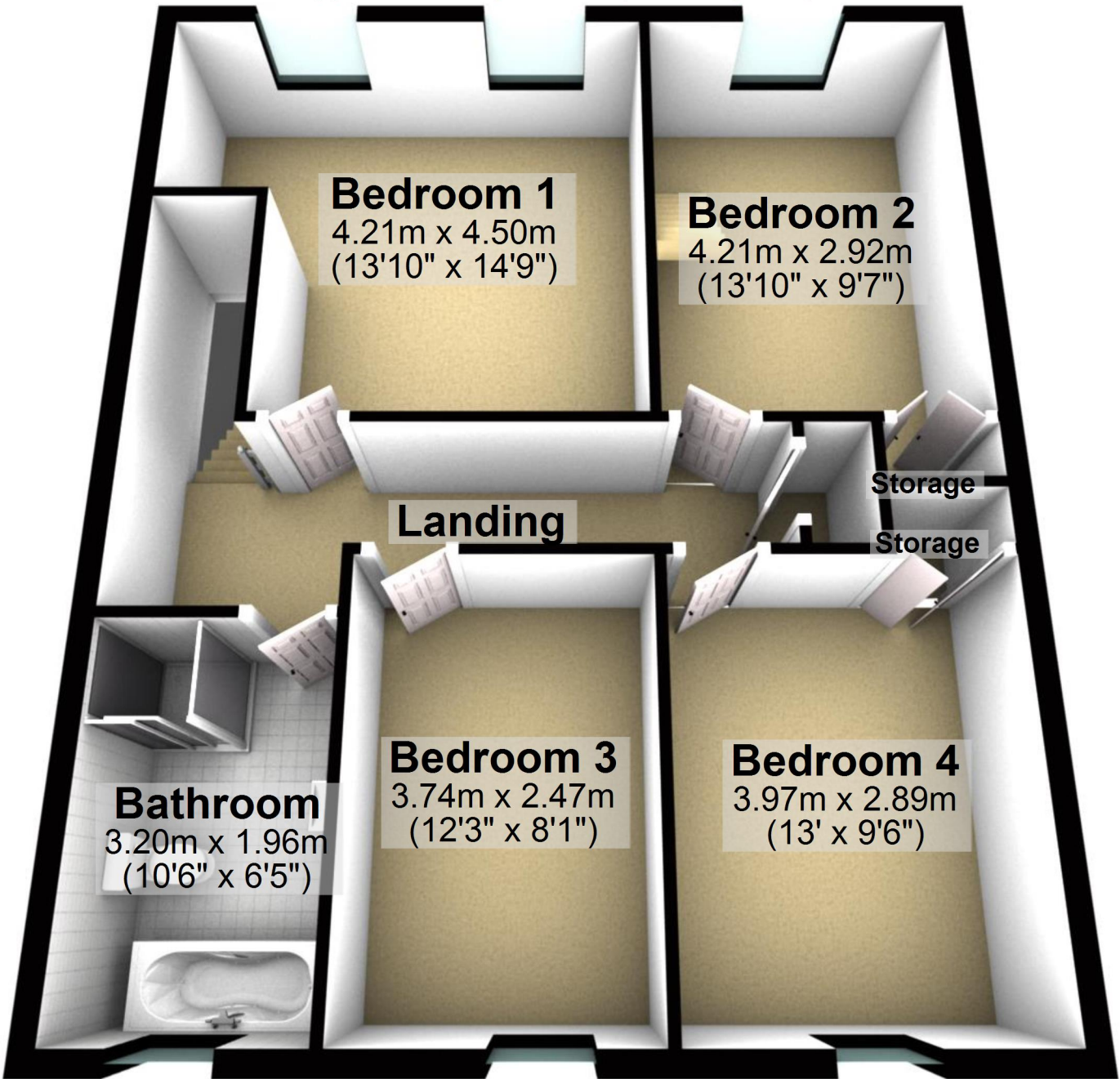
Total area: approx. 140.4 sq. metres (1511.5 sq. feet)

For illustrative purposes only. Not to scale. All sizes are approximate.

Plan produced using PlanUp.

First Floor

Approx. 69.6 sq. metres (748.7 sq. feet)



Bedroom 1

4.21m x 4.50m
(13'10" x 14'9")

Bedroom 2

4.21m x 2.92m
(13'10" x 9'7")

Landing

Storage

Storage

Bathroom

3.20m x 1.96m
(10'6" x 6'5")

Bedroom 3

3.74m x 2.47m
(12'3" x 8'1")

Bedroom 4

3.97m x 2.89m
(13' x 9'6")